

ARG45518 anti-CPSF6 antibody [3F11E1]

Package: 50 µg
Store at: -20°C

Summary

Product Description	Mouse Monoclonal antibody [3F11E1] recognizes CPSF6
Tested Reactivity	Hu, Ms, Rat, Mk
Tested Application	FACS, ICC/IF, IHC-P, WB
Host	Mouse
Clonality	Monoclonal
Clone	3F11E1
Isotype	IgG1
Target Name	CPSF6
Species	Human
Immunogen	Recombinant protein containing to human CPSF6.
Conjugation	Un-conjugated
Alternate Names	CPSF6; Cleavage And Polyadenylation Specific Factor 6; CFIM68; Cleavage Factor Im Complex 68 KDa Subunit; HPBR11-4; HPBR11-7; CFIM72; CFIM; Cleavage And Polyadenylation Specificity Factor 68 KDa Subunit; Cleavage And Polyadenylation Specificity Factor Subunit 6; Cleavage And Polyadenylation Specific Factor 6, 68kDa; Pre-mRNA Cleavage Factor Im 68 KDa Subunit; CPSF 68 KDa Subunit; Protein HPBR11-4/7; Cleavage And Polyadenylation Specific Factor 6, 68kD Subunit; Pre-mRNA Cleavage Factor I, 68kD Subunit; Pre-mRNA Cleavage Factor Im (68kD); CFIm68

Application Instructions

Application table	Application	Dilution
	FACS	1 - 3 µg/10 ⁶ cells
	ICC/IF	5 µg/ml
	IHC-P	2-5 µg/ml
	WB	0.25-0.5 µg/ml
Application Note	* The dilutions indicate recommended starting dilutions and the optimal dilutions or concentrations should be determined by the scientist.	
Observed Size	68 kDa	

Properties

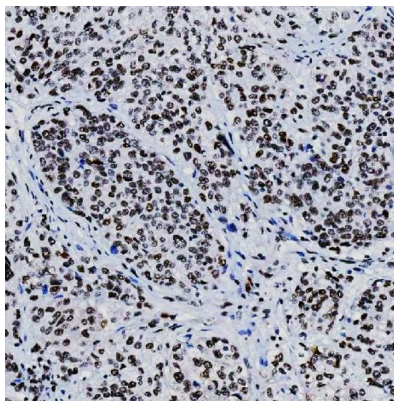
Form	Liquid
Purification	Affinity purified
Buffer	0.2% Na ₂ HPO ₄ , 0.9% NaCl and 4% Trehalose.
Stabilizer	4% Trehalose

Concentration	0.5 mg/ml
Storage instruction	For continuous use, store undiluted antibody at 2-8°C for up to a week. For long-term storage, aliquot and store at -20°C or below. Storage in frost free freezers is not recommended. Avoid repeated freeze/thaw cycles. Suggest spin the vial prior to opening. The antibody solution should be gently mixed before use.
Note	For laboratory research only, not for drug, diagnostic or other use.

Bioinformation

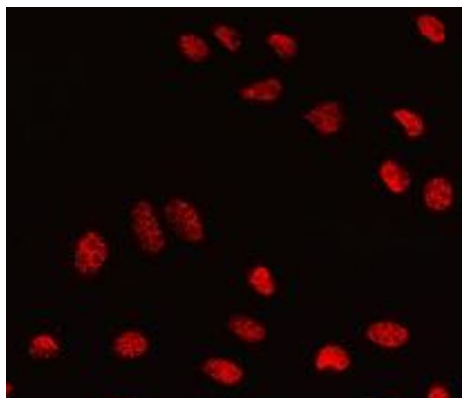
Gene Symbol	CPSF6
Gene Full Name	Cleavage And Polyadenylation Specific Factor 6
Background	The protein encoded by this gene is one subunit of a cleavage factor required for 3' RNA cleavage and polyadenylation processing. The interaction of the protein with the RNA is one of the earliest steps in the assembly of the 3' end processing complex and facilitates the recruitment of other processing factors. The cleavage factor complex is composed of four polypeptides. This gene encodes the 68kD subunit. It has a domain organization reminiscent of spliceosomal proteins. [provided by RefSeq, Jul 2008]
Function	Component of the cleavage factor Im (CFIm) complex that functions as an activator of the pre-mRNA 3'-end cleavage and polyadenylation processing required for the maturation of pre-mRNA into functional mRNA. [UniProt]
Calculated Mw	59 kDa
PTM	Methylation; Phosphoprotein. [UniProt]
Cellular Localization	Cytoplasm; Nucleus. [UniProt]

Images



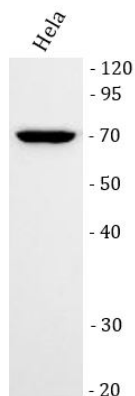
ARG45518 anti-CPSF6 antibody [3F11E1] IHC-P image

Immunohistochemistry: Human squamous cell carcinoma stained with ARG45518 anti-CPSF6 antibody [3F11E1] at 2 µg/ml dilution.



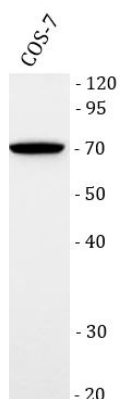
ARG45518 anti-CPSF6 antibody [3F11E1] ICC/IF image

Immunofluorescence: U2OS stained with ARG45518 anti-CPSF6 antibody [3F11E1] at 5 µg/ml dilution.



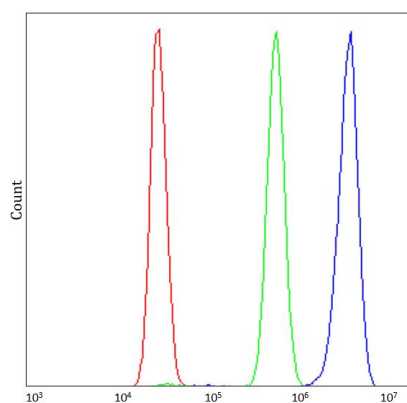
ARG45518 anti-CPSF6 antibody [3F11E1] WB image

Western blot: HeLa stained with ARG45518 anti-CPSF6 antibody [3F11E1] at 0.5 $\mu\text{g/ml}$ dilution.



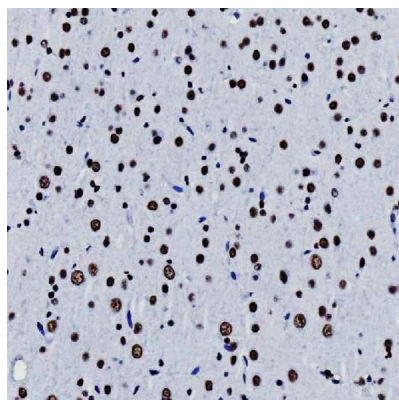
ARG45518 anti-CPSF6 antibody [3F11E1] WB image

Western blot: COS-7 stained with ARG45518 anti-CPSF6 antibody [3F11E1] at 0.5 $\mu\text{g/ml}$ dilution.



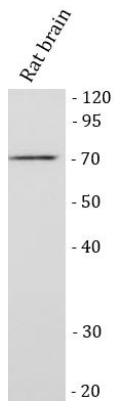
ARG45518 anti-CPSF6 antibody [3F11E1] FACS image

Flow Cytometry: HepG2 stained with ARG45518 anti-CPSF6 antibody [3F11E1] at 1 $\mu\text{g}/10^6$ cells dilution.



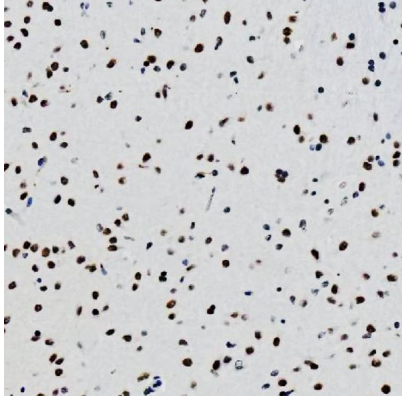
ARG45518 anti-CPSF6 antibody [3F11E1] IHC-P image

Immunohistochemistry: Rat brain stained with ARG45518 anti-CPSF6 antibody [3F11E1] at 2 $\mu\text{g/ml}$ dilution.



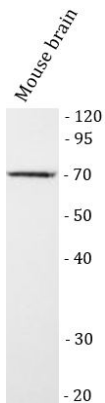
ARG45518 anti-CPSF6 antibody [3F11E1] WB image

Western blot: Rat brain stained with ARG45518 anti-CPSF6 antibody [3F11E1] at 0.5 $\mu\text{g}/\text{ml}$ dilution.



ARG45518 anti-CPSF6 antibody [3F11E1] IHC-P image

Immunohistochemistry: Mouse brain stained with ARG45518 anti-CPSF6 antibody [3F11E1] at 2 $\mu\text{g}/\text{ml}$ dilution.



ARG45518 anti-CPSF6 antibody [3F11E1] WB image

Western blot: Mouse brain stained with ARG45518 anti-CPSF6 antibody [3F11E1] at 0.5 $\mu\text{g}/\text{ml}$ dilution.