

## ARG45524 anti-Serine racemase antibody

Package: 50 µg  
Store at: -20°C

### Summary

Product Description	Rabbit Polyclonal antibody recognizes Serine racemase
Tested Reactivity	Hu, Ms, Rat
Tested Application	FACS, ICC/IF, IHC-P, IP, WB
Host	Rabbit
Clonality	Polyclonal
Isotype	IgG
Target Name	Serine racemase
Species	Human
Immunogen	Recombinant protein containing to human Serine racemase.
Conjugation	Un-conjugated
Alternate Names	SRR; Serine Racemase; ILV1; ISO1; D-Serine Ammonia-Lyase; L-Serine Ammonia-Lyase; D-Serine Dehydratase; L-Serine Dehydratase; EC 5.1.1.18; EC 4.3.1.18; EC 4.3.1.17

### Application Instructions

Application table	Application	Dilution
	FACS	1 - 3 µg/10 <sup>6</sup> cells
	ICC/IF	5 µg/ml
	IHC-P	2-5 µg/ml
	IP	0.5-2 µg/ml
	WB	0.25-0.5 µg/ml
Application Note	* The dilutions indicate recommended starting dilutions and the optimal dilutions or concentrations should be determined by the scientist.	
Observed Size	37 kDa	

### Properties

Form	Liquid
Purification	Affinity purified
Buffer	0.2% Na <sub>2</sub> HPO <sub>4</sub> , 0.9% NaCl and 4% Trehalose.
Stabilizer	4% Trehalose
Concentration	0.5 mg/ml
Storage instruction	For continuous use, store undiluted antibody at 2-8°C for up to a week. For long-term storage, aliquot and store at -20°C or below. Storage in frost free freezers is not recommended. Avoid repeated

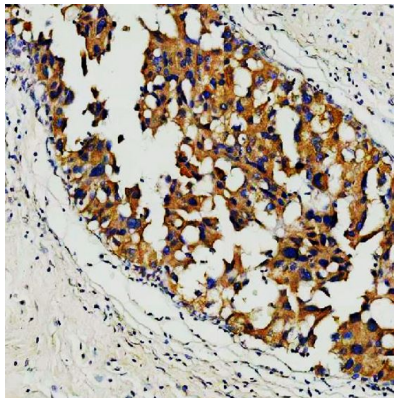
freeze/thaw cycles. Suggest spin the vial prior to opening. The antibody solution should be gently mixed before use.

**Note** For laboratory research only, not for drug, diagnostic or other use.

## Bioinformation

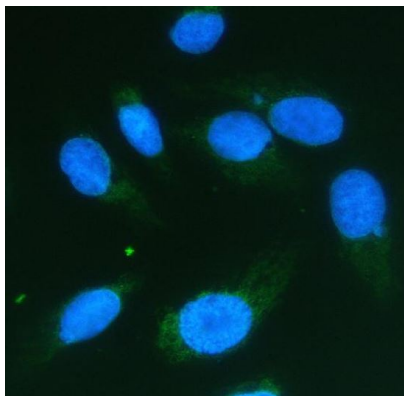
Gene Symbol	SRR
Gene Full Name	Serine Racemase
Background	Enables several functions, including L-serine ammonia-lyase activity; PDZ domain binding activity; and heterocyclic compound binding activity. Involved in carboxylic acid metabolic process and response to lipopolysaccharide. Located in cytoplasm and neuronal cell body. [provided by Alliance of Genome Resources, Feb 2025]
Function	Catalyzes the synthesis of D-serine from L-serine. [UniProt]
Calculated Mw	37 kDa
PTM	S-nitrosylation. [UniProt]
Cellular Localization	Cytoplasm; Cytosol; Cytoskeleton. [UniProt]

## Images



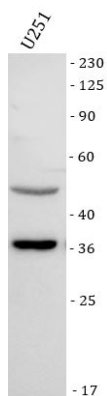
ARG45524 anti-Serine racemase antibody IHC-P image

Immunohistochemistry: Human breast cancer stained with ARG45524 anti-Serine racemase antibody at 2 µg/ml dilution.



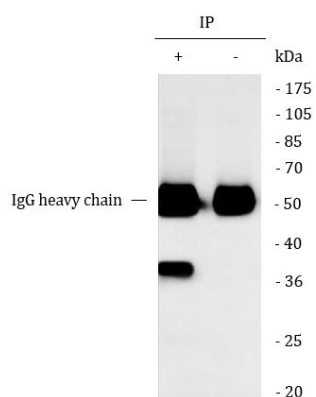
ARG45524 anti-Serine racemase antibody ICC/IF image

Immunofluorescence: U2OS stained with ARG45524 anti-Serine racemase antibody at 5 µg/ml dilution.



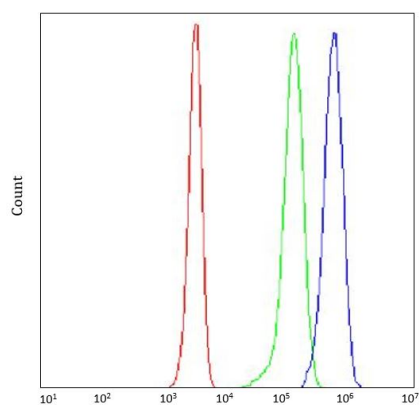
ARG45524 anti-Serine racemase antibody WB image

Western blot: U251 stained with ARG45524 anti-Serine racemase antibody at 0.5 µg/ml dilution.



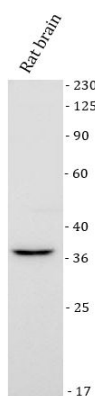
ARG45524 anti-Serine racemase antibody IP image

Immunoprecipitation: SH-SY5Y lysate immunoprecipitated with 2 µg ARG45524 anti-Serine racemase antibody.



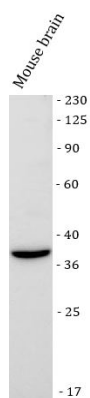
ARG45524 anti-Serine racemase antibody FACS image

Flow Cytometry: Jurkat stained with ARG45524 anti-Serine racemase antibody at 1 µg/10<sup>6</sup> cells dilution.



ARG45524 anti-Serine racemase antibody WB image

Western blot: Rat brain stained with ARG45524 anti-Serine racemase antibody at 0.5 µg/ml dilution.



#### ARG45524 anti-Serine racemase antibody WB image

Western blot: Mouse brain stained with ARG45524 anti-Serine racemase antibody at 0.5 µg/ml dilution.