

ARG45547 anti-SEZ6L antibody

Package: 50 µg
Store at: -20°C

Summary

Product Description	Rabbit Polyclonal antibody recognizes SEZ6L
Tested Reactivity	Hu, Ms, Rat
Tested Application	FACS, ICC/IF, WB
Host	Rabbit
Clonality	Polyclonal
Isotype	IgG
Target Name	SEZ6L
Species	Human
Immunogen	Recombinant protein containing to human SEZ6L.
Conjugation	Un-conjugated
Alternate Names	SEZ6L; seizure related 6 homolog (mouse)-like; Seizure 6-like protein

Application Instructions

Application table	Application	Dilution
	FACS	1 - 3 µg/10 ⁶ cells
	ICC/IF	5 µg/ml
	WB	0.25-0.5 µg/ml
Application Note	* The dilutions indicate recommended starting dilutions and the optimal dilutions or concentrations should be determined by the scientist.	
Observed Size	112 kDa	

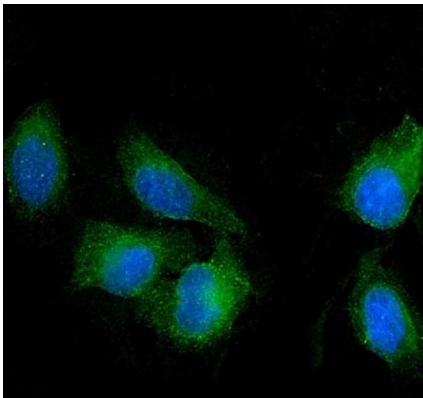
Properties

Form	Liquid
Purification	Affinity purified
Buffer	0.2% Na ₂ HPO ₄ , 0.9% NaCl and 4% Trehalose.
Stabilizer	4% Trehalose
Concentration	0.5 mg/ml
Storage instruction	For continuous use, store undiluted antibody at 2-8°C for up to a week. For long-term storage, aliquot and store at -20°C or below. Storage in frost free freezers is not recommended. Avoid repeated freeze/thaw cycles. Suggest spin the vial prior to opening. The antibody solution should be gently mixed before use.
Note	For laboratory research only, not for drug, diagnostic or other use.

Bioinformation

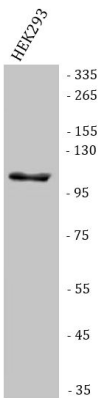
Gene Symbol	SEZ6L
Gene Full Name	seizure related 6 homolog (mouse)-like
Background	Predicted to be involved in regulation of protein kinase C signaling and synapse maturation. Predicted to act upstream of or within activation of protein kinase C activity; adult locomotory behavior; and cerebellar Purkinje cell layer development. Predicted to be located in endoplasmic reticulum membrane. Predicted to be active in several cellular components, including glutamatergic synapse; neuronal cell body; and postsynaptic membrane. [provided by Alliance of Genome Resources, Feb 2025]
Function	May contribute to specialized endoplasmic reticulum functions in neurons. [UniProt]
Calculated Mw	112 kDa
PTM	O-glycosylated. [UniProt]
Cellular Localization	Endoplasmic reticulum membrane; Single-pass type I membrane protein. [UniProt]

Images



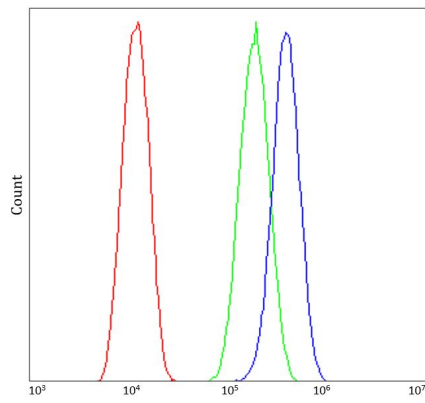
ARG45547 anti-SEZ6L antibody ICC/IF image

Immunofluorescence: U2OS stained with ARG45547 anti-SEZ6L antibody at 5 µg/ml dilution.



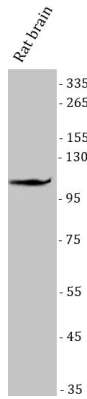
ARG45547 anti-SEZ6L antibody WB image

Western blot: HEK293 stained with ARG45547 anti-SEZ6L antibody at 0.5 µg/ml dilution.



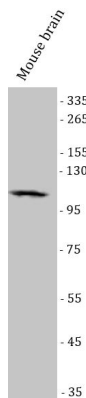
ARG45547 anti-SEZ6L antibody FACS image

Flow Cytometry: U2OS stained with ARG45547 anti-SEZ6L antibody at $1 \mu\text{g}/10^6$ cells dilution.



ARG45547 anti-SEZ6L antibody WB image

Western blot: Rat brain stained with ARG45547 anti-SEZ6L antibody at $0.5 \mu\text{g}/\text{ml}$ dilution.



ARG45547 anti-SEZ6L antibody WB image

Western blot: Mouse brain stained with ARG45547 anti-SEZ6L antibody at $0.5 \mu\text{g}/\text{ml}$ dilution.