

ARG45605 anti-PLP2 antibody

Package: 50 µg
Store at: -20°C

Summary

Product Description	Rabbit Polyclonal antibody recognizes PLP2
Tested Reactivity	Hu
Tested Application	FACS, IHC-P, WB
Specificity	PLP2
Host	Rabbit
Clonality	Polyclonal
Isotype	IgG
Target Name	PLP2
Species	Human
Immunogen	Recombinant protein containing to human PLP2.
Conjugation	Un-conjugated
Alternate Names	PLP2; Proteolipid Protein 2; A4; Proteolipid Protein 2 (Colonic Epithelium-Enriched); A4 Differentiation-Dependent Protein; Differentiation-Dependent Protein A4; Intestinal Membrane A4 Protein; MGC126187; A4-LSB; A4LSB

Application Instructions

Application table	Application	Dilution
	FACS	1 - 3 µg/10 ⁶ cells
	IHC-P	2-5 µg/ml
	WB	0.25-0.5 µg/ml
	Application Note	* The dilutions indicate recommended starting dilutions and the optimal dilutions or concentrations should be determined by the scientist.

Properties

Form	Powder
Purification	Affinity purified
Buffer	0.2% Na ₂ HPO ₄ , 0.9% NaCl and 4% Trehalose.
Stabilizer	4% Trehalose
Concentration	0.5 mg/ml
Storage instruction	For continuous use, store undiluted antibody at 2-8°C for up to a week. For long-term storage, aliquot and store at -20°C or below. Storage in frost free freezers is not recommended. Avoid repeated freeze/thaw cycles. Suggest spin the vial prior to opening. The antibody solution should be gently mixed before use.

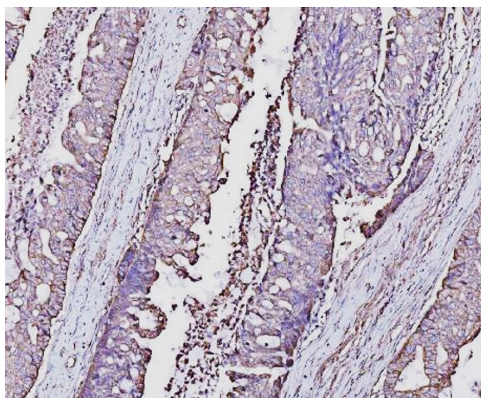
Note

For laboratory research only, not for drug, diagnostic or other use.

Bioinformation

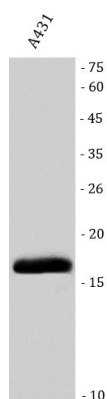
Gene Symbol	PLP2
Gene Full Name	Proteolipid Protein 2
Background	This gene encodes an integral membrane protein that localizes to the endoplasmic reticulum in colonic epithelial cells. The encoded protein can multimerize and may function as an ion channel. A polymorphism in the promoter of this gene may be linked to an increased risk of X-linked cognitive disability. A pseudogene of this gene is found on chromosome 5. [provided by RefSeq, Jan 2010]
Function	May play a role in cell differentiation in the intestinal epithelium. [UniProt]
Calculated Mw	86 kDa
PTM	Glycoprotein. [UniProt]
Cellular Localization	Membrane. [UniProt]

Images



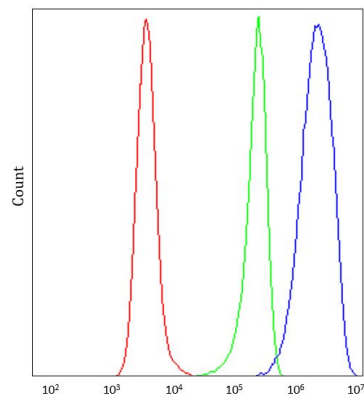
ARG45605 anti-PLP2 antibody IHC-P image

Immunohistochemistry: Human adenocarcinoma of the right colon stained with ARG45605 anti-PLP2 antibody at 2 µg/ml dilution.



ARG45605 anti-PLP2 antibody WB image

Western blot: A431 stained with ARG45605 anti-PLP2 antibody at 0.5 µg/ml dilution.



ARG45605 anti-PLP2 antibody FACS image

Flow Cytometry: Daudi stained with ARG45605 anti-PLP2 antibody at $1\text{ }\mu\text{g}/10^6$ cells dilution.