

ARG45626 anti-PAR-3 / PARD3 antibody

Package: 50 µg
Store at: -20°C

Summary

Product Description	Rabbit Polyclonal antibody recognizes PAR-3 / PARD3
Tested Reactivity	Hu
Tested Application	FACS, ICC/IF, IHC-P, WB
Host	Rabbit
Clonality	Polyclonal
Isotype	IgG
Target Name	PAR-3 / PARD3
Species	Human
Immunogen	Recombinant protein containing to human PAR-3 / PARD3.
Conjugation	Un-conjugated
Alternate Names	PARD3; Par-3 Family Cell Polarity Regulator; PAR3; ASIP; PPP1R118; Bazooka; PARD3A; Baz; Atypical PKC Isotype-Specific Interacting Protein; Protein Phosphatase 1, Regulatory Subunit 118; Par-3 Family Cell Polarity Regulator Alpha; Partitioning Defective 3 Homolog; CTCL Tumor Antigen Se2-5; PAR3-Alpha; PARD-3; Par-3 (Partitioning Defective 3, C.Elegans) Homolog; Par-3 Partitioning Defective 3 Homolog (C. Elegans); Atypical PKC Isotype-Specific-Interacting Protein; Par-3 Partitioning Defective 3 Homolog; PAR3alpha; SE2-5L16; SE2-5LT1; SE2-5T2; PAR3A; PAR-3

Application Instructions

Application table	Application	Dilution
	FACS	1 - 3 µg/10 ⁶ cells
	ICC/IF	5 µg/ml
	IHC-P	2-5 µg/ml
	WB	0.25-0.5 µg/ml
Application Note	* The dilutions indicate recommended starting dilutions and the optimal dilutions or concentrations should be determined by the scientist.	
Observed Size	151 kDa	

Properties

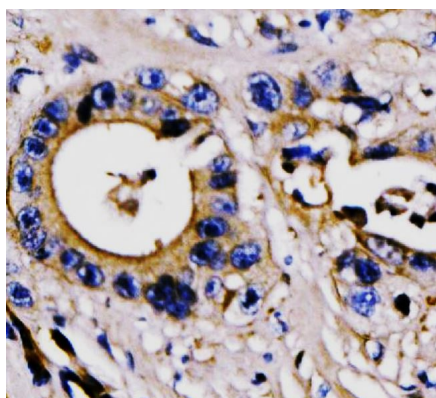
Form	Liquid
Purification	Affinity purified
Buffer	0.2% Na ₂ HPO ₄ , 0.9% NaCl and 4% Trehalose.
Stabilizer	4% Trehalose
Concentration	0.5 mg/ml

Storage instruction	For continuous use, store undiluted antibody at 2-8°C for up to a week. For long-term storage, aliquot and store at -20°C or below. Storage in frost free freezers is not recommended. Avoid repeated freeze/thaw cycles. Suggest spin the vial prior to opening. The antibody solution should be gently mixed before use.
Note	For laboratory research only, not for drug, diagnostic or other use.

Bioinformation

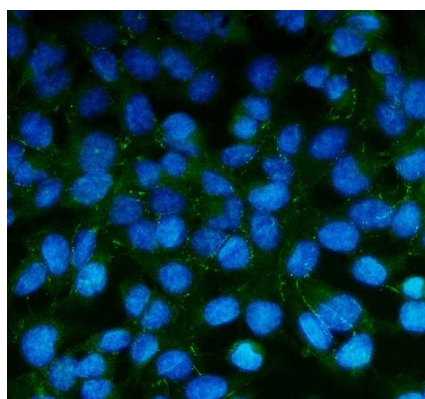
Gene Symbol	PARD3
Gene Full Name	Par-3 Family Cell Polarity Regulator
Background	This gene encodes a member of the PARD protein family. PARD family members interact with other PARD family members and other proteins; they affect asymmetrical cell division and direct polarized cell growth. Multiple alternatively spliced transcript variants have been described for this gene. [provided by RefSeq, Oct 2011]
Function	Adapter protein involved in asymmetrical cell division and cell polarization processes. Seems to play a central role in the formation of epithelial tight junctions. [UniProt]
Calculated Mw	151 kDa
PTM	Acetylation; Phosphoprotein. [UniProt]
Cellular Localization	Cell junction; Cell membrane; Cytoplasm; Cytoskeleton; Membrane; Tight junction. [UniProt]

Images



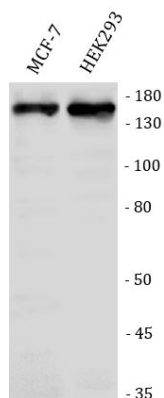
ARG45626 anti-PAR-3 / PARD3 antibody IHC-P image

Immunohistochemistry: Human appendiceal adenocarcinoma stained with ARG45626 anti-PAR-3 / PARD3 antibody at 2 µg/ml dilution.



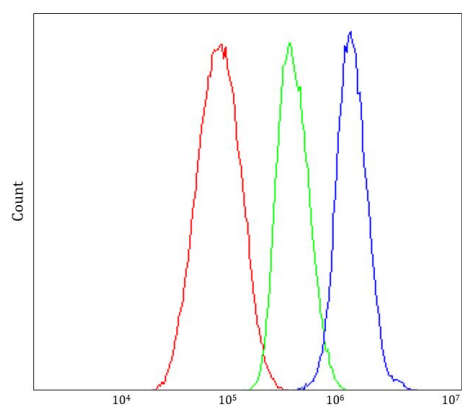
ARG45626 anti-PAR-3 / PARD3 antibody ICC/IF image

Immunofluorescence: U2OS stained with ARG45626 anti-PAR-3 / PARD3 antibody at 5 µg/ml dilution.



ARG45626 anti-PAR-3 / PARD3 antibody WB image

Western blot: MCF-7 and HEK293 stained with ARG45626 anti-PAR-3 / PARD3 antibody at 0.5 $\mu\text{g/ml}$ dilution.



ARG45626 anti-PAR-3 / PARD3 antibody FACS image

Flow Cytometry: HepG2 stained with ARG45626 anti-PAR-3 / PARD3 antibody at 1 $\mu\text{g}/10^6$ cells dilution.