

ARG45629 anti-Tamm Horsfall Glycoprotein antibody

Package: 50 µg
Store at: -20°C

Summary

Product Description	Rabbit Polyclonal antibody recognizes Tamm Horsfall Glycoprotein
Tested Reactivity	Hu, Ms, Rat
Tested Application	FACS, IHC-P, WB
Host	Rabbit
Clonality	Polyclonal
Isotype	IgG
Target Name	Tamm Horsfall Glycoprotein
Species	Human
Immunogen	Recombinant protein containing to human Tamm Horsfall Glycoprotein.
Conjugation	Un-conjugated
Alternate Names	UMOD; Uromodulin; HNFJ; MCKD2; THGP; HNFJ1; FJHN; THP; Tamm-Horsfall urinary glycoprotein; ADMCKD2

Application Instructions

Application table	Application	Dilution
	FACS	1 - 3 µg/10 ⁶ cells
	IHC-P	2-5 µg/ml
	WB	0.25-0.5 µg/ml
Application Note	* The dilutions indicate recommended starting dilutions and the optimal dilutions or concentrations should be determined by the scientist.	

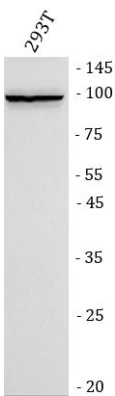
Properties

Form	Liquid
Purification	Affinity purified
Buffer	0.9% NaCl, 0.2% Na ₂ HPO ₄ , 0.01% Sodium azide and 4% Trehalose.
Preservative	0.01% Sodium azide
Stabilizer	4% Trehalose
Concentration	0.5 mg/ml
Storage instruction	For continuous use, store undiluted antibody at 2-8°C for up to a week. For long-term storage, aliquot and store at -20°C or below. Storage in frost free freezers is not recommended. Avoid repeated freeze/thaw cycles. Suggest spin the vial prior to opening. The antibody solution should be gently mixed before use.

Bioinformation

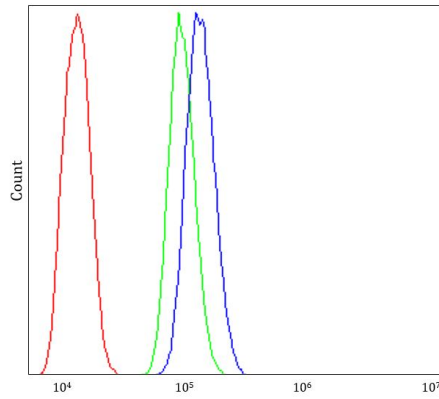
Gene Symbol	UMOD
Gene Full Name	uromodulin
Background	<p>The protein encoded by this gene is the most abundant protein in mammalian urine under physiological conditions. Its excretion in urine follows proteolytic cleavage of the ectodomain of its glycosyl phosphatidylinositol-anchored counterpart that is situated on the luminal cell surface of the loop of Henle. This protein may act as a constitutive inhibitor of calcium crystallization in renal fluids. Excretion of this protein in urine may provide defense against urinary tract infections caused by uropathogenic bacteria. Defects in this gene are associated with the renal disorders medullary cystic kidney disease-2 (MCKD2), glomerulocystic kidney disease with hyperuricemia and isosthenuria (GCKDHI), and familial juvenile hyperuricemic nephropathy (FJHN). Alternative splicing of this gene results in multiple transcript variants. [provided by RefSeq, Jul 2013]</p>
Function	<p>Uromodulin: Functions in biogenesis and organization of the apical membrane of epithelial cells of the thick ascending limb of Henle's loop (TALH), where it promotes formation of complex filamentous gel-like structure providing the water barrier permeability. May serve as a receptor for binding and endocytosis for cytokines (IL-1, IL-2) and TNF. Facilitates neutrophil migration across renal epithelial.</p> <p>Uromodulin, secreted form: Secreted into urine after proteolytically cleavage. Into the urine, may contribute to colloid osmotic pressure, retards passage of positively charged electrolytes, prevents urinary tract infection and modulates formation of supersaturated salts and their crystals. [UniProt]</p>
Calculated Mw	69 kDa
PTM	<p>N-glycosylated (PubMed:19005207, PubMed:26673890, PubMed:26811476). N-glycan heterogeneity at Asn-232: Hex7HexNAc6 (major) and dHex1Hex7HexNAc6 (minor); at Asn-322: dHex1Hex6HexNAc5 (minor), dHex1Hex7HexNAc6 (major) and dHex1Hex8HexNAc7 (minor); at Asn-396: Hex6HexNAc5 (major), dHex1Hex6HexNAc5 (minor) and Hex7HexNAc6 (minor) (PubMed:22171320). Proteolytically cleaved at a conserved C-terminal proteolytic cleavage site to generate the secreted form found in urine (PubMed:18375198, PubMed:19005207). This cleavage is catalyzed by HPN (PubMed:26673890). [UniProt]</p>
Cellular Localization	<p>Apical cell membrane; Lipid-anchor, GPI-anchor. Basolateral cell membrane; Lipid-anchor, GPI-anchor. Cell projection, cilium membrane. Note=Only a small fraction sorts to the basolateral pole of tubular epithelial cells compared to apical localization (PubMed:22776760). Secreted into urine after cleavage (PubMed:18375198, PubMed:26811476). Colocalizes with NPHP1 and KIF3A (PubMed:20172860). Uromodulin, secreted form: Secreted. Note=Detected in urine. [UniProt]</p>

Images



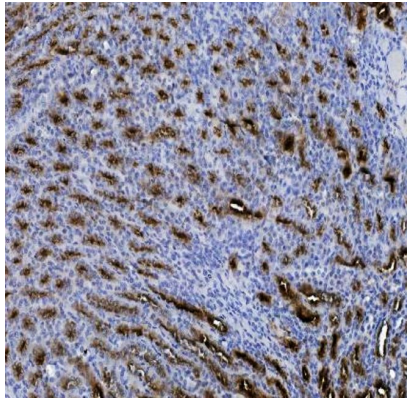
ARG45629 anti-Tamm Horsfall Glycoprotein antibody WB image

Western blot: 293T stained with ARG45629 anti-Tamm Horsfall Glycoprotein antibody at 0.5 µg/ml dilution.



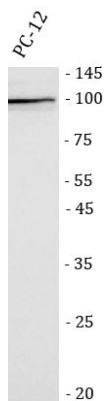
ARG45629 anti-Tamm Horsfall Glycoprotein antibody FACS image

Flow Cytometry: U937 stained with ARG45629 anti-Tamm Horsfall Glycoprotein antibody at $1\text{ }\mu\text{g}/10^6$ cells dilution.



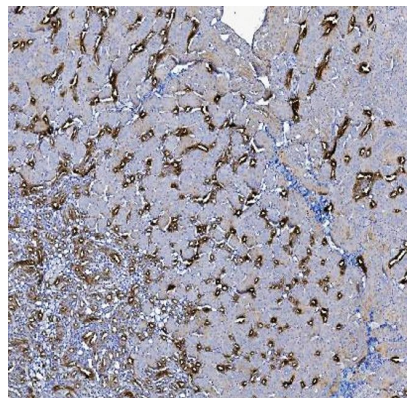
ARG45629 anti-Tamm Horsfall Glycoprotein antibody IHC-P image

Immunohistochemistry: Rat kidney stained with ARG45629 anti-Tamm Horsfall Glycoprotein antibody at $2\text{ }\mu\text{g}/\text{ml}$ dilution.



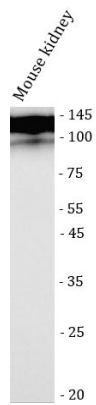
ARG45629 anti-Tamm Horsfall Glycoprotein antibody WB image

Western blot: PC-12 stained with ARG45629 anti-Tamm Horsfall Glycoprotein antibody at $0.5\text{ }\mu\text{g}/\text{ml}$ dilution.



ARG45629 anti-Tamm Horsfall Glycoprotein antibody IHC-P image

Immunohistochemistry: Mouse kidney stained with ARG45629 anti-Tamm Horsfall Glycoprotein antibody at $2\text{ }\mu\text{g}/\text{ml}$ dilution.



ARG45629 anti-Tamm Horsfall Glycoprotein antibody WB image

Western blot: Mouse kidney stained with ARG45629 anti-Tamm Horsfall Glycoprotein antibody at 0.5 µg/ml dilution.