

ARG45632 anti-DIAPH1 antibody

Package: 50 µg
Store at: -20°C

Summary

Product Description	Rabbit Polyclonal antibody recognizes DIAPH1
Tested Reactivity	Hu, Mk
Tested Application	FACS, ICC/IF, WB
Host	Rabbit
Clonality	Polyclonal
Isotype	IgG
Target Name	DIAPH1
Species	Human
Immunogen	Recombinant protein containing to human DIAPH1.
Conjugation	Un-conjugated
Alternate Names	DIAPH1; Diaphanous Related Formin 1; HDIA1; LFHL1; MDia1; Mammalian Diaphanous Related Formin 1; Protein Diaphanous Homolog 1; DFNA1; DRF1; Diaphanous (Drosophila, Homolog) 1; Diaphanous Homolog 1 (Drosophila); Diaphanous-Related Formin-1; SCBMS; DIAP1; DIA1

Application Instructions

Application table	Application	Dilution
	FACS	1 - 3 µg/10 ⁶ cells
	ICC/IF	5 µg/ml
	WB	0.25-0.5 µg/ml
Application Note	* The dilutions indicate recommended starting dilutions and the optimal dilutions or concentrations should be determined by the scientist.	

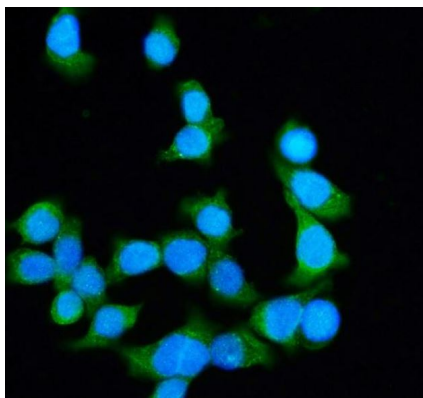
Properties

Form	Liquid
Purification	Affinity purified
Buffer	0.2% Na ₂ HPO ₄ , 0.9% NaCl and 4% Trehalose.
Stabilizer	4% Trehalose
Concentration	0.5 mg/ml
Storage instruction	For continuous use, store undiluted antibody at 2-8°C for up to a week. For long-term storage, aliquot and store at -20°C or below. Storage in frost free freezers is not recommended. Avoid repeated freeze/thaw cycles. Suggest spin the vial prior to opening. The antibody solution should be gently mixed before use.
Note	For laboratory research only, not for drug, diagnostic or other use.

Bioinformation

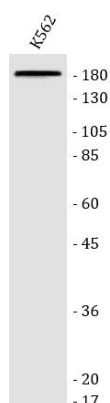
Gene Symbol	DIAPH1
Gene Full Name	Diaphanous Related Formin 1
Background	This gene is a homolog of the Drosophila diaphanous gene, and has been linked to autosomal dominant, fully penetrant, nonsyndromic sensorineural progressive low-frequency hearing loss. Actin polymerization involves proteins known to interact with diaphanous protein in Drosophila and mouse. It has therefore been speculated that this gene may have a role in the regulation of actin polymerization in hair cells of the inner ear. Alternatively spliced transcript variants encoding distinct isoforms have been found for this gene. [provided by RefSeq, Jul 2008]
Function	Actin nucleation and elongation factor required for the assembly of F-actin structures, such as actin cables and stress fibers (By similarity). [UniProt]
Calculated Mw	141 kDa
PTM	Acetylation; Phosphoprotein. [UniProt]
Cellular Localization	Cell membrane; Cell projection; Cytoplasm; Cytoskeleton; Membrane; Nucleus. [UniProt]

Images



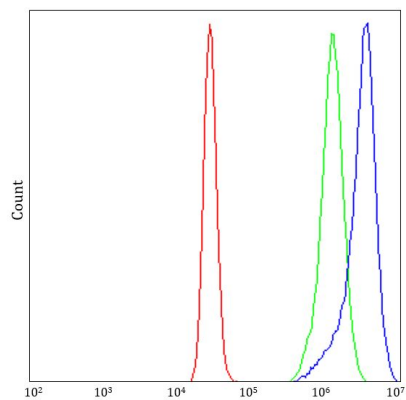
ARG45632 anti-DIAPH1 antibody ICC/IF image

Immunofluorescence: CACO-2 stained with ARG45632 anti-DIAPH1 antibody at 5 µg/ml dilution.



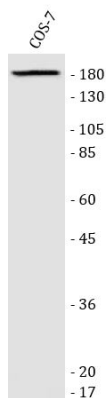
ARG45632 anti-DIAPH1 antibody WB image

Western blot: K562 stained with ARG45632 anti-DIAPH1 antibody at 0.5 µg/ml dilution.



ARG45632 anti-DIAPH1 antibody FACS image

Flow Cytometry: K562 stained with ARG45632 anti-DIAPH1 antibody at $1 \mu\text{g}/10^6$ cells dilution.



ARG45632 anti-DIAPH1 antibody WB image

Western blot: COS-7 stained with ARG45632 anti-DIAPH1 antibody at $0.5 \mu\text{g}/\text{ml}$ dilution.