

ARG45640
anti-PPP1R35 antibodyPackage: 50 µg
Store at: -20°C

Summary

Product Description	Rabbit Polyclonal antibody recognizes PPP1R35
Tested Reactivity	Hu
Tested Application	FACS, ICC/IF, WB
Host	Rabbit
Clonality	Polyclonal
Isotype	IgG
Target Name	PPP1R35
Species	Human
Immunogen	Recombinant protein containing to human PPP1R35.
Conjugation	Un-conjugated
Alternate Names	PPP1R35; Protein Phosphatase 1 Regulatory Subunit 35; C7orf47; MGC22793; Protein Phosphatase 1, Regulatory Subunit 35; Chromosome 7 Open Reading Frame 47; UPF0683 Protein C7orf47

Application Instructions

Application table	Application	Dilution
	FACS	1 - 3 µg/10 ⁶ cells
	ICC/IF	5 µg/ml
	WB	0.25-0.5 µg/ml
Application Note	* The dilutions indicate recommended starting dilutions and the optimal dilutions or concentrations should be determined by the scientist.	
Observed Size	30 kDa	

Properties

Form	Liquid
Purification	Affinity purified
Buffer	0.2% Na ₂ HPO ₄ , 0.9% NaCl and 4% Trehalose.
Stabilizer	4% Trehalose
Concentration	0.5 mg/ml
Storage instruction	For continuous use, store undiluted antibody at 2-8°C for up to a week. For long-term storage, aliquot and store at -20°C or below. Storage in frost free freezers is not recommended. Avoid repeated freeze/thaw cycles. Suggest spin the vial prior to opening. The antibody solution should be gently mixed before use.

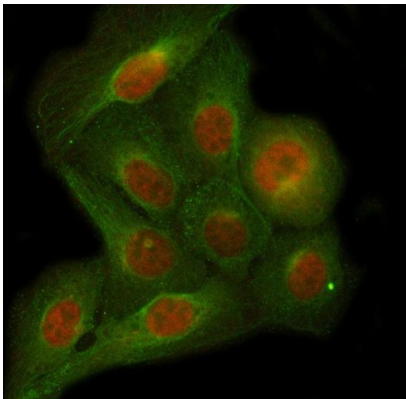
Note

For laboratory research only, not for drug, diagnostic or other use.

Bioinformation

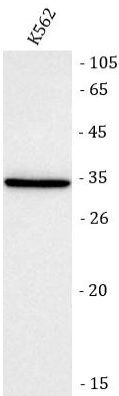
Gene Symbol	PPP1R35
Gene Full Name	Protein Phosphatase 1 Regulatory Subunit 35
Background	Predicted to enable phosphatase binding activity and protein phosphatase inhibitor activity. Involved in positive regulation of centriole elongation. Located in centriole and centrosome. [provided by Alliance of Genome Resources, Feb 2025]
Function	During centriole duplication, plays a role in the centriole elongation by promoting the recruitment of the microtubule-binding elongation machinery through its interaction with RTTN, leading to the centriole to centrosome conversion. [UniProt]
Calculated Mw	28 kDa
PTM	Phosphoprotein. [UniProt]
Cellular Localization	Cytoplasm; Cytoskeleton. [UniProt]

Images



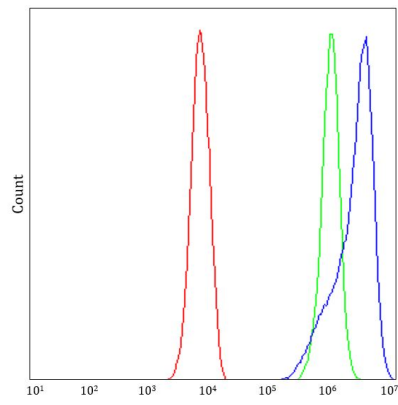
ARG45640 anti-PPP1R35 antibody ICC/IF image

Immunofluorescence: U2OS stained with ARG45640 anti-PPP1R35 antibody at 5 µg/ml dilution.



ARG45640 anti-PPP1R35 antibody WB image

Western blot: K562 stained with ARG45640 anti-PPP1R35 antibody at 0.5 µg/ml dilution.



ARG45640 anti-PPP1R35 antibody FACS image

Flow Cytometry: K562 stained with ARG45640 anti-PPP1R35 antibody at $1 \mu\text{g}/10^6$ cells dilution.