

ARG45648 anti-SLC40A1 antibody

Package: 50 µg
Store at: -20°C

Summary

Product Description	Rabbit Polyclonal antibody recognizes SLC40A1
Tested Reactivity	Hu, Ms, Rat
Tested Application	FACS, IHC-P, WB
Host	Rabbit
Clonality	Polyclonal
Isotype	IgG
Target Name	SLC40A1
Species	Human
Immunogen	Recombinant protein containing to human SLC40A1.
Conjugation	Un-conjugated
Alternate Names	SLC40A1; Solute Carrier Family 40 Member 1; IREG1; FPN1; FPN; SLC11A3; MTP1; HFE4; Solute Carrier Family 11 (Proton-Coupled Divalent Metal Ion Transporters), Member 3; Solute Carrier Family 40 (Iron-Regulated Transporter), Member 1; SLC40 Iron Transporter; Iron Regulated Gene 1; Ferroportin; Iron-Regulated Transporter 1; Ferroportin 1; Ferroportin-1; MSTP079; MST079

Application Instructions

Application table	Application	Dilution
	FACS	1 - 3 µg/10 ⁶ cells
	IHC-P	2-5 µg/ml
	WB	0.25-0.5 µg/ml
Application Note	* The dilutions indicate recommended starting dilutions and the optimal dilutions or concentrations should be determined by the scientist.	
Observed Size	70 kDa	

Properties

Form	Liquid
Purification	Affinity purified
Buffer	0.2% Na ₂ HPO ₄ , 0.9% NaCl and 4% Trehalose.
Stabilizer	4% Trehalose
Concentration	0.5 mg/ml
Storage instruction	For continuous use, store undiluted antibody at 2-8°C for up to a week. For long-term storage, aliquot and store at -20°C or below. Storage in frost free freezers is not recommended. Avoid repeated freeze/thaw cycles. Suggest spin the vial prior to opening. The antibody solution should be gently mixed

before use.

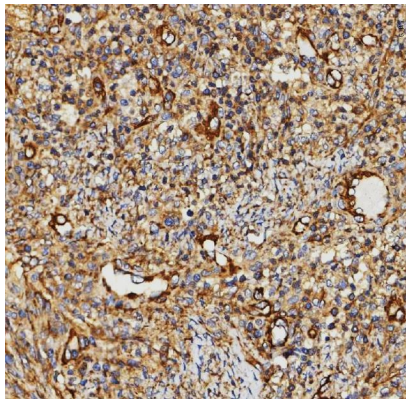
Note

For laboratory research only, not for drug, diagnostic or other use.

Bioinformation

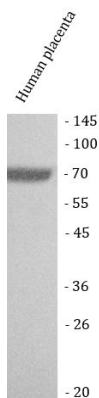
Gene Symbol	SLC40A1
Gene Full Name	Solute Carrier Family 40 Member 1
Background	The protein encoded by this gene is a cell membrane protein that may be involved in iron export from duodenal epithelial cells. Defects in this gene are a cause of hemochromatosis type 4 (HFE4). [provided by RefSeq, Jul 2008]
Function	Transports Fe(2+) from the inside of a cell to the outside of the cell, playing a key role for maintaining systemic iron homeostasis. [UniProt]
Calculated Mw	63 kDa
PTM	Glycoprotein; Ubl conjugation. [UniProt]
Cellular Localization	Cell membrane. [UniProt]

Images



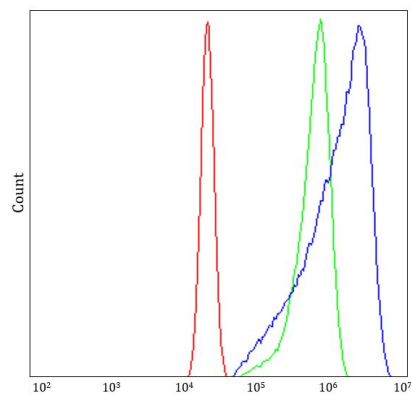
ARG45648 anti-SLC40A1 antibody IHC-P image

Immunohistochemistry: Human larynx squamous cell carcinoma stained with ARG45648 anti-SLC40A1 antibody at 2 µg/ml dilution.



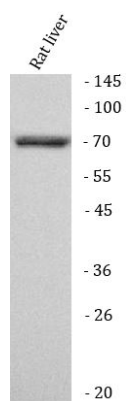
ARG45648 anti-SLC40A1 antibody WB image

Western blot: Mouse spleen stained with ARG45648 anti-SLC40A1 antibody at 0.5 µg/ml dilution.



ARG45648 anti-SLC40A1 antibody FACS image

Flow Cytometry: U2OS stained with ARG45648 anti-SLC40A1 antibody at 1 $\mu\text{g}/10^6$ cells dilution.



ARG45648 anti-SLC40A1 antibody WB image

Western blot: Rat liver stained with ARG45648 anti-SLC40A1 antibody at 0.5 $\mu\text{g}/\text{ml}$ dilution.