

ARG45649 anti-SRBD1 antibody

Package: 50 µg
Store at: -20°C

Summary

Product Description	Rabbit Polyclonal antibody recognizes SRBD1
Tested Reactivity	Hu, Ms, Rat
Tested Application	FACS, IHC-P, WB
Host	Rabbit
Clonality	Polyclonal
Isotype	IgG
Target Name	SRBD1
Species	Human
Immunogen	Recombinant protein containing to human SRBD1.
Conjugation	Un-conjugated
Alternate Names	SRBD1; S1 RNA Binding Domain 1; S1 RNA-Binding Domain-Containing Protein 1; FLJ10379; WUGSC:H_NH0576F01.1; H_NH0576F01.1

Application Instructions

Application table	Application	Dilution
	FACS	1 - 3 µg/10 ⁶ cells
	IHC-P	2-5 µg/ml
	WB	0.25-0.5 µg/ml
Application Note	* The dilutions indicate recommended starting dilutions and the optimal dilutions or concentrations should be determined by the scientist.	

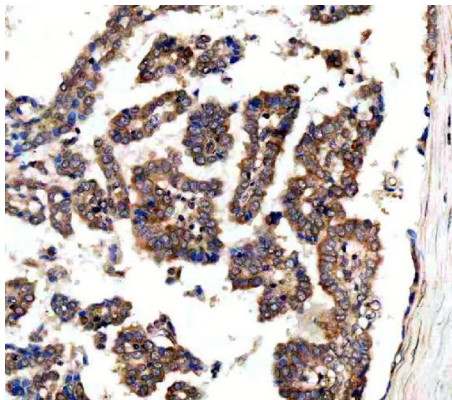
Properties

Form	Liquid
Purification	Affinity purified
Buffer	0.2% Na ₂ HPO ₄ , 0.9% NaCl and 4% Trehalose.
Stabilizer	4% Trehalose
Concentration	0.5 mg/ml
Storage instruction	For continuous use, store undiluted antibody at 2-8°C for up to a week. For long-term storage, aliquot and store at -20°C or below. Storage in frost free freezers is not recommended. Avoid repeated freeze/thaw cycles. Suggest spin the vial prior to opening. The antibody solution should be gently mixed before use.
Note	For laboratory research only, not for drug, diagnostic or other use.

Bioinformation

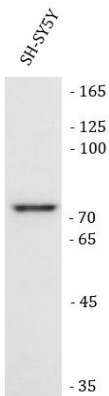
Gene Symbol	SRBD1
Gene Full Name	S1 RNA Binding Domain 1
Background	Predicted to enable mRNA binding activity. Predicted to be a structural constituent of ribosome. Predicted to be involved in translation. [provided by Alliance of Genome Resources, Feb 2025]
Calculated Mw	112 kDa
PTM	Isopeptide bond; Phosphoprotein; Ubl conjugation

Images



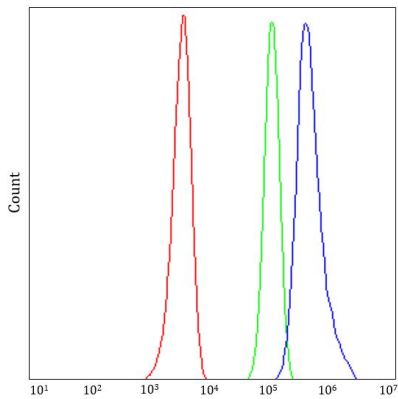
ARG45649 anti-SRBD1 antibody IHC-P image

Immunohistochemistry: Human lung adenocarcinoma stained with ARG45649 anti-SRBD1 antibody at 2 µg/ml dilution.



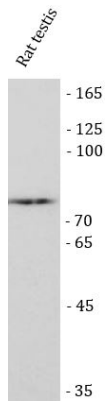
ARG45649 anti-SRBD1 antibody WB image

Western blot: SH-SY5Y stained with ARG45649 anti-SRBD1 antibody at 0.5 µg/ml dilution.



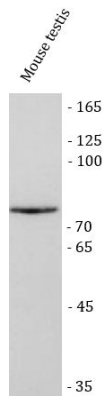
ARG45649 anti-SRBD1 antibody FACS image

Flow Cytometry: HEL stained with ARG45649 anti-SRBD1 antibody at 1 µg/10⁶ cells dilution.



ARG45649 anti-SRBD1 antibody WB image

Western blot: Rat testis stained with ARG45649 anti-SRBD1 antibody at 0.5 µg/ml dilution.



ARG45649 anti-SRBD1 antibody WB image

Western blot: Mouse brain stained with ARG45649 anti-SRBD1 antibody at 0.5 µg/ml dilution.