

ARG45661 anti-Afamin / alpha Albumin antibody

Package: 50 µg
Store at: -20°C

Summary

Product Description	Rabbit Polyclonal antibody recognizes Afamin / alpha Albumin
Tested Reactivity	Ms, Rat
Tested Application	FACS, IHC-P, WB
Host	Rabbit
Clonality	Polyclonal
Isotype	IgG
Target Name	Afamin / alpha Albumin
Species	Mouse
Immunogen	Recombinant protein containing to mouse Afamin / alpha Albumin.
Conjugation	Un-conjugated
Alternate Names	AFM; Alpha-albumin; ALF; ALBA; ALB2; Afamin; Alpha-Alb

Application Instructions

Application table	Application	Dilution
	FACS	1 - 3 µg/10 ⁶ cells
	IHC-P	2-5 µg/ml
	WB	0.1-0.25 µg/ml
Application Note	* The dilutions indicate recommended starting dilutions and the optimal dilutions or concentrations should be determined by the scientist.	
Observed Size	87 kDa	

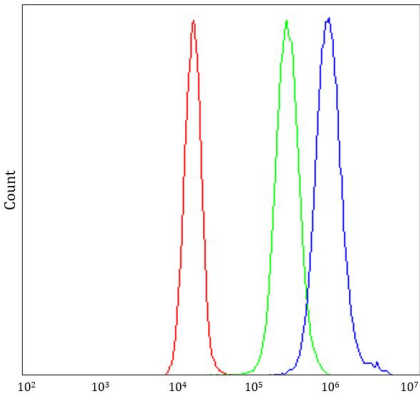
Properties

Form	Liquid
Purification	Affinity purified
Buffer	0.9% NaCl, 0.2% Na ₂ HPO ₄ , 0.01% Sodium azide and 4% Trehalose.
Preservative	0.01% Sodium azide
Stabilizer	4% Trehalose
Concentration	0.5 mg/ml
Storage instruction	For continuous use, store undiluted antibody at 2-8°C for up to a week. For long-term storage, aliquot and store at -20°C or below. Storage in frost free freezers is not recommended. Avoid repeated freeze/thaw cycles. Suggest spin the vial prior to opening. The antibody solution should be gently mixed before use.

Bioinformation

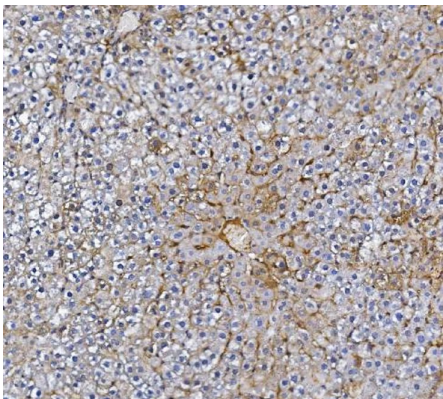
Gene Symbol	AFM
Gene Full Name	afamin
Background	This gene is a member of the albumin gene family, which is comprised of four genes that localize to chromosome 4 in a tandem arrangement. These four genes encode structurally-related serum transport proteins that are known to be evolutionarily related. The protein encoded by this gene is regulated developmentally, expressed in the liver and secreted into the bloodstream. [provided by RefSeq, Jul 2008]
Function	Vitamin E binding protein. May transport vitamin E in body fluids under conditions where the lipoprotein system is not sufficient. May be involved in the regulation and transport of vitamin E at the blood-brain barrier. [UniProt]
Calculated Mw	69 kDa
PTM	N-glycosylated; more than 90% of the glycans are sialylated. [UniProt]
Cellular Localization	Secreted. [UniProt]

Images



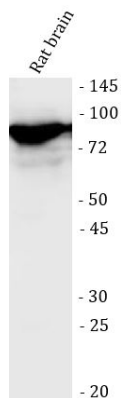
ARG45661 anti-Afamin / alpha Albumin antibody FACS image

Flow Cytometry: HEPA1-6 stained with ARG45661 anti-Afamin / alpha Albumin antibody at 1 μ g/ 10^6 cells dilution.



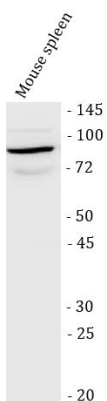
ARG45661 anti-Afamin / alpha Albumin antibody IHC-P image

Immunohistochemistry: Rat liver stained with ARG45661 anti-Afamin / alpha Albumin antibody at 2 μ g/ml dilution.



ARG45661 anti-Afamin / alpha Albumin antibody WB image

Western blot: Rat brain stained with ARG45661 anti-Afamin / alpha Albumin antibody at 0.5 µg/ml dilution.



ARG45661 anti-Afamin / alpha Albumin antibody WB image

Western blot: Mouse spleen stained with ARG45661 anti-Afamin / alpha Albumin antibody at 0.5 µg/ml dilution.