

ARG45675 anti-CLTB antibody

Package: 50 µg
Store at: -20°C

Summary

Product Description	Rabbit Polyclonal antibody recognizes CLTB
Tested Reactivity	Hu, Ms, Rat
Tested Application	FACS, IHC-P, WB
Host	Rabbit
Clonality	Polyclonal
Isotype	IgG
Target Name	CLTB
Species	Human
Immunogen	Synthetic peptide corresponding to middle region of human CLTB.
Conjugation	Un-conjugated
Alternate Names	CLTB; Clathrin Light Chain B; Lcb; Clathrin, Light Polypeptide (Lcb); Clathrin, Light Chain (Lcb); Clathrin, Light Chain B

Application Instructions

Application table	Application	Dilution
	FACS	1 - 3 µg/10 ⁶ cells
	IHC-P	2-5 µg/ml
	WB	0.25-0.5 µg/ml
Application Note	* The dilutions indicate recommended starting dilutions and the optimal dilutions or concentrations should be determined by the scientist.	
Observed Size	32 kDa	

Properties

Form	Liquid
Purification	Affinity purified
Buffer	0.2% Na ₂ HPO ₄ , 0.9% NaCl and 4% Trehalose.
Stabilizer	4% Trehalose
Concentration	0.5 mg/ml
Storage instruction	For continuous use, store undiluted antibody at 2-8°C for up to a week. For long-term storage, aliquot and store at -20°C or below. Storage in frost free freezers is not recommended. Avoid repeated freeze/thaw cycles. Suggest spin the vial prior to opening. The antibody solution should be gently mixed before use.

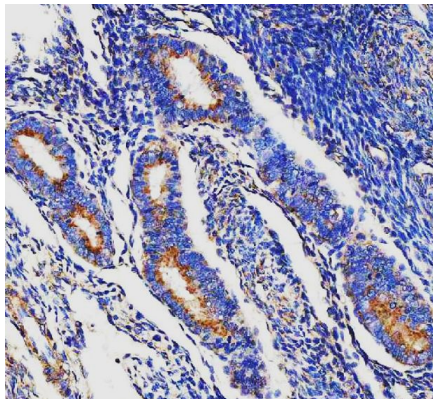
Note

For laboratory research only, not for drug, diagnostic or other use.

Bioinformation

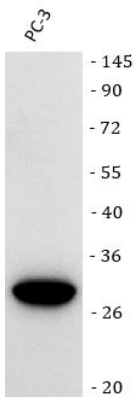
Gene Symbol	CLTB
Gene Full Name	Clathrin Light Chain B
Background	Clathrin is a large, soluble protein composed of heavy and light chains. It functions as the main structural component of the lattice-type cytoplasmic face of coated pits and vesicles which entrap specific macromolecules during receptor-mediated endocytosis. This gene encodes one of two clathrin light chain proteins which are believed to function as regulatory elements. Alternative splicing results in multiple transcript variants. [provided by RefSeq, Jul 2008]
Function	Clathrin is the major protein of the polyhedral coat of coated pits and vesicles. [UniProt]
Calculated Mw	25 kDa
PTM	Acetylation; Disulfide bond; Phosphoprotein. [UniProt]
Cellular Localization	Coated pit; Cytoplasmic vesicle; Membrane. [UniProt]

Images



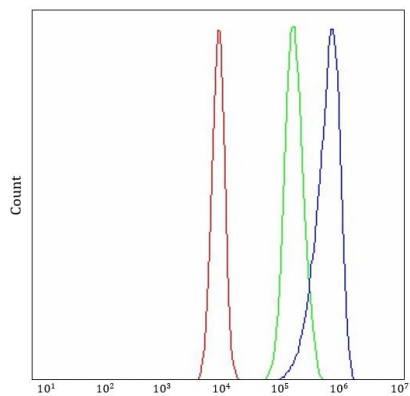
ARG45675 anti-CLTB antibody IHC-P image

Immunohistochemistry: Human endometrial cancer stained with ARG45675 anti-CLTB antibody at 2 µg/ml dilution.



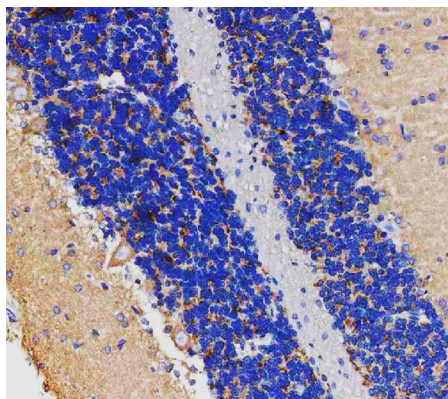
ARG45675 anti-CLTB antibody WB image

Western blot: PC-3 stained with ARG45675 anti-CLTB antibody at 0.5 µg/ml dilution.



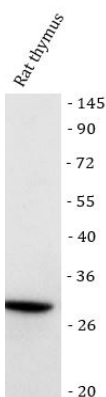
ARG45675 anti-CLTB antibody FACS image

Flow Cytometry: A431 stained with ARG45675 anti-CLTB antibody at 1 $\mu\text{g}/10^6$ cells dilution.



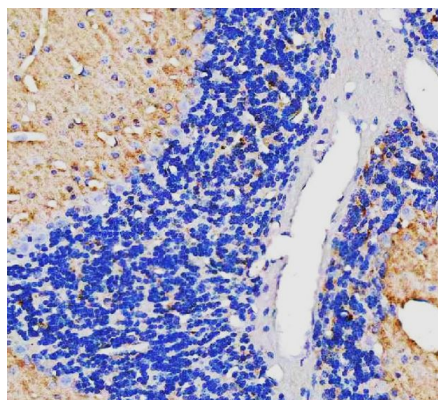
ARG45675 anti-CLTB antibody IHC-P image

Immunohistochemistry: Rat cerebellum stained with ARG45675 anti-CLTB antibody at 2 $\mu\text{g}/\text{ml}$ dilution.



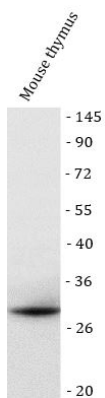
ARG45675 anti-CLTB antibody WB image

Western blot: Rat thymus stained with ARG45675 anti-CLTB antibody at 0.5 $\mu\text{g}/\text{ml}$ dilution.



ARG45675 anti-CLTB antibody IHC-P image

Immunohistochemistry: Mouse cerebellum stained with ARG45675 anti-CLTB antibody at 2 $\mu\text{g}/\text{ml}$ dilution.



ARG45675 anti-CLTB antibody WB image

Western blot: Mouse thymus stained with ARG45675 anti-CLTB antibody at 0.5 µg/ml dilution.