

## ARG45689 anti-MYH6 antibody

Package: 50 µg  
Store at: -20°C

### Summary

Product Description	Rabbit Polyclonal antibody recognizes MYH6
Tested Reactivity	Hu, Ms, Rat
Tested Application	FACS, IHC-P, WB
Host	Rabbit
Clonality	Polyclonal
Isotype	IgG
Target Name	MYH6
Species	Human
Immunogen	Synthetic peptide corresponding to middle region of human MYH6.
Conjugation	Un-conjugated
Alternate Names	MYH6; Myosin Heavy Chain 6; Myosin, Heavy Polypeptide 6, Cardiac Muscle, Alpha (Cardiomyopathy, Hypertrophic 1); MyHC-Alpha; Myosin-6; MYHCA; Myosin Heavy Chain, Cardiac Muscle Alpha Isoform; Cardiomyopathy, Hypertrophic 1; Alpha-MHC; CMD1EE; CMH14; ASD3; MYHC; SSS3

### Application Instructions

Application table	Application	Dilution
	FACS	1 - 3 µg/10 <sup>6</sup> cells
	IHC-P	2-5 µg/ml
	WB	0.25-0.5 µg/ml
Application Note	* The dilutions indicate recommended starting dilutions and the optimal dilutions or concentrations should be determined by the scientist.	

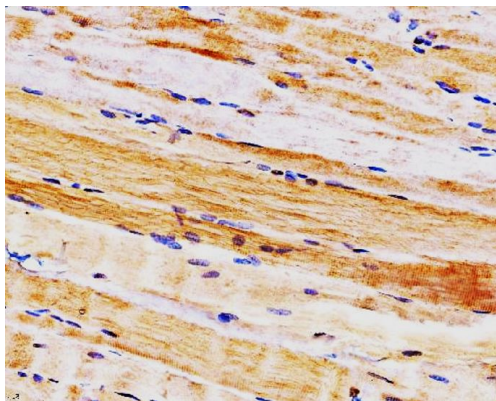
### Properties

Form	Liquid
Purification	Affinity purified
Buffer	0.2% Na <sub>2</sub> HPO <sub>4</sub> , 0.9% NaCl and 4% Trehalose.
Stabilizer	4% Trehalose
Concentration	0.5 mg/ml
Storage instruction	For continuous use, store undiluted antibody at 2-8°C for up to a week. For long-term storage, aliquot and store at -20°C or below. Storage in frost free freezers is not recommended. Avoid repeated freeze/thaw cycles. Suggest spin the vial prior to opening. The antibody solution should be gently mixed before use.
Note	For laboratory research only, not for drug, diagnostic or other use.

Bioinformation

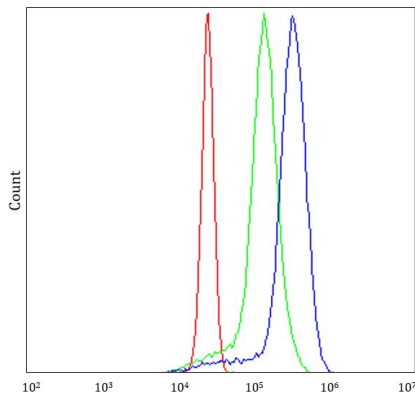
Gene Symbol	MYH6
Gene Full Name	Myosin Heavy Chain 6
Background	Cardiac muscle myosin is a hexamer consisting of two heavy chain subunits, two light chain subunits, and two regulatory subunits. This gene encodes the alpha heavy chain subunit of cardiac myosin. The gene is located approximately 4kb downstream of the gene encoding the beta heavy chain subunit of cardiac myosin. Mutations in this gene cause familial hypertrophic cardiomyopathy and atrial septal defect 3. [provided by RefSeq, Feb 2017]
Function	Muscle contraction. [UniProt]
Calculated Mw	224 kDa
PTM	Methylation; Phosphoprotein. [UniProt]
Cellular Localization	Cytoplasm; Thick filament. [UniProt]

Images



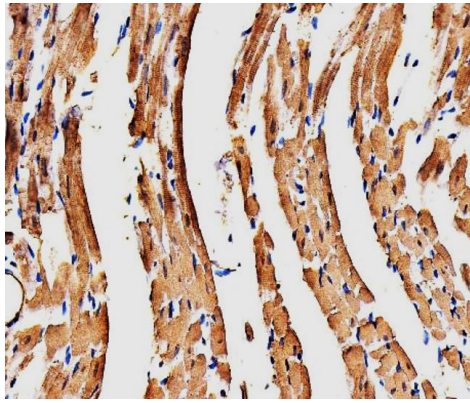
ARG45689 anti-MYH6 antibody IHC-P image

Immunohistochemistry: Human skeletal muscle stained with ARG45689 anti-MYH6 antibody at 2 µg/ml dilution.



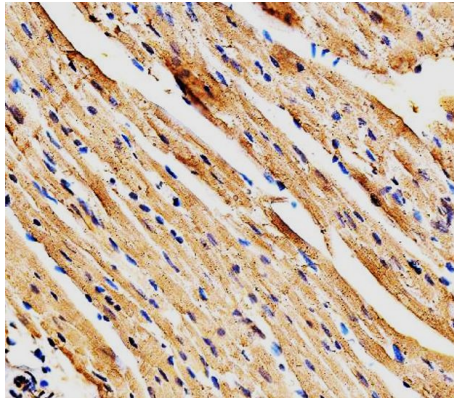
ARG45689 anti-MYH6 antibody FACS image

Flow Cytometry: U937 stained with ARG45689 anti-MYH6 antibody at 1 µg/10<sup>6</sup> cells dilution.



ARG45689 anti-MYH6 antibody IHC-P image

Immunohistochemistry: Rat cardiac stained with ARG45689 anti-MYH6 antibody at 2  $\mu\text{g}/\text{ml}$  dilution.



ARG45689 anti-MYH6 antibody IHC-P image

Immunohistochemistry: Mouse cardiac stained with ARG45689 anti-MYH6 antibody at 2  $\mu\text{g}/\text{ml}$  dilution.



ARG45689 anti-MYH6 antibody WB image

Western blot: Mouse heart stained with ARG45689 anti-MYH6 antibody at 0.5  $\mu\text{g}/\text{ml}$  dilution.