

ARG45737 anti-p170 antibody

Package: 50 µg
Store at: -20°C

Summary

Product Description	Rabbit Polyclonal antibody recognizes p170
Tested Reactivity	Hu, Ms, Rat
Tested Application	IHC-P, WB
Host	Rabbit
Clonality	Polyclonal
Isotype	IgG
Target Name	p170
Species	Human
Immunogen	Recombinant protein containing to human p170.
Conjugation	Un-conjugated
Alternate Names	RALGAPB; Ral GTPase Activating Protein Non-Catalytic Subunit Beta; KIAA1219; RalGAPbeta; Ral GTPase-Activating Protein Subunit Beta; DKFZp781M2411; Ral GTPase Activating Protein, Beta Subunit (Non-Catalytic); Ral GTPase Activating Protein Non-Catalytic Beta Subunit; P170

Application Instructions

Application table	Application	Dilution
	IHC-P	2-5 µg/ml
	WB	0.25-0.5 µg/ml
Application Note	* The dilutions indicate recommended starting dilutions and the optimal dilutions or concentrations should be determined by the scientist.	
Observed Size	167 kDa	

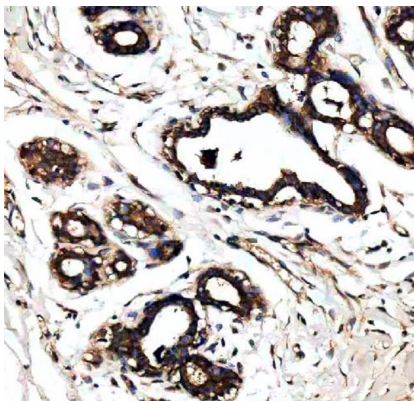
Properties

Form	Liquid
Purification	Affinity purified
Buffer	0.2% Na ₂ HPO ₄ , 0.9% NaCl and 4% Trehalose.
Stabilizer	4% Trehalose
Concentration	0.5 mg/ml
Storage instruction	For continuous use, store undiluted antibody at 2-8°C for up to a week. For long-term storage, aliquot and store at -20°C or below. Storage in frost free freezers is not recommended. Avoid repeated freeze/thaw cycles. Suggest spin the vial prior to opening. The antibody solution should be gently mixed before use.
Note	For laboratory research only, not for drug, diagnostic or other use.

Bioinformation

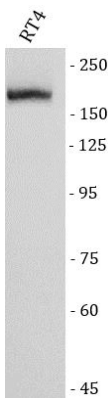
Gene Symbol	RALGAPB
Gene Full Name	Ral GTPase Activating Protein Non-Catalytic Subunit Beta
Background	Enables protein heterodimerization activity. Predicted to be involved in Ral protein signal transduction and activation of GTPase activity. Predicted to act upstream of or within regulation of exocyst localization and regulation of protein localization. [provided by Alliance of Genome Resources, Feb 2025]
Function	Non-catalytic subunit of the heterodimeric RalGAP1 and RalGAP2 complexes which act as GTPase activators for the Ras-like small GTPases RALA and RALB. [UniProt]
Calculated Mw	167 kDa
PTM	Phosphoprotein

Images



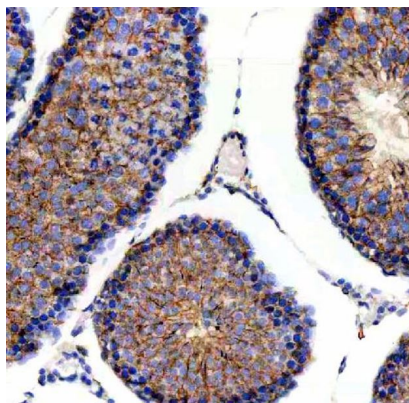
ARG45737 anti-p170 antibody IHC-P image

Immunohistochemistry: Human breast cancer stained with ARG45737 anti-p170 antibody at 2 µg/ml dilution.



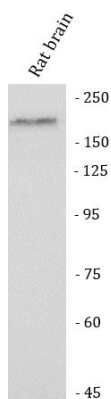
ARG45737 anti-p170 antibody WB image

Western blot: RT4 stained with ARG45737 anti-p170 antibody at 0.5 µg/ml dilution.



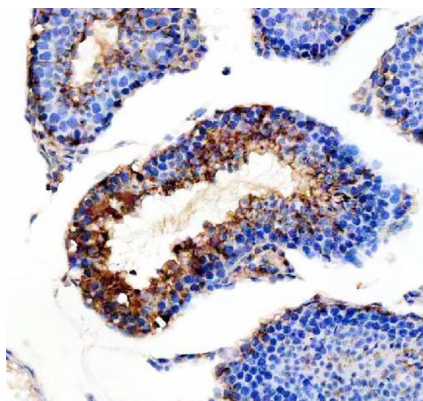
ARG45737 anti-p170 antibody IHC-P image

Immunohistochemistry: Rat testis stained with ARG45737 anti-p170 antibody at 2 µg/ml dilution.



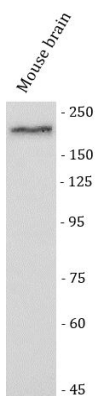
ARG45737 anti-p170 antibody WB image

Western blot: Rat brain stained with ARG45737 anti-p170 antibody at 0.5 µg/ml dilution.



ARG45737 anti-p170 antibody IHC-P image

Immunohistochemistry: Mouse testis stained with ARG45737 anti-p170 antibody at 2 µg/ml dilution.



ARG45737 anti-p170 antibody WB image

Western blot: Mouse brain stained with ARG45737 anti-p170 antibody at 0.5 µg/ml dilution.