

## ARG45738 anti-CCL6 antibody

Package: 50 µg  
Store at: -20°C

### Summary

Product Description	Rabbit Polyclonal antibody recognizes CCL6
Tested Reactivity	Ms, Rat
Tested Application	IHC-P, WB
Host	Rabbit
Clonality	Polyclonal
Isotype	IgG
Target Name	CCL6
Species	Mouse
Immunogen	Recombinant protein containing to mouse CCL6.
Conjugation	Un-conjugated
Alternate Names	Ccl6; chemokine (C-C motif) ligand 6; Small-inducible cytokine A6; 23-95; Protein C10; MRP-1; C-C motif chemokine 6; c10; 22-95; Scya6

### Application Instructions

Application table	Application	Dilution
	IHC-P	0.5-1 µg/ml
	WB	0.1-0.5 µg/ml
Application Note	* The dilutions indicate recommended starting dilutions and the optimal dilutions or concentrations should be determined by the scientist.	

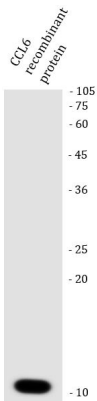
### Properties

Form	Liquid
Purification	Affinity purified
Buffer	0.2% Na <sub>2</sub> HPO <sub>4</sub> , 0.9% NaCl, 0.05% Sodium azide and 4% Trehalose.
Preservative	0.05% Sodium azide
Stabilizer	4% Trehalose
Concentration	0.5 mg/ml
Storage instruction	For continuous use, store undiluted antibody at 2-8°C for up to a week. For long-term storage, aliquot and store at -20°C or below. Storage in frost free freezers is not recommended. Avoid repeated freeze/thaw cycles. Suggest spin the vial prior to opening. The antibody solution should be gently mixed before use.
Note	For laboratory research only, not for drug, diagnostic or other use.

Bioinformation

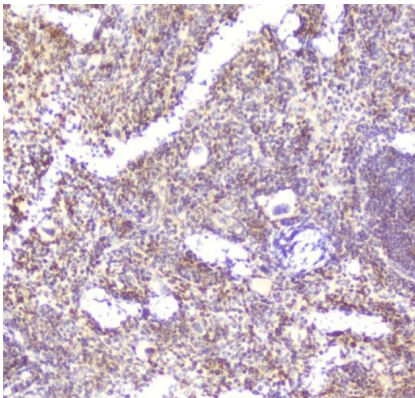
Gene Symbol	Ccl6
Gene Full Name	chemokine (C-C motif) ligand 6
Function	CCL6(22-95) and CCL6(23-95) are potent chemoattractants. [UniProt]
Calculated Mw	12 kDa

Images



ARG45738 anti-CCL6 antibody WB image

Western blot: CCL6 recombinant protein stained with ARG45738 anti-CCL6 antibody at 0.5 µg/ml dilution.



ARG45738 anti-CCL6 antibody IHC-P image

Immunohistochemistry: Mouse spleen stained with ARG45738 anti-CCL6 antibody at 2 µg/ml dilution.