

ARG45850 anti-Zebrafish mylpfa antibody

Package: 200 µl
Store at: -20°C

Summary

Product Description	Rabbit Polyclonal antibody recognizes mylpfa
Tested Reactivity	Zfish
Tested Application	IHC-P, WB
Host	Rabbit
Clonality	Polyclonal
Isotype	IgG
Target Name	mylpfa
Species	Zebrafish
Conjugation	Un-conjugated
Alternate Names	MYL11A; Myosin regulatory light chain 2, skeletal muscle isoform A;

Application Instructions

Application table	Application	Dilution
	IHC-P	2-5 µg/ml
	WB	0.1-0.5 µg/ml
Application Note	* The dilutions indicate recommended starting dilutions and the optimal dilutions or concentrations should be determined by the scientist.	

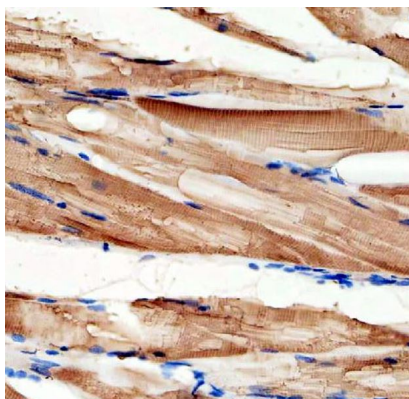
Properties

Form	Liquid
Purification	Affinity chromatography purified
Buffer	0.02M PBS, 0.02% Sodium azide and 50% Glycerol.
Preservative	0.02% Sodium azide
Stabilizer	50% Glycerol
Concentration	0.5 mg/ml
Storage instruction	For continuous use, store undiluted antibody at 2-8°C for up to a week. For long-term storage, aliquot and store at -20°C or below. Storage in frost free freezers is not recommended. Avoid repeated freeze/thaw cycles. Suggest spin the vial prior to opening. The antibody solution should be gently mixed before use.
Note	For laboratory research only, not for drug, diagnostic or other use.

Bioinformation

Gene Symbol	MYL11A
Gene Full Name	Myosin regulatory light chain 2, skeletal muscle isoform A
Function	Myosin regulatory subunit that plays a role to maintain muscle integrity during early development.. [UniProt]
Calculated Mw	19 kDa
PTM	Phosphoprotein. [UniProt]
Cellular Localization	Cytoplasm. [UniProt]

Images



ARG45850 anti-Zebrafish mylpfa antibody IHC-P image

Immunohistochemistry: Zebrafish skeletal muscle stained with ARG45850 anti-Zebrafish mylpfa antibody at 2 µg/ml dilution.