

ARG46252
anti-LASS6 / CERS6 antibodyPackage: 50 µg
Store at: -20°C

Summary

Product Description	Rabbit Polyclonal antibody recognizes LASS6 / CERS6
Tested Reactivity	Hu, Ms, Rat
Tested Application	IHC-P, WB
Host	Rabbit
Clonality	Polyclonal
Isotype	IgG
Target Name	LASS6 / CERS6
Species	Human
Immunogen	A 13 amino acid synthetic peptide within the last 50 amino acids of human LASS6 / CERS6.
Conjugation	Un-conjugated
Alternate Names	ceramide synthase 6 ; LASS6; CERS5; LASS6; Ceramide synthase 6; LAG1 longevity assurance homolog 6; CerS6

Application Instructions

Application table	Application	Dilution
	IHC-P	Assay-dependent
	WB	Assay-dependent
Application Note	* The dilutions indicate recommended starting dilutions and the optimal dilutions or concentrations should be determined by the scientist.	

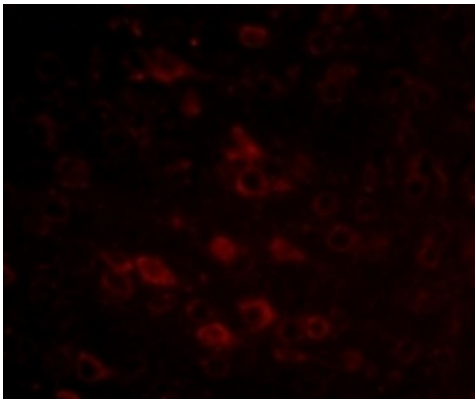
Properties

Form	Liquid
Purification	Affinity chromatography purified
Buffer	PBS and 0.02% Sodium azide.
Preservative	0.02% Sodium azide
Concentration	1 mg/ml
Storage instruction	For continuous use, store undiluted antibody at 2-8°C for up to a week. For long-term storage, aliquot and store at -302°C or below. Storage in frost free freezers is not recommended. Avoid repeated freeze/thaw cycles. Suggest spin the vial prior to opening. The antibody solution should be gently mixed before use.
Note	For laboratory research only, not for drug, diagnostic or other use.

Bioinformation

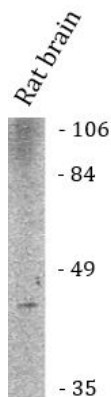
Gene Symbol	CERS6
Gene Full Name	ceramide synthase 6
Background	Enables sphingosine N-acyltransferase activity. Involved in ceramide biosynthetic process. Located in membrane. [provided by Alliance of Genome Resources, Jul 2025]
Function	Ceramide synthase that catalyzes the transfer of the acyl chain from acyl-CoA to a sphingoid base, with high selectivity toward palmitoyl-CoA (hexadecanoyl-CoA; C16:0-CoA). [UniProt]
Calculated Mw	45 kDa
PTM	Phosphoprotein; Glycoprotein; Acetylation. [UniProt]
Cellular Localization	Endoplasmic reticulum membrane. [UniProt]

Images



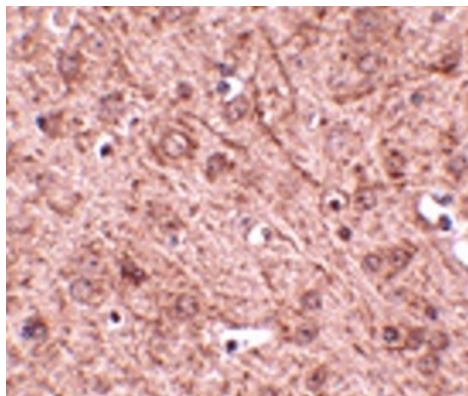
ARG46252 anti-LASS6 / CERS6 antibody ICC/IF image

Immunofluorescence: Mouse Brain stained with ARG46252 anti-LASS6 / CERS6 antibody.



ARG46252 anti-LASS6 / CERS6 antibody WB image

Western blot: Rat brain stained with ARG46252 anti-LASS6 / CERS6 antibody.



ARG46252 anti-LASS6 / CERS6 antibody IHC-P image

Immunohistochemistry: Mouse brain stained with ARG46252 anti-LASS6 / CERS6 antibody.