

ARG46302 anti-MYCT1 antibody

Package: 50 µg
Store at: -20°C

Summary

Product Description	Rabbit Polyclonal antibody recognizes MYCT1
Tested Reactivity	Hu, Ms, Rat
Tested Application	WB
Host	Rabbit
Clonality	Polyclonal
Isotype	IgG
Target Name	MYCT1
Species	Human
Immunogen	A 17 amino acid synthetic peptide within the last 50 amino acids of human MYCT1.
Conjugation	Un-conjugated
Alternate Names	myc target 1; MYCT1; MTLC; MTLC; MTMC1; Myc target protein 1; Myc target in myeloid cells protein 1

Application Instructions

Application table	Application	Dilution
	WB	Assay-dependent
Application Note	* The dilutions indicate recommended starting dilutions and the optimal dilutions or concentrations should be determined by the scientist.	

Properties

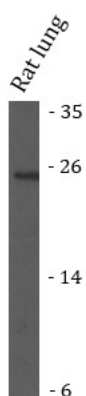
Form	Liquid
Purification	Affinity chromatography purified
Buffer	PBS and 0.02% Sodium azide.
Preservative	0.02% Sodium azide
Concentration	1 mg/ml
Storage instruction	For continuous use, store undiluted antibody at 2-8°C for up to a week. For long-term storage, aliquot and store at -352°C or below. Storage in frost free freezers is not recommended. Avoid repeated freeze/thaw cycles. Suggest spin the vial prior to opening. The antibody solution should be gently mixed before use.
Note	For laboratory research only, not for drug, diagnostic or other use.

Bioinformation

Gene Symbol	MYCT1
-------------	-------

Gene Full Name	myc target 1
Background	Predicted to act upstream of or within hematopoietic stem cell homeostasis. Located in nuclear body. [provided by Alliance of Genome Resources, Jul 2025]
Function	May regulate certain MYC target genes, MYC seems to be a direct upstream transcriptional activator. Does not seem to significantly affect growth cell capacity. Overexpression seems to mediate many of the known phenotypic features associated with MYC, including promotion of apoptosis, alteration of morphology, enhancement of anchorage-independent growth, tumorigenic conversion, promotion of genomic instability, and inhibition of hematopoietic differentiation (By similarity). [UniProt]
Calculated Mw	27 kDa
PTM	Phosphoprotein. [UniProt]
Cellular Localization	Nucleus. [UniProt]

Images



ARG46302 anti-MYCT1 antibody WB image

Western blot: Rat lung stained with ARG46302 anti-MYCT1 antibody.