

ARG46643 anti-WDR61 antibody

Package: 50 µg
Store at: -20°C

Summary

Product Description	Rabbit Polyclonal antibody recognizes WDR61
Tested Reactivity	Hu, Ms, Rat
Tested Application	IHC-P, WB
Host	Rabbit
Clonality	Polyclonal
Isotype	IgG
Target Name	WDR61
Species	Human
Immunogen	A 14 amino acid synthetic peptide within the last 50 amino acids of human WDR61.
Conjugation	Un-conjugated
Alternate Names	WDR61; WD repeat domain 61; WD repeat-containing protein 61; Meiotic recombination REC14 protein homolog; REC14; SKI8

Application Instructions

Application table	Application	Dilution
	IHC-P	Assay-dependent
	WB	Assay-dependent
Application Note	* The dilutions indicate recommended starting dilutions and the optimal dilutions or concentrations should be determined by the scientist.	
Observed Size	30 kDa	

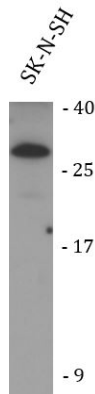
Properties

Form	Liquid
Purification	Affinity chromatography purified
Buffer	PBS and 0.02% Sodium azide.
Preservative	0.02% Sodium azide
Concentration	1 mg/ml
Storage instruction	For continuous use, store undiluted antibody at 2-8°C for up to a week. For long-term storage, aliquot and store at -693°C or below. Storage in frost free freezers is not recommended. Avoid repeated freeze/thaw cycles. Suggest spin the vial prior to opening. The antibody solution should be gently mixed before use.
Note	For laboratory research only, not for drug, diagnostic or other use.

Bioinformation

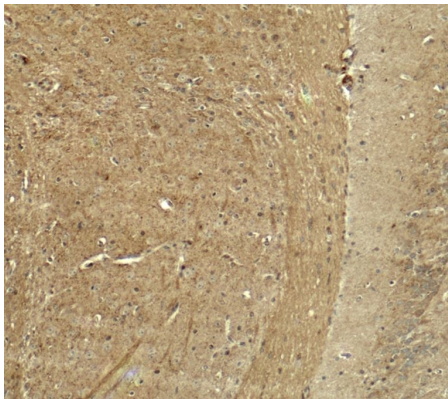
Gene Symbol	WDR61
Gene Full Name	WD repeat domain 61
Background	WDR61 is a subunit of the human PAF and SKI complexes, which function in transcriptional regulation and are involved in events downstream of RNA synthesis, such as RNA surveillance (Zhu et al., 2005 [PubMed 16024656]).[supplied by OMIM, Mar 2008]
Function	Component of the PAF1 complex (PAF1C) which has multiple functions during transcription by RNA polymerase II and is implicated in regulation of development and maintenance of embryonic stem cell pluripotency. [UniProt]
Calculated Mw	34 kDa
PTM	Acetylation. [UniProt]
Cellular Localization	Cytoplasm; Nucleus. [UniProt]

Images



ARG46643 anti-WDR61 antibody WB image

Western blot: SK-N-SH stained with ARG46643 anti-WDR61 antibody.



ARG46643 anti-WDR61 antibody IHC-P image

Immunohistochemistry: Mouse brain stained with ARG46643 anti-WDR61 antibody.