

ARG46708 anti-PGC1 alpha antibody [AOBC-16]

Package: 50 µl
Store at: -20°C

Summary

Product Description	Rabbit Monoclonal antibody [AOBC-16] recognizes PGC1 alpha
Tested Reactivity	Hu, Ms, Rat
Tested Application	WB
Host	Rabbit
Clonality	Monoclonal
Clone	AOBC-16
Isotype	IgG
Target Name	PGC1 alpha
Species	Human
Immunogen	Synthetic peptide of human PGC1 alpha.
Conjugation	Un-conjugated
Alternate Names	PPARGC1A; PPARG Coactivator 1 Alpha; PGC1A; PGC1; PGC-1alpha; PPARGC1; Peroxisome Proliferator-Activated Receptor Gamma Coactivator 1-Alpha; PPARGgamma Coactivator 1alpha; PPARGC-1-Alpha; PGC-1-Alpha; LEM6; Peroxisome Proliferative Activated Receptor, Gamma, Coactivator 1, Alpha; Peroxisome Proliferator-Activated Receptor Gamma, Coactivator 1 Alpha; Peroxisome Proliferative Activated Receptor, Gamma, Coactivator 1; PPAR Gamma Coactivator Variant Form; PPAR-Gamma Coactivator 1-Alpha; Ligand Effect Modulator-6; Ligand Effect Modulator 6; PPARGC1alpha; PGC-1(Alpha); L-PGC-1alpha; PPARGC1α; PPARGC1A; PGC-1v;

Application Instructions

Application table	Application	Dilution
	WB	1:500 - 1:2000
Application Note	* The dilutions indicate recommended starting dilutions and the optimal dilutions or concentrations should be determined by the scientist.	

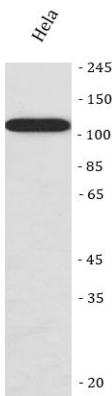
Properties

Form	Liquid
Purification	Affinity chromatography purified
Buffer	PBS, 150mM NaCl, 0.02% sodium azide, 50% glycerol and 0.4-0.5 mg/ml BSA.
Preservative	0.02% Sodium azide
Stabilizer	50% glycerol and 0.4-0.5 mg/ml BSA
Storage instruction	For continuous use, store undiluted antibody at 2-8°C for up to a week. For long-term storage, aliquot and store at -20°C or below. Storage in frost free freezers is not recommended. Avoid repeated freeze/thaw cycles. Suggest spin the vial prior to opening. The antibody solution should be gently mixed before use.

Bioinformation

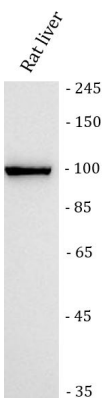
Gene Symbol	PPARGC1A
Gene Full Name	PPARG Coactivator 1 Alpha
Background	The protein encoded by this gene is a transcriptional coactivator that regulates the genes involved in energy metabolism. This protein interacts with PPARGgamma, which permits the interaction of this protein with multiple transcription factors. This protein can interact with, and regulate the activities of, cAMP response element binding protein (CREB) and nuclear respiratory factors (NRFs). It provides a direct link between external physiological stimuli and the regulation of mitochondrial biogenesis, and is a major factor that regulates muscle fiber type determination. This protein may be also involved in controlling blood pressure, regulating cellular cholesterol homoeostasis, and the development of obesity. [provided by RefSeq, Jul 2008]
Function	Transcriptional coactivator for steroid receptors and nuclear receptors. [UniProt]
Calculated Mw	91 kDa
PTM	Acetylation; Phosphoprotein; Ubl conjugation. [UniProt]
Cellular Localization	Cytoplasm; Nucleus. [UniProt]

Images



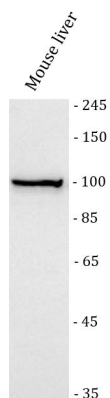
ARG46708 anti-PGC1 alpha antibody [AOBC-16] WB image

Western blot: HeLa stained with ARG46708 anti-PGC1 alpha antibody [AOBC-16].



ARG46708 anti-PGC1 alpha antibody [AOBC-16] WB image

Western blot: Rat liver stained with ARG46708 anti-PGC1 alpha antibody [AOBC-16].



ARG46708 anti-PGC1 alpha antibody [AOBC-16] WB image

Western blot: Mouse liver stained with ARG46708 anti-PGC1 alpha antibody [AOBC-16].