

ARG46723 anti-ZBP1 antibody

Package: 50 µg
Store at: -20°C

Summary

Product Description	Rabbit Polyclonal antibody recognizes ZBP1
Tested Reactivity	Hu, Ms, Rat
Tested Application	ICC/IF, IHC-P, WB
Host	Rabbit
Clonality	Polyclonal
Isotype	IgG
Target Name	ZBP1
Species	Human
Immunogen	Synthetic peptide corresponding to an 18 amino acid sequence in the C-terminal region of human ZBP1.
Conjugation	Un-conjugated
Alternate Names	ZBP1; Z-DNA Binding Protein 1; DLM1; DAI; C20orf183; DLM-1; Tumor Stroma And Activated Macrophage Protein DLM-1; DNA-Dependent Activator Of IRFs; Z-DNA-Binding Protein 1; DJ718J7.3; DNA-Dependent Activator Of IFN-Regulatory Factors; Chromosome 20 Open Reading Frame 183

Application Instructions

Application table	Application	Dilution
	ICC/IF	10 - 20 µg/ml
	IHC-P	1 - 5 µg/ml
	WB	1 - 2 µg/ml
Application Note	* The dilutions indicate recommended starting dilutions and the optimal dilutions or concentrations should be determined by the scientist.	
Observed Size	44 kDa	

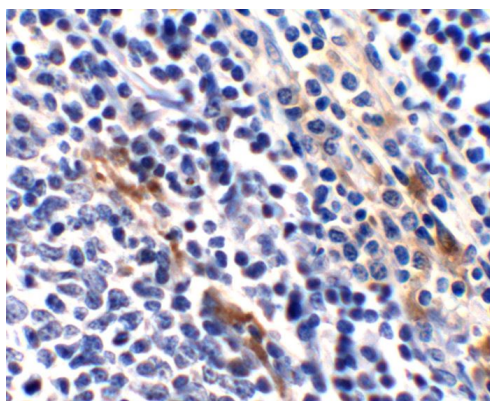
Properties

Form	Liquid
Purification	Affinity chromatography purified
Buffer	PBS and 0.02% sodium azide
Preservative	0.02% sodium azide
Concentration	1 mg/ml
Storage instruction	For continuous use, store undiluted antibody at 2-8°C for up to a week. For long-term storage, aliquot and store at -20°C or below. Storage in frost free freezers is not recommended. Avoid repeated freeze/thaw cycles. Suggest spin the vial prior to opening. The antibody solution should be gently mixed before use.

Bioinformation

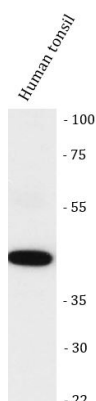
Gene Symbol	ZBP1
Gene Full Name	Z-DNA Binding Protein 1
Background	This gene encodes a Z-DNA binding protein. The encoded protein plays a role in the innate immune response by binding to foreign DNA and inducing type-I interferon production. Alternatively spliced transcript variants encoding multiple isoforms have been observed for this gene. [provided by RefSeq, Dec 2011]
Function	Key innate sensor that recognizes and binds Z-RNA structures, which are produced by a number of viruses, such as herpesvirus, orthomyxovirus or flavivirus, and triggers different forms of cell death. [UniProt]
Calculated Mw	46 kDa
PTM	Phosphorylated. [UniProt]
Cellular Localization	Cytoplasm; Nucleus. [UniProt]

Images



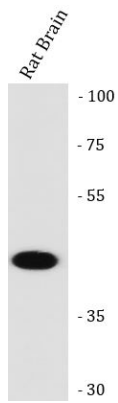
ARG46723 anti-ZBP1 antibody IHC-P image

Immunohistochemistry: Human tonsil stained with ARG46723 anti-ZBP1 antibody.



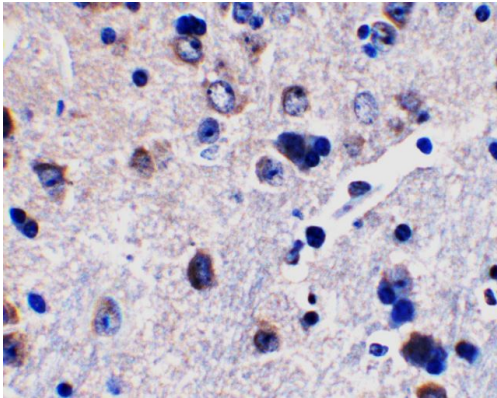
ARG46723 anti-ZBP1 antibody WB image

Western blot: Human tonsil stained with ARG46723 anti-ZBP1 antibody.



ARG46723 anti-ZBP1 antibody WB image

Western blot: Rat brain stained with ARG46723 anti-ZBP1 antibody.



ARG46723 anti-ZBP1 antibody IHC-P image

Immunohistochemistry: Mouse brain stained with ARG46723 anti-ZBP1 antibody.



ARG46723 anti-ZBP1 antibody WB image

Western blot: Mouse brain stained with ARG46723 anti-ZBP1 antibody.