

ARG46724 anti-ZBP1 antibody [3H02]

Package: 50 µl
Store at: -20°C

Summary

Product Description	Rabbit Monoclonal antibody [3H02] recognizes ZBP1
Tested Reactivity	Hu
Tested Application	ICC/IF, IHC-P, IP, WB
Host	Rabbit
Clonality	Monoclonal
Clone	3H02
Isotype	IgG
Target Name	ZBP1
Species	Human
Immunogen	Recombinant protein human ZBP1. MAQAPADPGREGHLEQRILQVLTEAGSPVKLAQLVKECQAPKRELNQVLYRMKKELKVSILTSPA TWCLGGTDPEGEGPAELALSSPAERPQQHAATIPETPGPQFSQQREEDIYRFLKDNGPQRALV IAQALGMRTAKDVNRDLYRMKSRHLLDMDEQSKAWTIYRPEDS
Conjugation	Un-conjugated
Alternate Names	ZBP1; Z-DNA Binding Protein 1; DLM1; DAI; C20orf183; DLM-1; Tumor Stroma And Activated Macrophage Protein DLM-1; DNA-Dependent Activator Of IRFs; Z-DNA-Binding Protein 1; DJ718J7.3; DNA-Dependent Activator Of IFN-Regulatory Factors; Chromosome 20 Open Reading Frame 183

Application Instructions

Application table	Application	Dilution
	ICC/IF	1:100 - 1:400
	IHC-P	1:200 - 1:800
	IP	0.5 µg - 4 µg antibody for 500 µg - 700 µg extracts of whole cells
	WB	1:10000 - 1:60000
Application Note	* The dilutions indicate recommended starting dilutions and the optimal dilutions or concentrations should be determined by the scientist.	
Observed Size	44 kDa; 58 kDa	

Properties

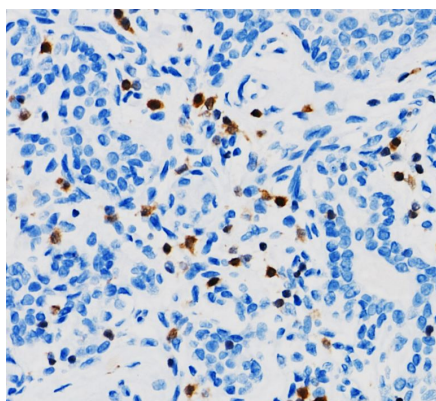
Form	Liquid
Purification	Affinity chromatography purified
Buffer	PBS, 0.09% sodium azide, 50% glycerol and 0.5% BSA
Preservative	0.09% sodium azide

Stabilizer	50% glycerol and 0.5% BSA
Storage instruction	For continuous use, store undiluted antibody at 2-8°C for up to a week. For long-term storage, aliquot and store at -20°C or below. Storage in frost free freezers is not recommended. Avoid repeated freeze/thaw cycles. Suggest spin the vial prior to opening. The antibody solution should be gently mixed before use.
Note	For laboratory research only, not for drug, diagnostic or other use.

Bioinformation

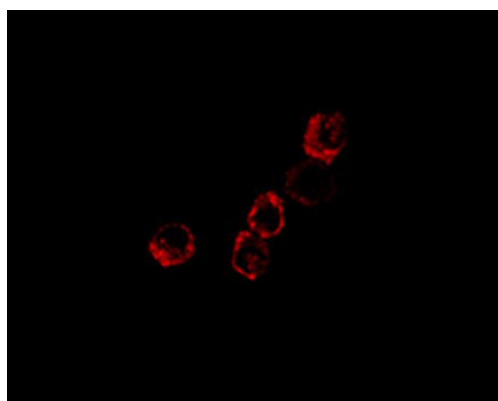
Gene Symbol	ZBP1
Gene Full Name	Z-DNA Binding Protein 1
Background	This gene encodes a Z-DNA binding protein. The encoded protein plays a role in the innate immune response by binding to foreign DNA and inducing type-I interferon production. Alternatively spliced transcript variants encoding multiple isoforms have been observed for this gene. [provided by RefSeq, Dec 2011]
Function	Key innate sensor that recognizes and binds Z-RNA structures, which are produced by a number of viruses, such as herpesvirus, orthomyxovirus or flavivirus, and triggers different forms of cell death. [UniProt]
Calculated Mw	46 kDa
PTM	Phosphorylated. [UniProt]
Cellular Localization	Cytoplasm; Nucleus. [UniProt]

Images



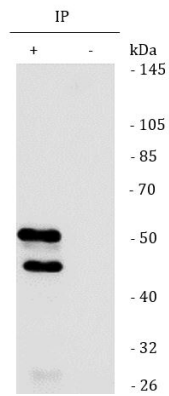
ARG46724 anti-ZBP1 antibody [3H02] IHC-P image

Immunohistochemistry: Human breast stained with ARG46724 anti-ZBP1 antibody [3H02].



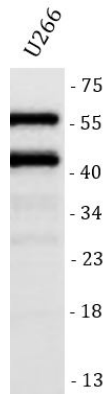
ARG46724 anti-ZBP1 antibody [3H02] ICC/IF image

Immunofluorescence: U266 stained with ARG46724 anti-ZBP1 antibody [3H02].



ARG46724 anti-ZBP1 antibody [3H02] IP image

Immunoprecipitation: U266 lysate immunoprecipitated with 1 μ g ARG46724 anti-ZBP1 antibody [3H02].



ARG46724 anti-ZBP1 antibody [3H02] WB image

Western blot: U266 stained with ARG46724 anti-ZBP1 antibody [3H02].