

ARG46750 anti-TPD52 antibody

Package: 100 µl
Store at: -20°C

Summary

| | |
|---------------------|---|
| Product Description | Rabbit Polyclonal antibody recognizes TPD52 |
| Tested Reactivity | Hu, Ms |
| Tested Application | WB |
| Host | Rabbit |
| Clonality | Polyclonal |
| Isotype | IgG |
| Target Name | TPD52 |
| Species | Human |
| Immunogen | KLH-conjugated synthetic peptide derived from Human TPD52 |
| Conjugation | Un-conjugated |
| Alternate Names | PrLZ; Tumor protein D52; PC-1; Protein N8; hD52; N8L; D52 |

Application Instructions

| Application table | Application | Dilution |
|-------------------|-------------|----------|
| | WB | ~1:2000 |

Application Note * The dilutions indicate recommended starting dilutions and the optimal dilutions or concentrations should be determined by the scientist.

Properties

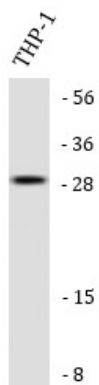
| | |
|---------------------|--|
| Form | Liquid |
| Purification | Protein A & peptide affinity purification |
| Buffer | PBS and 0.09% sodium azide |
| Preservative | 0.09% sodium azide |
| Storage instruction | For continuous use, store undiluted antibody at 2-8°C for up to a week. For long-term storage, aliquot and store at -20°C or below. Storage in frost free freezers is not recommended. Avoid repeated freeze/thaw cycles. Suggest spin the vial prior to opening. The antibody solution should be gently mixed before use. |
| Note | For laboratory research only, not for drug, diagnostic or other use. |

Bioinformation

| | |
|----------------|-------------------|
| Gene Symbol | TPD52 |
| Gene Full Name | tumor protein D52 |

Research Area Cancer antibody; Immune System antibody
Calculated Mw 24 kDa

Images



ARG46750 anti-TPD52 antibody WB image

Western blot: THP-1 stained with ARG46750 anti-TPD52 antibody.



ARG46750 anti-TPD52 antibody WB image

Western blot: Mouse kidney stained with ARG46750 anti-TPD52 antibody.