

ARG46751 anti-GCLM antibody

Package: 100 µl
Store at: -20°C

Summary

Product Description	Rabbit Polyclonal antibody recognizes GCLM
Tested Reactivity	Hu, Ms
Tested Application	FACS, ICC/IF, IHC-P, WB
Host	Rabbit
Clonality	Polyclonal
Isotype	IgG
Target Name	GCLM
Species	Human
Immunogen	KLH-conjugated synthetic peptide between 246-274 amino acids from the C-terminal region of Human IREB2 / IRP2
Conjugation	Un-conjugated
Alternate Names	GCS light chain; Gamma-ECS regulatory subunit; Glutamate--cysteine ligase regulatory subunit; GLCLR; Gamma-glutamylcysteine synthetase regulatory subunit; Glutamate--cysteine ligase modifier subunit

Application Instructions

Application table	Application	Dilution
	FACS	1:10-1:50
	ICC/IF	1:10-1:50
	IHC-P	~1:25
	WB	~1:8000

Application Note * The dilutions indicate recommended starting dilutions and the optimal dilutions or concentrations should be determined by the scientist.

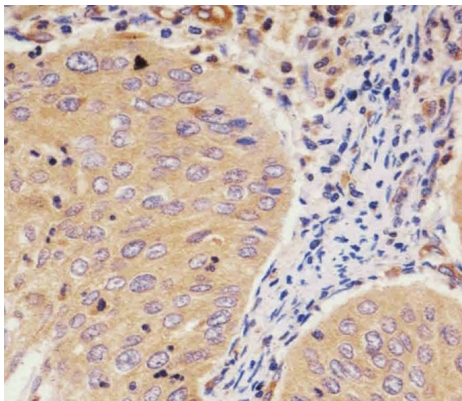
Properties

Form	Liquid
Purification	Affinity purification with immunogen
Buffer	PBS and 0.09% sodium azide
Preservative	0.09% sodium azide
Storage instruction	For continuous use, store undiluted antibody at 2-8°C for up to a week. For long-term storage, aliquot and store at -20°C or below. Storage in frost free freezers is not recommended. Avoid repeated freeze/thaw cycles. Suggest spin the vial prior to opening. The antibody solution should be gently mixed before use.
Note	For laboratory research only, not for drug, diagnostic or other use.

Bioinformation

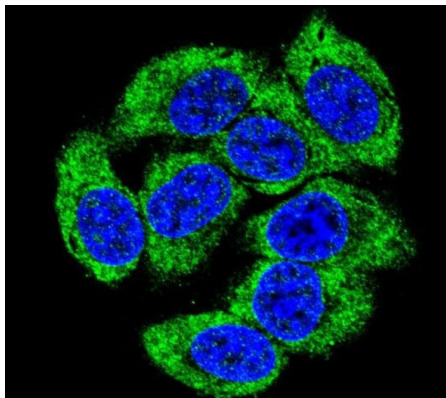
Gene Symbol	GCLM
Gene Full Name	glutamate-cysteine ligase, modifier subunit
Background	Glutamate-cysteine ligase, also known as gamma-glutamylcysteine synthetase, is the first rate limiting enzyme of glutathione synthesis. The enzyme consists of two subunits, a heavy catalytic subunit and a light regulatory subunit. Gamma glutamylcysteine synthetase deficiency has been implicated in some forms of hemolytic anemia. Alternative splicing results in multiple transcript variants encoding different isoforms. [provided by RefSeq, Apr 2015]
Calculated Mw	31 kDa

Images



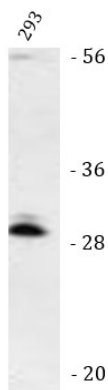
ARG46751 anti-GCLM antibody IHC-P image

Immunohistochemistry: Human cervical carcinoma stained with ARG46751 anti-GCLM antibody.



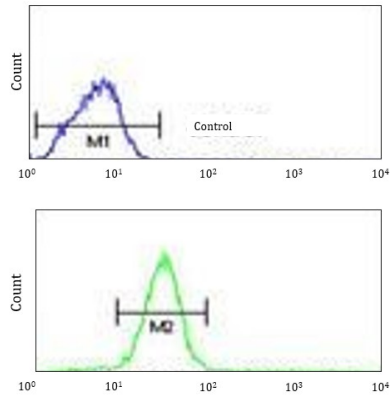
ARG46751 anti-GCLM antibody ICC/IF image

Immunofluorescence: 293 stained with ARG46751 anti-GCLM antibody at Abcepta (Abgent) dilution.



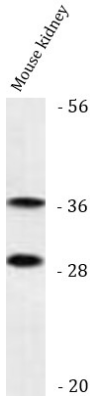
ARG46751 anti-GCLM antibody WB image

Western blot: 293 stained with ARG46751 anti-GCLM antibody.



ARG46751 anti-GCLM antibody FACS image

Flow Cytometry: 293 stained with ARG46751 anti-GCLM antibody.



ARG46751 anti-GCLM antibody WB image

Western blot: Mouse kidney stained with ARG46751 anti-GCLM antibody.