

ARG46753 anti-GCLM antibody

Package: 50 µl
Store at: -20°C

Summary

Product Description	Rabbit Polyclonal antibody recognizes GCLM
Tested Reactivity	Hu, Ms, Rat
Host	Rabbit
Clonality	Polyclonal
Isotype	IgG
Target Name	GCLM
Immunogen	Recombinant protein
Conjugation	Un-conjugated
Alternate Names	GCS light chain; Gamma-ECS regulatory subunit; Glutamate--cysteine ligase regulatory subunit; GLCLR; Gamma-glutamylcysteine synthetase regulatory subunit; Glutamate--cysteine ligase modifier subunit

Application Instructions

Application Note	* The dilutions indicate recommended starting dilutions and the optimal dilutions or concentrations should be determined by the scientist.
Observed Size	31 kDa

Properties

Form	Liquid
Purification	Affinity purification with immunogen
Buffer	PBS, 50% Glycerol, Proclin 300 or sodium azide
Preservative	Proclin 300 or sodium azide
Stabilizer	50% Glycerol
Storage instruction	For continuous use, store undiluted antibody at 2-8°C for up to a week. For long-term storage, aliquot and store at -20°C or below. Storage in frost free freezers is not recommended. Avoid repeated freeze/thaw cycles. Suggest spin the vial prior to opening. The antibody solution should be gently mixed before use.
Note	For laboratory research only, not for drug, diagnostic or other use.

Bioinformation

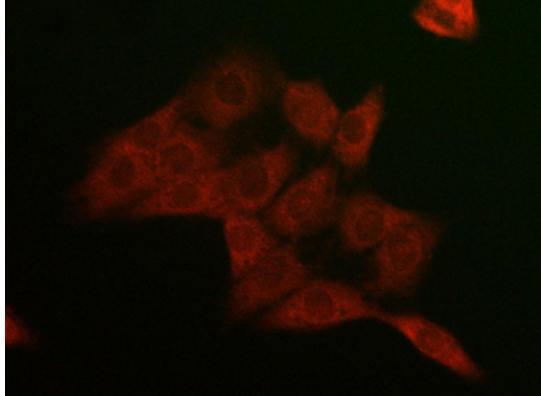
Gene Symbol	GCLM
Gene Full Name	glutamate-cysteine ligase, modifier subunit
Background	Glutamate-cysteine ligase, also known as gamma-glutamylcysteine synthetase, is the first rate limiting enzyme of glutathione synthesis. The enzyme consists of two subunits, a heavy catalytic subunit and a

light regulatory subunit. Gamma glutamylcysteine synthetase deficiency has been implicated in some forms of hemolytic anemia. Alternative splicing results in multiple transcript variants encoding different isoforms. [provided by RefSeq, Apr 2015]

Calculated Mw

31 kDa

Images



ARG46753 anti-GCLM antibody ICC/IF image

Immunofluorescence: PC-12 stained with ARG46753 anti-GCLM antibody at Abclonal dilution.



ARG46753 anti-GCLM antibody WB image

Western blot: HeLa stained with ARG46753 anti-GCLM antibody.



ARG46753 anti-GCLM antibody WB image

Western blot: Rat kidney stained with ARG46753 anti-GCLM antibody.

ARG46753 anti-GCLM antibody WB image

Western blot: Mouse spleen stained with ARG46753 anti-GCLM antibody.

