

ARG51025 anti-JunB antibody

Package: 100 µl, 50 µl
Store at: -20°C

Summary

Product Description	Rabbit Polyclonal antibody recognizes JunB
Tested Reactivity	Hu, Ms, Rat
Tested Application	ICC/IF, IHC-P
Host	Rabbit
Clonality	Polyclonal
Isotype	IgG
Target Name	JunB
Species	Human
Immunogen	Peptide sequence around aa.77~81 (G-A-S-L-K) derived from Human JunB.
Conjugation	Un-conjugated
Alternate Names	AP-1; Transcription factor jun-B

Application Instructions

Application table	Application	Dilution
	ICC/IF	1:100 - 1:200
	IHC-P	1:50 - 1:100
Application Note	* The dilutions indicate recommended starting dilutions and the optimal dilutions or concentrations should be determined by the scientist.	

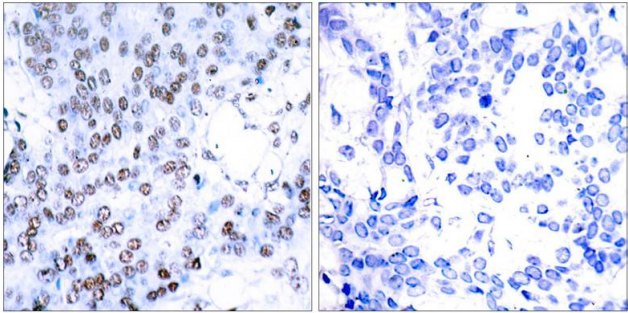
Properties

Form	Liquid
Purification	Antibodies were produced by immunizing rabbits with KLH-conjugated synthetic peptide. Antibodies were purified by affinity-chromatography using epitope-specific peptide.
Buffer	PBS (without Mg2+ and Ca2+, pH 7.4), 150mM NaCl, 0.02% Sodium azide and 50% Glycerol.
Preservative	0.02% Sodium azide
Stabilizer	50% Glycerol
Concentration	1 mg/ml
Storage instruction	For continuous use, store undiluted antibody at 2-8°C for up to a week. For long-term storage, aliquot and store at -20°C. Storage in frost free freezers is not recommended. Avoid repeated freeze/thaw cycles. Suggest spin the vial prior to opening. The antibody solution should be gently mixed before use.
Note	For laboratory research only, not for drug, diagnostic or other use.

Bioinformation

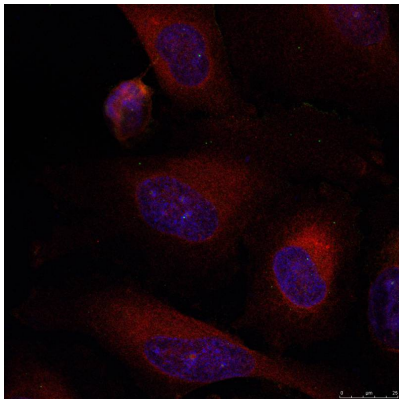
Gene Symbol	JUNB
Gene Full Name	jun B proto-oncogene
Background	Transcription factor involved in regulating gene activity following the primary growth factor response. Binds to the DNA sequence 5'-TGA[CG]TCA-3'.
Function	Transcription factor involved in regulating gene activity following the primary growth factor response. Binds to the DNA sequence 5'-TGA[CG]TCA-3'. [UniProt]
Research Area	Gene Regulation antibody
Calculated Mw	36 kDa
PTM	Ubiquitinated by ITCH, leading to its degradation.

Images



ARG51025 anti-JunB antibody IHC-P image

Immunohistochemistry: paraffin-embedded human breast carcinoma tissue stained with anti-JunB antibody ARG51025 (left) or the same antibody preincubated with blocking peptide (right).



ARG51025 anti-JunB antibody ICC/IF image

Immunofluorescence: methanol-fixed HeLa cells stained with anti-JunB antibody ARG51025.