

ARG51049 anti-CREB antibody

Package: 100 µl, 50 µl
Store at: -20°C

Summary

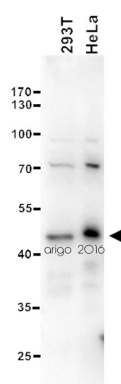
Product Description	Rabbit Polyclonal antibody recognizes CREB
Tested Reactivity	Hu, Ms, Rat
Tested Application	IHC-P, WB
Host	Rabbit
Clonality	Polyclonal
Isotype	IgG
Target Name	CREB
Species	Human
Immunogen	Peptide sequence around aa. 131~135 (R-P-S-Y-R) derived from Human CREB.
Conjugation	Un-conjugated
Alternate Names	Cyclic AMP-responsive element-binding protein 1; CREB; CREB-1; cAMP-responsive element-binding protein 1

Application Instructions

Application table	Application	Dilution
	IHC-P	1:50 - 1:100
	WB	1:500 - 1:1000
Application Note	* The dilutions indicate recommended starting dilutions and the optimal dilutions or concentrations should be determined by the scientist.	

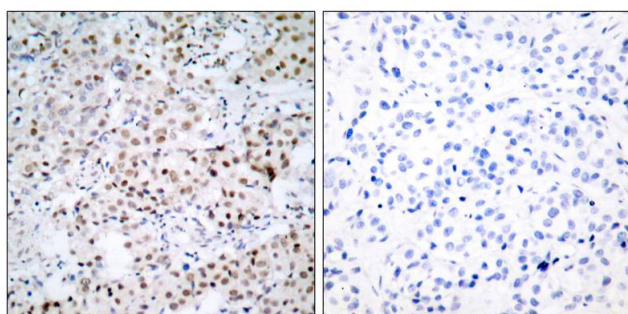
Properties

Form	Liquid
Purification	Antibodies were produced by immunizing rabbits with KLH-conjugated synthetic peptide. Antibodies were purified by affinity-chromatography using epitope-specific peptide.
Buffer	PBS (without Mg2+ and Ca2+, pH 7.4), 150mM NaCl, 0.02% Sodium azide and 50% Glycerol.
Preservative	0.02% Sodium azide
Stabilizer	50% Glycerol
Concentration	1 mg/ml
Storage instruction	For continuous use, store undiluted antibody at 2-8°C for up to a week. For long-term storage, aliquot and store at -20°C. Storage in frost free freezers is not recommended. Avoid repeated freeze/thaw cycles. Suggest spin the vial prior to opening. The antibody solution should be gently mixed before use.
Note	For laboratory research only, not for drug, diagnostic or other use.



ARG51049 anti-CREB antibody WB image

Western blot: 20 µg of 293T and HeLa cell lysates stained with ARG51049 anti-CREB antibody at 1:500 dilution.



ARG51049 anti-CREB antibody IHC-P image

Immunohistochemistry: paraffin-embedded human breast carcinoma tissue stained with anti-CREB antibody ARG51049 (left) or the same antibody preincubated with blocking peptide (right).