

ARG51531 anti-JunB phospho (Ser259) antibody

Package: 100 µl, 50 µl
Store at: -20°C

Summary

Product Description	Rabbit Polyclonal antibody recognizes JunB phospho (Ser259)
Tested Reactivity	Hu, Ms, Rat
Tested Application	IHC-P, WB
Host	Rabbit
Clonality	Polyclonal
Isotype	IgG
Target Name	JunB
Species	Human
Immunogen	Peptide sequence around phosphorylation site of serine 259 (P-V-S(p)-P-I) derived from Human JunB.
Conjugation	Un-conjugated
Alternate Names	AP-1; Transcription factor jun-B

Application Instructions

Application table	Application	Dilution
	IHC-P	1:50 - 1:100
	WB	1:500 - 1:1000
Application Note	* The dilutions indicate recommended starting dilutions and the optimal dilutions or concentrations should be determined by the scientist.	

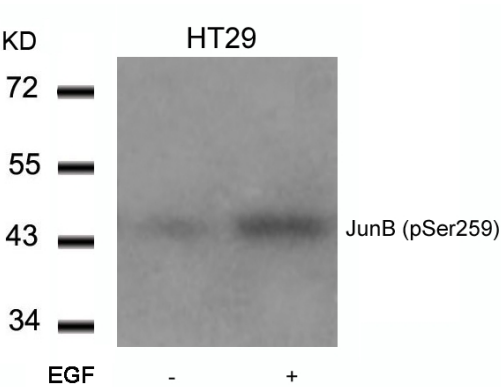
Properties

Form	Liquid
Purification	Antibodies were produced by immunizing rabbits with KLH-conjugated synthetic phosphopeptide. Antibodies were purified by affinity-chromatography using epitope-specific phosphopeptide. In addition, non-phospho specific antibodies were removed by chromatography using non-phosphopeptide.
Buffer	PBS (without Mg2+ and Ca2+, pH 7.4), 150mM NaCl, 0.02% Sodium azide and 50% Glycerol.
Preservative	0.02% Sodium azide
Stabilizer	50% Glycerol
Concentration	1 mg/ml
Storage instruction	For continuous use, store undiluted antibody at 2-8°C for up to a week. For long-term storage, aliquot and store at -20°C. Storage in frost free freezers is not recommended. Avoid repeated freeze/thaw cycles. Suggest spin the vial prior to opening. The antibody solution should be gently mixed before use.
Note	For laboratory research only, not for drug, diagnostic or other use.

Bioinformation

Gene Symbol	JUNB
Gene Full Name	jun B proto-oncogene
Background	Transcription factor involved in regulating gene activity following the primary growth factor response. Binds to the DNA sequence 5'-TGA[CG]TCA-3'.
Function	Transcription factor involved in regulating gene activity following the primary growth factor response. Binds to the DNA sequence 5'-TGA[CG]TCA-3'. [UniProt]
Highlight	Related Antibody Duos and Panels: ARG30207 Phospho JunB Antibody Duo (Total, pSer259) Related products: JunB antibodies ; JunB Duos / Panels ; Anti-Rabbit IgG secondary antibodies ; Related news: JunB as a novel gate keeper for prostate cancer progression
Research Area	Gene Regulation antibody
Calculated Mw	36 kDa
PTM	Ubiquitinated by ITCH, leading to its degradation.

Images



ARG51531 anti-JunB phospho (Ser259) antibody WB image

Western blot: Extracts from HT29 cells untreated or treated with EGF stained with ARG51531 anti-JunB phospho (Ser259) antibody.

