

## ARG51585 anti-G3BP1 phospho (Ser232) antibody

Package: 100 µl, 50 µl  
Store at: -20°C

### Summary

Product Description	Rabbit Polyclonal antibody recognizes G3BP1 phospho (Ser232)
Tested Reactivity	Hu
Tested Application	ICC/IF, IHC-P, WB
Host	Rabbit
Clonality	Polyclonal
Isotype	IgG
Target Name	G3BP1
Species	Human
Immunogen	Peptide sequence around phosphorylation site of serine 232 (S-S-S(p)-P-A) derived from Human G3BP-1.
Conjugation	Un-conjugated
Alternate Names	G3BP; hDH VIII; G3BP-1; GAP SH3 domain-binding protein 1; EC 3.6.4.13; EC 3.6.4.12; HDH-VIII; ATP-dependent DNA helicase VIII; Ras GTPase-activating protein-binding protein 1

### Application Instructions

Application table	Application	Dilution
	ICC/IF	1:100 - 1:200
	IHC-P	1:50 - 1:100
	WB	1:500 - 1:1000
Application Note	* The dilutions indicate recommended starting dilutions and the optimal dilutions or concentrations should be determined by the scientist.	

### Properties

Form	Liquid
Purification	Antibodies were produced by immunizing rabbits with KLH-conjugated synthetic phosphopeptide. Antibodies were purified by affinity-chromatography using epitope-specific phosphopeptide. In addition, non-phospho specific antibodies were removed by chromatography using non-phosphopeptide.
Buffer	PBS (without Mg <sup>2+</sup> and Ca <sup>2+</sup> , pH 7.4), 150mM NaCl, 0.02% Sodium azide and 50% Glycerol.
Preservative	0.02% Sodium azide
Stabilizer	50% Glycerol
Concentration	1 mg/ml
Storage instruction	For continuous use, store undiluted antibody at 2-8°C for up to a week. For long-term storage, aliquot

and store at -20°C. Storage in frost free freezers is not recommended. Avoid repeated freeze/thaw cycles. Suggest spin the vial prior to opening. The antibody solution should be gently mixed before use.

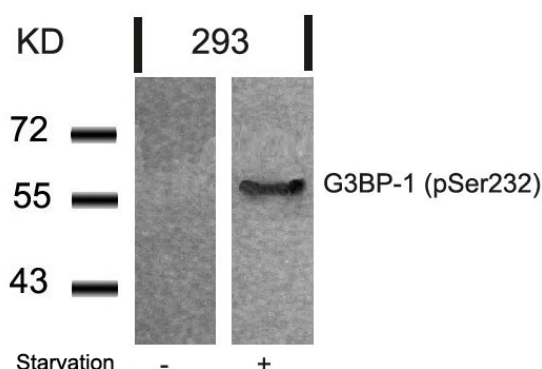
#### Note

For laboratory research only, not for drug, diagnostic or other use.

## Bioinformation

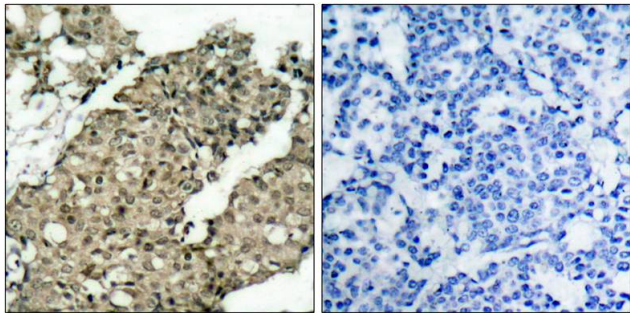
Database links	<a href="#">GeneID: 10146 Human</a> <a href="#">Swiss-port # Q13283 Human</a>
Gene Symbol	G3BP1
Gene Full Name	GTPase activating protein (SH3 domain) binding protein 1
Background	May be a regulated effector of stress granule assembly. Phosphorylation-dependent sequence-specific endoribonuclease in vitro. Cleaves exclusively between cytosine and adenine and cleaves MYC mRNA preferentially at the 3'-UTR. ATP- and magnesium-dependent helicase. Unwinds preferentially partial DNA and RNA duplexes having a 17 bp annealed portion and either a hanging 3' tail or hanging tails at both 5'- and 3'-ends. Unwinds DNA/DNA, RNA/DNA, and RNA/RNA substrates with comparable efficiency. Acts unidirectionally by moving in the 5' to 3' direction along the bound single-stranded DNA.
Function	May be a regulated effector of stress granule assembly. Phosphorylation-dependent sequence-specific endoribonuclease in vitro. Cleaves exclusively between cytosine and adenine and cleaves MYC mRNA preferentially at the 3'-UTR. ATP- and magnesium-dependent helicase. Unwinds preferentially partial DNA and RNA duplexes having a 17 bp annealed portion and either a hanging 3' tail or hanging tails at both 5'- and 3'-ends. Unwinds DNA/DNA, RNA/DNA, and RNA/RNA substrates with comparable efficiency. Acts unidirectionally by moving in the 5' to 3' direction along the bound single-stranded DNA. [UniProt]
Research Area	Gene Regulation antibody
Calculated Mw	52 kDa
PTM	Phosphorylated exclusively on serine residues. Hyperphosphorylated in quiescent fibroblasts. Hypophosphorylation leads to a decrease in endoribonuclease activity (By similarity). RASA1-dependent phosphorylation of Ser-149 induces a conformational change that prevents self-association. Dephosphorylation after HRAS activation is required for stress granule assembly. Ser-149 phosphorylation induces partial nuclear localization. Arg-435 is dimethylated, probably to asymmetric dimethylarginine.

## Images



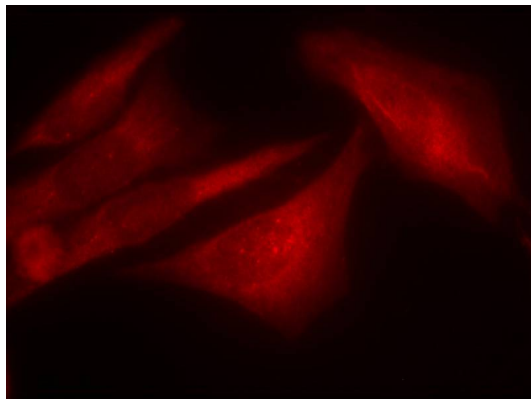
ARG51585 anti-G3BP1 phospho (Ser232) antibody WB image

Western blot: Extracts from 293 cells untreated or treated with starvation stained with ARG51585 anti-G3BP1 phospho (Ser232) antibody.



ARG51585 anti-G3BP1 phospho (Ser232) antibody IHC-P image

Immunohistochemistry: Paraffin-embedded Human breast carcinoma tissue stained with ARG51585 anti-G3BP1 phospho (Ser232) antibody (left) or the same antibody preincubated with blocking peptide (right).



ARG51585 anti-G3BP1 phospho (Ser232) antibody ICC/IF image

Immunofluorescence: methanol-fixed HeLa cells stained with ARG51585 anti-G3BP1 phospho (Ser232) antibody.