

ARG51750 anti-NF2 / Merlin phospho (Ser518) antibody

Package: 100 µl, 50 µl
Store at: -20°C

Summary

Product Description	Rabbit Polyclonal antibody recognizes NF2 / Merlin phospho (Ser518)
Tested Reactivity	Hu, Ms, Rat
Tested Application	ICC/IF, WB
Host	Rabbit
Clonality	Polyclonal
Isotype	IgG
Target Name	NF2 / Merlin
Species	Human
Immunogen	Peptide sequence around phosphorylation site of serine 518 (R-L-S(p)-M-E) derived from Human Merlin.
Conjugation	Un-conjugated
Alternate Names	Merlin; Schwannomin; SCH; Schwannomerlin; ACN; Moesin-ezrin-radixin-like protein; BANF; Neurofibromin-2

Application Instructions

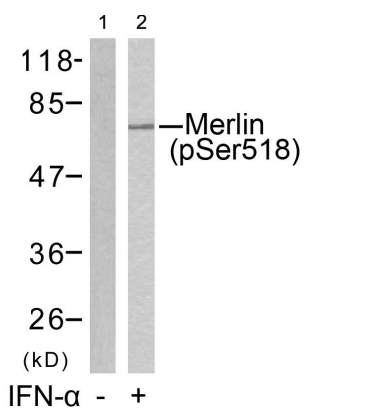
Application table	Application	Dilution
	ICC/IF	1:100 - 1:200
	WB	1:500 - 1:1000
Application Note	* The dilutions indicate recommended starting dilutions and the optimal dilutions or concentrations should be determined by the scientist.	

Properties

Form	Liquid
Purification	Antibodies were produced by immunizing rabbits with KLH-conjugated synthetic phosphopeptide. Antibodies were purified by affinity-chromatography using epitope-specific phosphopeptide. In addition, non-phospho specific antibodies were removed by chromatography using non-phosphopeptide.
Buffer	PBS (without Mg2+ and Ca2+, pH 7.4), 150mM NaCl, 0.02% Sodium azide and 50% Glycerol.
Preservative	0.02% Sodium azide
Stabilizer	50% Glycerol
Concentration	1 mg/ml
Storage instruction	For continuous use, store undiluted antibody at 2-8°C for up to a week. For long-term storage, aliquot and store at -20°C. Storage in frost free freezers is not recommended. Avoid repeated freeze/thaw cycles. Suggest spin the vial prior to opening. The antibody solution should be gently mixed before use.

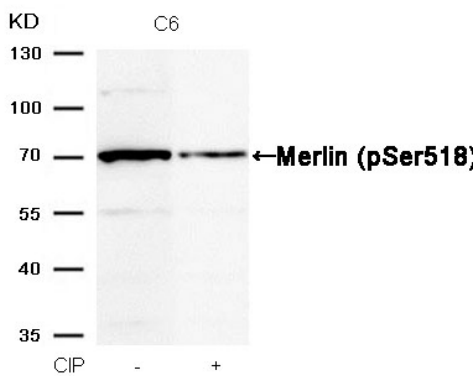
Note	For laboratory research only, not for drug, diagnostic or other use.
Bioinformation	
Gene Symbol	NF2
Gene Full Name	neurofibromin 2 (merlin)
Background	Probable regulator of the Hippo/SWH (Sav/Wts/Hpo) signaling pathway, a signaling pathway that plays a pivotal role in tumor suppression by restricting proliferation and promoting apoptosis. Along with WWC1 can synergistically induce the phosphorylation of LATS1 and LATS2 and can probably function in the regulation of the Hippo/SWH (Sav/Wts/Hpo) signaling pathway. May act as a membrane stabilizing protein. May inhibit PI3 kinase by binding to AGAP2 and impairing its stimulating activity.
Function	Probable regulator of the Hippo/SWH (Sav/Wts/Hpo) signaling pathway, a signaling pathway that plays a pivotal role in tumor suppression by restricting proliferation and promoting apoptosis. Along with WWC1 can synergistically induce the phosphorylation of LATS1 and LATS2 and can probably function in the regulation of the Hippo/SWH (Sav/Wts/Hpo) signaling pathway. May act as a membrane stabilizing protein. May inhibit PI3 kinase by binding to AGAP2 and impairing its stimulating activity. Suppresses cell proliferation and tumorigenesis by inhibiting the CUL4A-RBX1-DDB1-VprBP/DCAF1 E3 ubiquitin-protein ligase complex. [UniProt]
Research Area	Cancer antibody; Gene Regulation antibody; Metabolism antibody; Neuroscience antibody; Signaling Transduction antibody
Calculated Mw	70 kDa
PTM	Phosphorylation of Ser-518 inhibits nuclear localization by disrupting the intramolecular association of the FERM domain with the C-terminal tail (PubMed:20178741). The dephosphorylation of Ser-518 favors the interaction with NOP53 (PubMed:21167305). Ubiquitinated by the CUL4A-RBX1-DDB1-DCAF1/VprBP E3 ubiquitin-protein ligase complex for ubiquitination and subsequent proteasome-dependent degradation.

Images



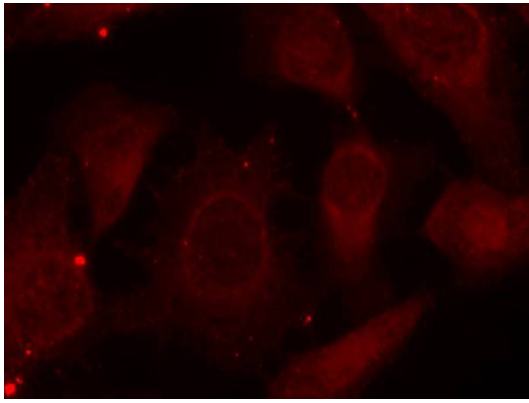
ARG51750 anti-NF2 / Merlin phospho (Ser518) antibody WB image

Western blot: Extracts from HUVEC cells untreated(lane 1) or treated with IFN-α(lane 2) stained with ARG51750 anti-NF2 / Merlin phospho (Ser518) antibody.



ARG51750 anti-NF2 / Merlin phospho (Ser518) antibody WB image

Western blot: Extracts from C6 cells, treated with calf intestinal phosphatase (CIP), stained with ARG51750 anti-NF2 / Merlin phospho (Ser518) antibody.



ARG51750 anti-NF2 / Merlin phospho (Ser518) antibody ICC/IF image

Immunofluorescence: methanol-fixed HeLa cells stained with ARG51750 anti-NF2 / Merlin phospho (Ser518) antibody.