

## ARG51794 anti-Smad 1 phospho (Ser465) antibody

Package: 100 µl, 50 µl  
Store at: -20°C

### Summary

Product Description	Rabbit Polyclonal antibody recognizes Smad 1 phospho (Ser465)
Tested Reactivity	Hu, Ms, Rat
Tested Application	WB
Host	Rabbit
Clonality	Polyclonal
Isotype	IgG
Target Name	Smad 1
Species	Human
Immunogen	Peptide sequence around phosphorylation site of serine 465 (I-S-S-V-S(p)) derived from Human Smad1.
Conjugation	Un-conjugated
Alternate Names	MADR1; Mad-related protein 1; Transforming growth factor-beta-signaling protein 1; Mothers against decapentaplegic homolog 1; MADH1; SMAD 1; Smad1; JV4-1; JV41; BSP-1; hSMAD1; BSP1; Mothers against DPP homolog 1; MAD homolog 1; SMAD family member 1

### Application Instructions

Application table	Application	Dilution
	WB	1:500 - 1:1000
Application Note	* The dilutions indicate recommended starting dilutions and the optimal dilutions or concentrations should be determined by the scientist.	

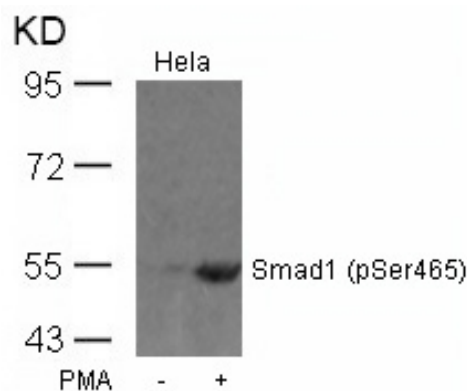
### Properties

Form	Liquid
Purification	Antibodies were produced by immunizing rabbits with KLH-conjugated synthetic phosphopeptide. Antibodies were purified by affinity-chromatography using epitope-specific phosphopeptide. In addition, non-phospho specific antibodies were removed by chromatography using non-phosphopeptide.
Buffer	PBS (without Mg2+ and Ca2+, pH 7.4), 150mM NaCl, 0.02% Sodium azide and 50% Glycerol.
Preservative	0.02% Sodium azide
Stabilizer	50% Glycerol
Concentration	1 mg/ml
Storage instruction	For continuous use, store undiluted antibody at 2-8°C for up to a week. For long-term storage, aliquot and store at -20°C. Storage in frost free freezers is not recommended. Avoid repeated freeze/thaw cycles. Suggest spin the vial prior to opening. The antibody solution should be gently mixed before use.
Note	For laboratory research only, not for drug, diagnostic or other use.

Bioinformation

Database links	<a href="#">GeneID: 17125 Mouse</a> <a href="#">GeneID: 4086 Human</a> <a href="#">Swiss-port # P70340 Mouse</a> <a href="#">Swiss-port # Q15797 Human</a>
Gene Symbol	SMAD1
Gene Full Name	SMAD family member 1
Background	Transcriptional modulator activated by BMP (bone morphogenetic proteins) type 1 receptor kinase. SMAD1 is a receptor-regulated SMAD (R-SMAD).
Function	Transcriptional modulator activated by BMP (bone morphogenetic proteins) type 1 receptor kinase. SMAD1 is a receptor-regulated SMAD (R-SMAD). SMAD1/OAZ1/PSMB4 complex mediates the degradation of the CREBBP/EP300 repressor SNIP1. May act synergistically with SMAD4 and YY1 in bone morphogenetic protein (BMP)-mediated cardiac-specific gene expression. [UniProt]
Highlight	Related Antibody Duos and Panels: <a href="#">ARG30155 Phospho Smad1 for Activation / Inhibition site Antibody Panel</a> Related products: <a href="#">Smad 1 antibodies</a> ; <a href="#">Smad 1 Duos / Panels</a> ; <a href="#">Anti-Rabbit IgG secondary antibodies</a> ;
Research Area	Cancer antibody; Developmental Biology antibody; Gene Regulation antibody; Metabolism antibody; Signaling Transduction antibody
Calculated Mw	52 kDa
PTM	Phosphorylation of the C-terminal SVS motif by BMP type 1 receptor kinase activates SMAD1 by promoting dissociation from the receptor and trimerization with SMAD4. Ubiquitinated by SMAD-specific E3 ubiquitin ligase SMURF1, leading to its degradation. Monoubiquitinated, leading to prevent DNA-binding. Deubiquitination by USP15 alleviates inhibition and promotes activation of TGF-beta target genes. Dephosphorylation, probably by PPM1A, induces its export from the nucleus to the cytoplasm (By similarity).

Images



ARG51794 anti-Smad 1 phospho (Ser465) antibody WB image

Western blot: Extracts from HeLa cells untreated or treated with PMA stained with ARG51794 anti-Smad 1 phospho (Ser465) antibody.