

## ARG52237 anti-Calretinin antibody

Package: 50 µl  
Store at: -20°C

### Summary

Product Description	Sheep Polyclonal antibody recognizes Calretinin
Tested Reactivity	Rat
Predict Reactivity	Hu, Ms, NHuPrm
Tested Application	ICC/IF, IHC-P, WB
Host	Sheep
Clonality	Polyclonal
Isotype	IgG
Target Name	Calretinin
Species	Guinea pig
Immunogen	Purified guinea pig calretinin
Conjugation	Un-conjugated
Alternate Names	CAB29; CR; CAL2; 29 kDa calbindin; Calretinin

### Application Instructions

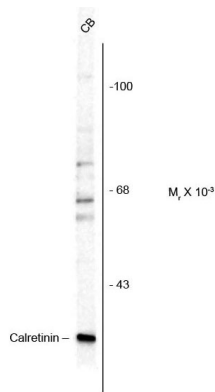
Application table	Application	Dilution
	ICC/IF	Assay-dependent
	IHC-P	Assay-dependent
	WB	1:1,000
Application Note	<p>Specific for the ~29 kDa calretinin protein in Western blots of Rat brain lysate. The antibody also works well for Immunohistochemistry on formalin or paraformaldehyde perfused Rat brain tissue sections.</p> <p>* The dilutions indicate recommended starting dilutions and the optimal dilutions or concentrations should be determined by the scientist.</p>	

### Properties

Form	Liquid
Purification	Protein A purified
Buffer	10 mM Tris and 100 mM NaCl
Storage instruction	For continuous use, store undiluted antibody at 2-8°C for up to a week. For long-term storage, aliquot and store at -20°C or below. Storage in frost free freezers is not recommended. Avoid repeated freeze/thaw cycles. Suggest spin the vial prior to opening. The antibody solution should be gently mixed before use.
Note	For laboratory research only, not for drug, diagnostic or other use.

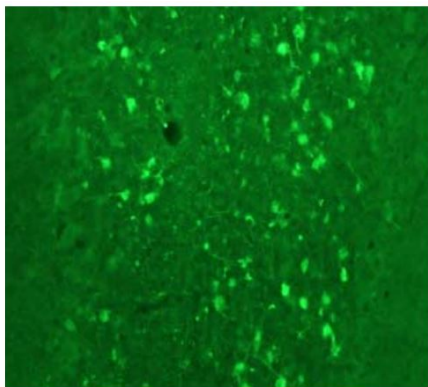
Database links	<a href="#">GeneID: 117059 Rat</a> <a href="#">Swiss-port # P47728 Rat</a>
Background	Calretinin is a calcium-binding protein involved in calcium signaling. It is abundantly expressed throughout the central nervous system, retina and many other tissues. Studies have shown that calretinin may play a role in neuroprotection by buffering intracellular calcium (Lukas and Jones 1994, Weisenhorn et al., 1996). Additionally, calretinin selectively stains mesothelial cells thus making it an important marker for differentiating malignant mesothelioma from carcinomas (Attanoos et al., 2000).
Highlight	Related products: <a href="#">Calretinin antibodies</a> ; <a href="#">Anti-Sheep IgG secondary antibodies</a> ; Related news: <a href="#">Neuronal Development Marker</a>
Research Area	Neuroscience antibody
Calculated Mw	32 kDa

Images



ARG52237 anti-Calretinin antibody WB image

Western Blot: rat cerebellum (CB) lysate showing specific immunolabeling of the ~29k calretinin protein stained with Calretinin antibody (ARG52237).



ARG52237 anti-Calretinin antibody IHC image

Immunohistochemistry: rat cerebellum stained with ARG52237 anti-Calretinin antibody showing fluorescence of calretinin containing cells.