

ARG52391
anti-PEBP1 / RKIP antibodyPackage: 50 µl
Store at: -20°C

Summary

Product Description	Rabbit Polyclonal antibody recognizes PEBP1 / RKIP
Tested Reactivity	Rat
Tested Application	WB
Host	Rabbit
Clonality	Polyclonal
Isotype	IgG
Target Name	PEBP1 / RKIP
Species	Rat
Immunogen	Purified native rat PEBP1 / RKIP
Conjugation	Un-conjugated
Alternate Names	PEBP; PBP; HCNP; HEL-S-34; RKIP; Prostatic-binding protein; HCNPpp; Phosphatidylethanolamine-binding protein 1; Raf kinase inhibitor protein; Neuropolypeptide h3; HEL-210; PEBP-1

Application Instructions

Application table	Application	Dilution
	WB	1:1000
Application Note	Specific for the ~ 22k PEBP protein in Western blots * The dilutions indicate recommended starting dilutions and the optimal dilutions or concentrations should be determined by the scientist.	

Properties

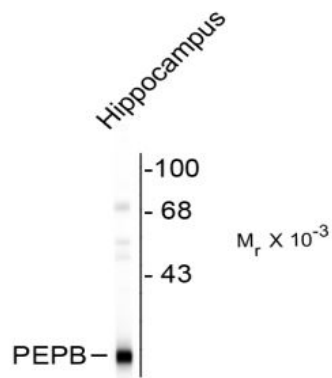
Form	Liquid
Purification	Neat Serum
Buffer	Neat serum
Storage instruction	For continuous use, store undiluted antibody at 2-8°C for up to a week. For long-term storage, aliquot and store at -20°C or below. Storage in frost free freezers is not recommended. Avoid repeated freeze/thaw cycles. Suggest spin the vial prior to opening. The antibody solution should be gently mixed before use.
Note	For laboratory research only, not for drug, diagnostic or other use.

Bioinformation

Database links	GeneID: 29542 Rat
----------------	-----------------------------------

Gene Symbol	PEBP1
Gene Full Name	phosphatidylethanolamine binding protein 1
Background	Phosphatidylethanolamine binding protein (PEBP), also known as Raf kinase inhibitory protein (RKIP) is a highly conserved multifunctional protein that modulates the Raf/MAPK signaling cascade and has been implicated as a suppressor of metastatic cancer (Trakul N et al., 2005). PEBP has been shown to not only inhibit cell proliferation but also to induce differentiation of human keratinocytes (Yamazaki et al., 2004). Dysregulation of calpain activity results in cellular degeneration in conditions such as Alzheimer's disease and recently PEBP has been identified as a potential in vivo calpain substrate (Chen et al., 2006).
Research Area	Cancer antibody; Cell Biology and Cellular Response antibody; Gene Regulation antibody; Neuroscience antibody
Calculated Mw	21 kDa

Images



ARG52391 anti-PEBP1 / RKIP antibody WB image

Western blot: rat brain lysate stained with ARG52391 anti-PEBP1 / RKIP antibody showing the specific immunolabeling of the ~ 22k PEBP protein.