

ARG52460 anti-beta III Tubulin antibody [AA10]

Package: 50 µl
Store at: -20°C

Summary

Product Description	Mouse Monoclonal antibody [AA10] recognizes Tubulin, beta III
Tested Reactivity	Ms, Rat
Tested Application	IHC-P, WB
Host	Mouse
Clonality	Monoclonal
Clone	AA10
Isotype	IgG
Target Name	beta III Tubulin
Species	Rat
Immunogen	Synthetic peptide corresponding to amino acid residues specific to beta III Tubulin conjugated to KLH
Conjugation	Un-conjugated
Alternate Names	CDCBM1; Tubulin beta-4 chain; Tubulin beta-3 chain; CFEOM3A; Tubulin beta-III; TUBB4; CDCBM; CFEOM3; FEOM3; beta-4

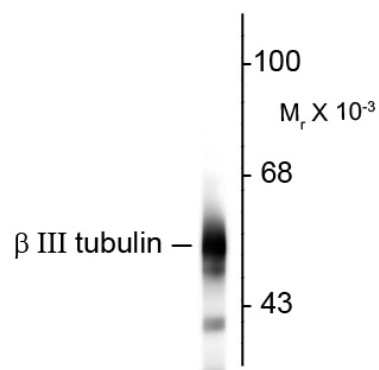
Application Instructions

Application table	Application	Dilution
	IHC-P	1:1000
	WB	1:1000 - 1:5000
Application Note	Specific for the ~55kDa beta III Tubulin protein. This clone is similar to the monoclonal antibody Tuj1. * The dilutions indicate recommended starting dilutions and the optimal dilutions or concentrations should be determined by the scientist.	

Properties

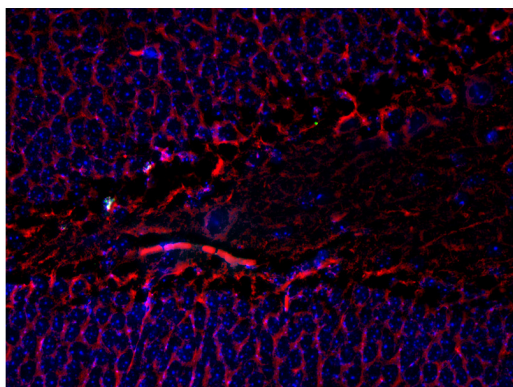
Form	Liquid
Purification	Protein G purified
Buffer	10 mM HEPES (pH 7.5), 150 mM NaCl, 0.1 mg/ml BSA and 50% Glycerol
Stabilizer	0.1 mg/ml BSA, 50% Glycerol
Storage instruction	For continuous use, store undiluted antibody at 2-8°C for up to a week. For long-term storage, aliquot and store at -20°C. Storage in frost free freezers is not recommended. Avoid repeated freeze/thaw cycles. Suggest spin the vial prior to opening. The antibody solution should be gently mixed before use.
Note	For laboratory research only, not for drug, diagnostic or other use.

Database links	GeneID: 22152 Mouse GeneID: 246118 Rat Swiss-port # Q4QRB4 Rat Swiss-port # Q9ERD7 Mouse
Gene Symbol	TUBB3
Gene Full Name	Tubulin, beta 3 class III
Background	<p>Tubulin is the major constituent of microtubules, existing as a heterodimer of the α and β subunits. The beta III isoform of Tubulin is found almost exclusively in neuronal processes of adult tissues and is therefore an excellent marker for neurons. Neuron specific, posttranslational modifications within the C-terminal domain of beta III Tubulin have been shown to be developmentally regulated suggesting that they may serve to modulate the interaction of Tubulin with microtubule associated proteins (Lee et al., 1990). Additionally, beta III Tubulin has been found to be highly expressed in cancer cells such as small cell lung cancer, large cell neuroendocrine carcinoma and adenocarcinomas and is correlated with an increasing histological degree of malignancy (Katsetos et al., 2003)</p>
Highlight	<p>Related products: beta III Tubulin antibodies; beta III Tubulin Duos / Panels; Anti-Mouse IgG secondary antibodies; Related news: Neuronal Development Marker Astrocyte-to-neuron conversion for Parkinson's disease treatment</p>
Research Area	Controls and Markers antibody; Neuroscience antibody; Signaling Transduction antibody; Neuron Development Study antibody; Neuronal Cytoskeletal antibody; Neurite Marker antibody
Calculated Mw	50 kDa
PTM	<p>Some glutamate residues at the C-terminus are polyglutamylated, resulting in polyglutamate chains on the gamma-carboxyl group (PubMed:26875866). Polyglutamylation plays a key role in microtubule severing by spastin (SPAST). SPAST preferentially recognizes and acts on microtubules decorated with short polyglutamate tails: severing activity by SPAST increases as the number of glutamates per tubulin rises from one to eight, but decreases beyond this glutamylation threshold (PubMed:26875866). Some glutamate residues at the C-terminus are monoglycylated but not polyglycylated due to the absence of functional TTL10 in human. Monoglycylation is mainly limited to tubulin incorporated into axonemes (cilia and flagella). Both polyglutamylation and monoglycylation can coexist on the same protein on adjacent residues, and lowering glycylation levels increases polyglutamylation, and reciprocally. The precise function of monoglycylation is still unclear (Probable). Phosphorylated on Ser-172 by CDK1 during the cell cycle, from metaphase to telophase, but not in interphase. This phosphorylation inhibits tubulin incorporation into microtubules.</p>



ARG52460 anti-beta III Tubulin antibody [AA10] WB image

Western Blot: rat cortex lysate showing specific immunolabeling of the ~55k beta III tubulin protein stained with anti-TUJ1 antibody [AA10] (ARG52460)



ARG52460 anti-beta III Tubulin antibody [AA10] IHC image

Immunohistochemistry: mouse dentate gyrus stained with ARG52460 TUJ1 antibody [AA10] showing beta III tubulin in red and nuclei in blue.