

## ARG52561 anti-Bcl 6 antibody [SP155]

Package: 100 µl  
Store at: -20°C

### Summary

Product Description	Rabbit Monoclonal antibody [SP155] recognizes Bcl 6
Tested Reactivity	Hu
Predict Reactivity	Rat
Tested Application	FACS, IHC-P
Host	Rabbit
Clonality	Monoclonal
Clone	SP155
Isotype	IgG
Target Name	Bcl 6
Species	Human
Immunogen	Synthetic peptide derived from the C-terminus of human BCL-6 protein.
Conjugation	Un-conjugated
Alternate Names	ZNF51; LAZ3; Zinc finger protein 51; Protein LAZ-3; Zinc finger and BTB domain-containing protein 27; B-cell lymphoma 6 protein; B-cell lymphoma 5 protein; BCL5; BCL6A; BCL-5; ZBTB27; BCL-6

### Application Instructions

Application table	Application	Dilution
	FACS	Assay-Dependent
	IHC-P	1:100
Application Note	IHC-P: Antigen Retrieval: Boil tissue section in 10mM citrate buffer, pH 6.0 for 10 min followed by cooling at RT for 20 min. Incubation Time: 10 min at RT. * The dilutions indicate recommended starting dilutions and the optimal dilutions or concentrations should be determined by the scientist.	
Positive Control	Tonsil	

### Properties

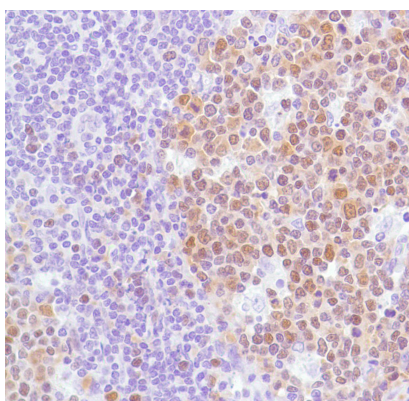
Form	Liquid
Purification	Purified by protein A/G
Buffer	PBS (pH 7.6), 1% BSA and < 0.1% Sodium azide
Preservative	< 0.1% Sodium azide
Stabilizer	1% BSA

Storage instruction	For continuous use, store undiluted antibody at 2-8°C for up to a week. For long-term storage, aliquot and store at -20°C or below. Storage in frost free freezers is not recommended. Avoid repeated freeze/thaw cycles. Suggest spin the vial prior to opening. The antibody solution should be gently mixed before use.
Note	For laboratory research only, not for drug, diagnostic or other use.

## Bioinformation

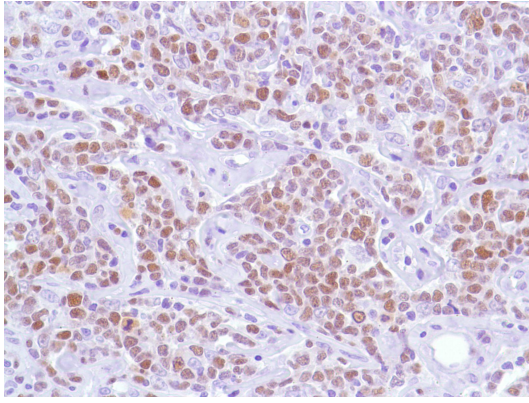
Database links	<a href="#">GeneID: 604 Human</a> <a href="#">Swiss-port # P41182 Human</a>
Background	B cell lymphoma 6 protein (Bcl-6) proto-oncogene product (a Kruppel-type zinc-finger protein) is mainly expressed in normal germinal center B cells and related lymphomas. Bcl-6 is involved in chromosome rearrangements at 3q27 in non-Hodgkin's lymphomas and Bcl-6 rearrangements have been detected in 33%-45% of diffuse large B cell lymphomas. Bcl-6 has been detected immunohistochemically in follicular lymphomas, diffuse large B cell lymphomas, Burkitt lymphomas and in nodular, lymphocyte predominant Hodgkin's disease.
Highlight	Related products: <a href="#">BCL6 antibodies; Anti-Rabbit IgG secondary antibodies;</a> Related news: <a href="#">Lymphoma</a>
Research Area	Cancer antibody; Gene Regulation antibody
Calculated Mw	79 kDa
PTM	Phosphorylated by MAPK1 in response to antigen receptor activation at Ser-333 and Ser-343. Phosphorylated by ATM in response to genotoxic stress. Phosphorylation induces its degradation by ubiquitin/proteasome pathway. Polyubiquitinated. Polyubiquitinated by SCF(FBXO11), leading to its degradation by the proteasome. Acetylated at Lys-379 by EP300 which inhibits the interaction with NuRD complex and the transcriptional repressor function. Deacetylated by HDAC- and SIR2-dependent pathways.
Cellular Localization	Nucleus

## Images



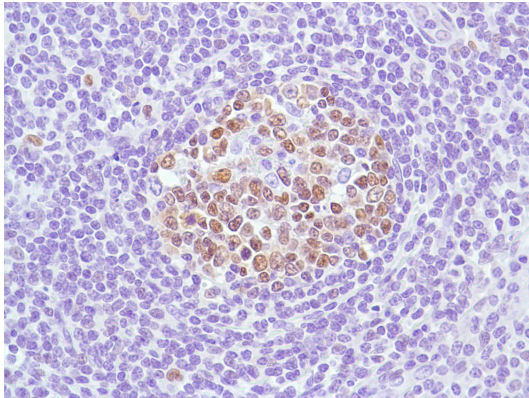
ARG52561 anti-Bcl 6 antibody [SP155] IHC-P image

Immunohistochemistry: Human Tonsil stained with ARG52561 anti-Bcl 6 antibody [SP155].



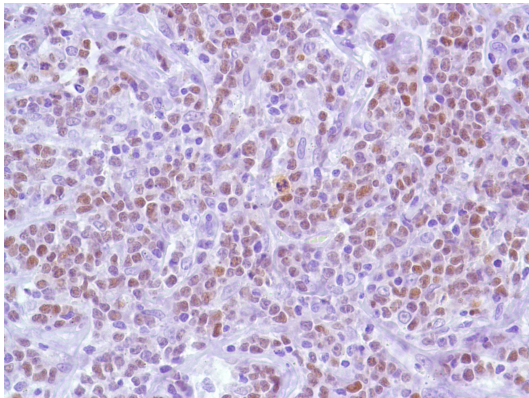
ARG52561 anti-Bcl 6 antibody [SP155] IHC-P image

Immunohistochemistry: Human B-Cell Lymphoma stained with ARG52561 anti-Bcl 6 antibody [SP155].



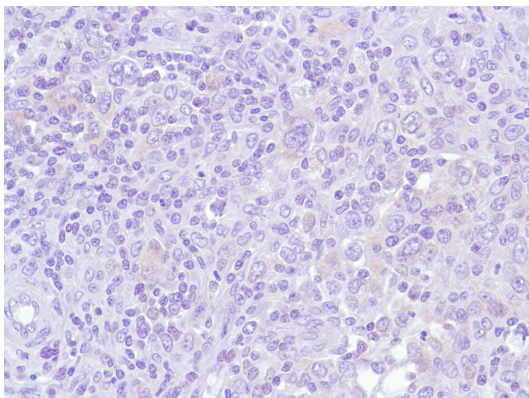
ARG52561 anti-Bcl 6 antibody [SP155] IHC-P image

Immunohistochemistry: Human Tonsil stained with ARG52561 anti-Bcl 6 antibody [SP155].



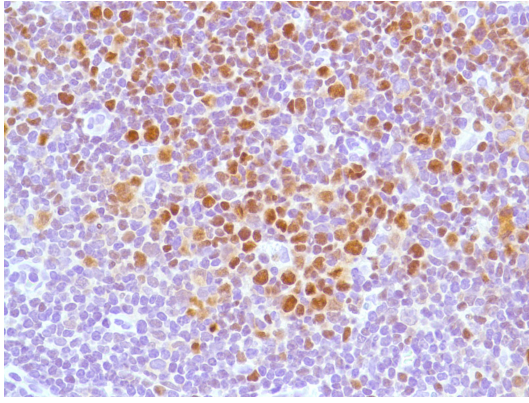
ARG52561 anti-Bcl 6 antibody [SP155] IHC-P image

Immunohistochemistry: Human B-Cell Lymphoma stained with ARG52561 anti-Bcl 6 antibody [SP155].



ARG52561 anti-Bcl 6 antibody [SP155] IHC-P image

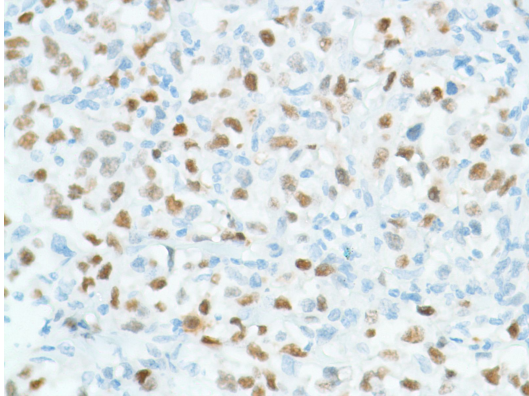
Immunohistochemistry: Human HK Lymphoma stained with ARG52561 anti-Bcl 6 antibody [SP155].



ARG52561 anti-Bcl 6 antibody [SP155] IHC-P image

Immunohistochemistry: Human Follicular Lymphoma stained with ARG52561 anti-Bcl 6 antibody [SP155].

---



ARG52561 anti-Bcl 6 antibody [SP155] IHC-P image

Immunohistochemistry: Human Diffuse B-Cell Lymphoma stained with ARG52561 anti-Bcl 6 antibody [SP155].

---