

ARG52819 anti-CD8 antibody [SP16]

Package: 100 µl
Store at: -20°C

Summary

Product Description	Rabbit Monoclonal antibody [SP16] recognizes CD8
Tested Reactivity	Hu
Tested Application	IHC-P
Host	Rabbit
Clonality	Monoclonal
Clone	SP16
Isotype	IgG
Target Name	CD8
Antigen Species	Human
Immunogen	Synthetic peptide corresponding to C-terminus of alpha chain of the human CD8 molecule.
Conjugation	Un-conjugated
Alternate Names	T-cell surface glycoprotein CD8 alpha chain; Leu2; p32; T-lymphocyte differentiation antigen T8/Leu-2; CD8; MAL; CD antigen CD8a

Application Instructions

Application table	<table> <tr> <th>Application</th><th>Dilution</th></tr> <tr> <td>IHC-P</td><td>1:100</td></tr> </table>	Application	Dilution	IHC-P	1:100
Application	Dilution				
IHC-P	1:100				
Application Note	<p>IHC-P: Antigen Retrieval: Boil tissue section in 10mM citrate buffer, pH 6.0 for 10 min followed by cooling at RT for 20 min.</p> <p>Incubation Time: 30 min at RT.</p> <p>* The dilutions indicate recommended starting dilutions and the optimal dilutions or concentrations should be determined by the scientist.</p>				
Positive Control	Tonsil				
Calculated Mw	32 kDa				

Properties

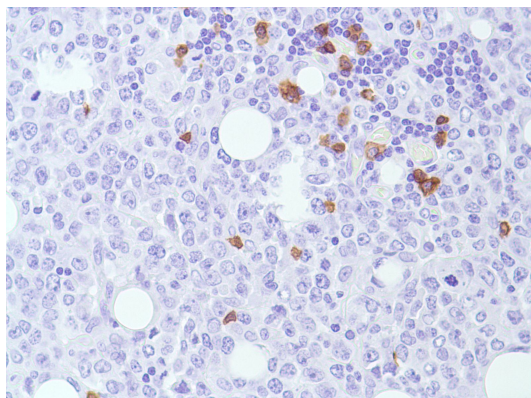
Form	Liquid
Buffer	Tissue culture supernatant in TBS (pH 7.5), 1% BSA and < 0.1% Sodium azide
Preservative	< 0.1% Sodium azide
Stabilizer	1% BSA
Storage instruction	For continuous use, store undiluted antibody at 2-8°C for up to a week. For long-term storage, aliquot and store at -20°C or below. Storage in frost free freezers is not recommended. Avoid repeated freeze/thaw cycles. Suggest spin the vial prior to opening. The antibody solution should be gently mixed before use.

Note For laboratory research only, not for drug, diagnostic or other use.

Bioinformation

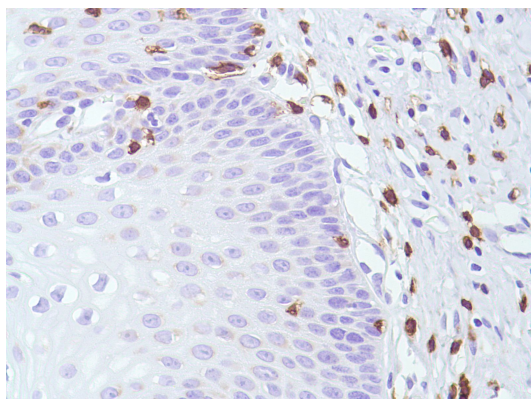
Database links	GeneID: 925 Human Swiss-port # P01732 Human
Background	CD8 molecule consists of two chains, termed α and β chain, which are expressed as a disulphide-linked α/β heterodimer or as an α/α homodimer on T cell subset, thymocytes and NK cells. The majority of CD8+ T cells express CD8 as α/β heterodimer. CD8 functions as a coreceptor in concert with TCR for binding the MHC class I/peptide complex. The HIV-2 envelope glycoprotein binds CD8 α chain (but not β chain).
Highlight	Related products: CD8 antibodies ; CD8 ELISA Kits ; CD8 Duos / Panels ; Anti-Rabbit IgG secondary antibodies ; Related news: More effective cocktail therapy for cancer immune evasion Related blogs: More effective cocktail therapy for cancer immune evasion
Resrarch Area	Developmental Biology antibody; Immune System antibody
Cellular Localization	Membrane

Images



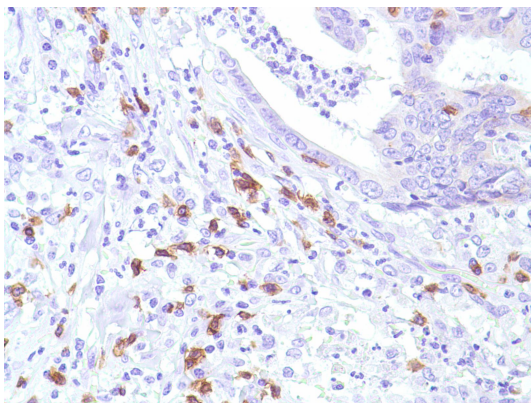
ARG52819 anti-CD8 antibody [SP16] IHC-P image

Immunohistochemistry: Human B Cell Lymphoma stained with CD8 antibody [SP16] (ARG52819)



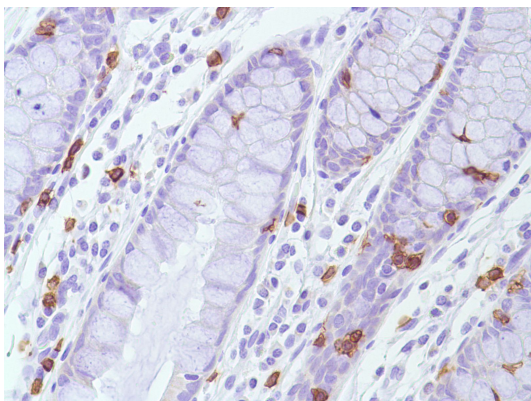
ARG52819 anti-CD8 antibody [SP16] IHC-P image

Immunohistochemistry: Human Cervix stained with CD8 antibody [SP16] (ARG52819)



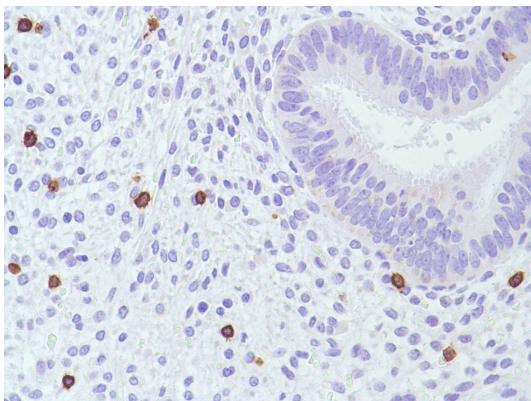
ARG52819 anti-CD8 antibody [SP16] IHC-P image

Immunohistochemistry: Human Colon Adenocarcinoma stained with CD8 antibody [SP16] (ARG52819)



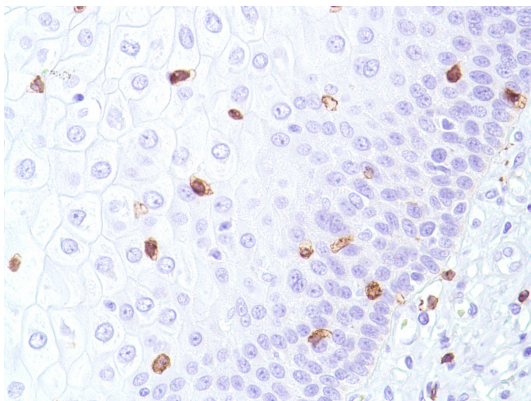
ARG52819 anti-CD8 antibody [SP16] IHC-P image

Immunohistochemistry: Human Colon stained with CD8 antibody [SP16] (ARG52819)



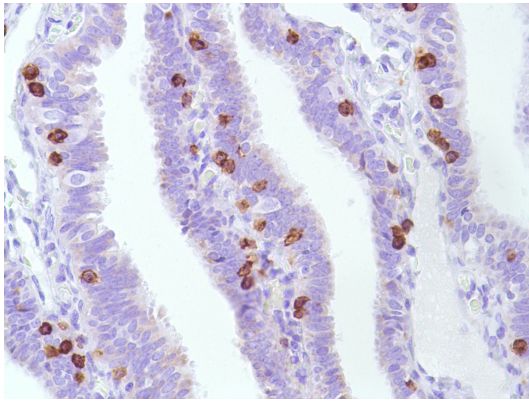
ARG52819 anti-CD8 antibody [SP16] IHC-P image

Immunohistochemistry: Human Endometrium stained with CD8 antibody [SP16] (ARG52819)



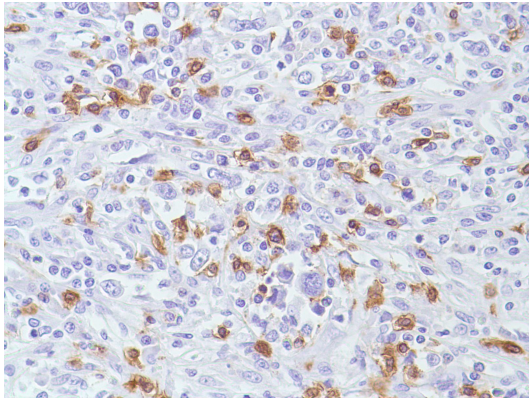
ARG52819 anti-CD8 antibody [SP16] IHC-P image

Immunohistochemistry: Human Esophagus stained with CD8 antibody [SP16] (ARG52819)



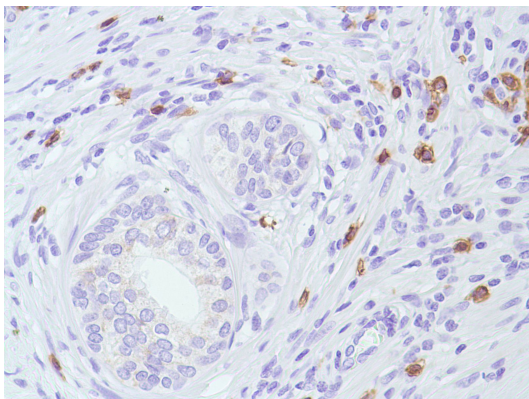
ARG52819 anti-CD8 antibody [SP16] IHC-P image

Immunohistochemistry: Human Fallopian Tube stained with CD8 antibody [SP16] (ARG52819)



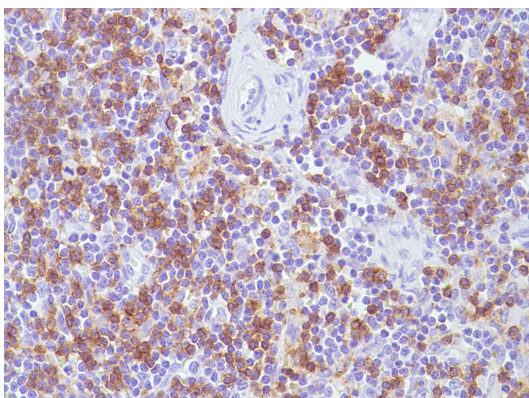
ARG52819 anti-CD8 antibody [SP16] IHC-P image

Immunohistochemistry: Human HK Lymphoma stained with CD8 antibody [SP16] (ARG52819)



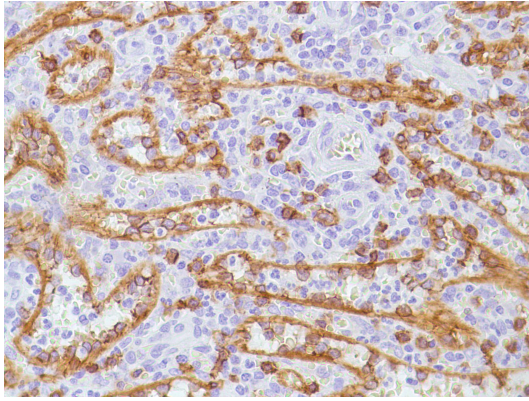
ARG52819 anti-CD8 antibody [SP16] IHC-P image

Immunohistochemistry: Human Prostate stained with CD8 antibody [SP16] (ARG52819)



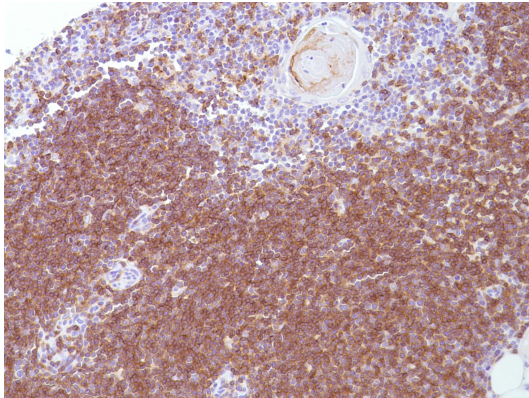
ARG52819 anti-CD8 antibody [SP16] IHC-P image

Immunohistochemistry: Human Reactive Lymph Node stained with CD8 antibody [SP16] (ARG52819)



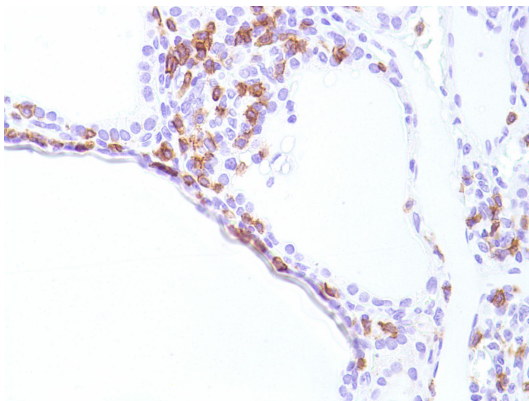
ARG52819 anti-CD8 antibody [SP16] IHC-P image

Immunohistochemistry: Human Spleen stained with CD8 antibody [SP16] (ARG52819)



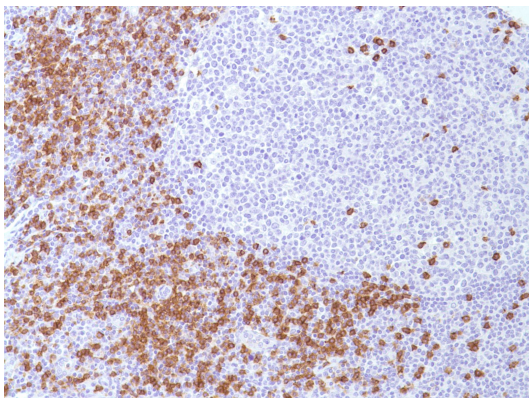
ARG52819 anti-CD8 antibody [SP16] IHC-P image

Immunohistochemistry: Human Thymus stained with CD8 antibody [SP16] (ARG52819)



ARG52819 anti-CD8 antibody [SP16] IHC-P image

Immunohistochemistry: Human Thyroid stained with CD8 antibody [SP16] (ARG52819)



ARG52819 anti-CD8 antibody [SP16] IHC-P image

Immunohistochemistry: Human Tonsil stained with CD8 antibody [SP16] (ARG52819)
