

## ARG53062 anti-Galectin 1 antibody [SP247]

Package: 100 µl, 50 µl  
Store at: -20°C

### Summary

Product Description	Rabbit Monoclonal antibody [SP247] recognizes Galectin 1
Tested Reactivity	Hu, Ms
Tested Application	FACS, IHC-P, WB
Host	Rabbit
Clonality	Monoclonal
Clone	SP247
Isotype	IgG
Target Name	Galectin 1
Species	Human
Immunogen	Synthetic peptide near the C-terminus of the Human Galectin 1 protein.
Conjugation	Un-conjugated
Alternate Names	HBL; Gal-1; GAL1; HPL; Lectin galactoside-binding soluble 1; Galectin-1; 14 kDa laminin-binding protein; Lactose-binding lectin 1; GBP; Beta-galactoside-binding lectin L-14-I; Putative MAPK-activating protein PM12; 14 kDa lectin; Galaptin; S-Lac lectin 1; HLBP14

### Application Instructions

Application table	Application	Dilution
	FACS	Assay-Dependent
	IHC-P	1:100
	WB	1:100 - 1:250
Application Note	IHC-P: Antigen Retrieval: Boil tissue section in EDTA buffer, pH 8.0 for 10 min followed by cooling at room temperature for 20 min. Incubation Time: 10 at RT. * The dilutions indicate recommended starting dilutions and the optimal dilutions or concentrations should be determined by the scientist.	
Positive Control	Placenta, Tonsil, NIH/3T3 Cell Lysate	

### Properties

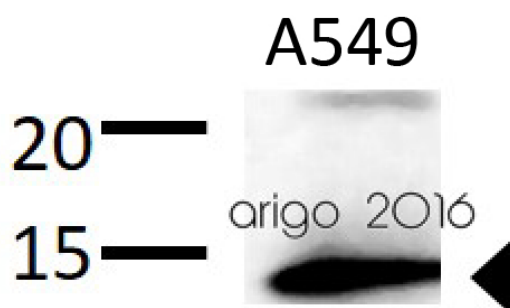
Form	Liquid
Purification	Purified by protein A/G
Buffer	PBS (pH 7.6), 1% BSA and < 0.1% Sodium azide
Preservative	< 0.1% Sodium azide
Stabilizer	1% BSA

Storage instruction	For continuous use, store undiluted antibody at 2-8°C for up to a week. For long-term storage, aliquot and store at -20°C or below. Storage in frost free freezers is not recommended. Avoid repeated freeze/thaw cycles. Suggest spin the vial prior to opening. The antibody solution should be gently mixed before use.
Note	For laboratory research only, not for drug, diagnostic or other use.

## Bioinformation

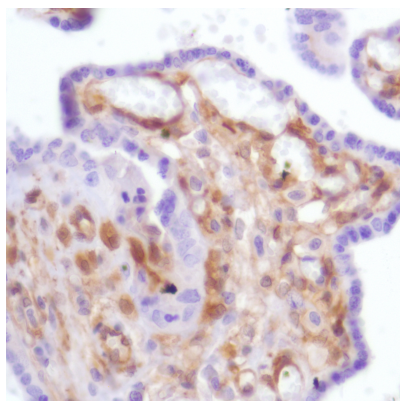
Database links	<a href="#">GeneID: 16852 Mouse</a> <a href="#">GeneID: 3956 Human</a> <a href="#">Swiss-port # P09382 Human</a> <a href="#">Swiss-port # P16045 Mouse</a>
Background	Galectin-1 (gal-1) is expressed intracellularly and extracellularly by various normal and pathological tissues. It shows a wide range of biological activity such as apoptosis, cell proliferation and cell differentiation. Gal-1 is overexpressed in endothelial cells of different human tumors, tumor cells, and extracellular matrix. It binds its ligands such as beta-galactoside and a wide array of complex carbohydrates to regulate immune responses.
Research Area	Cell Biology and Cellular Response antibody; Cell Death antibody
Calculated Mw	15 kDa
Cellular Localization	Cytoplasm, Extracellular Matrix, Nucleus

## Images



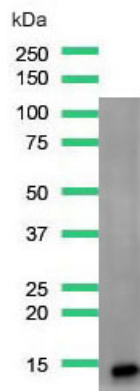
ARG53062 anti-Galectin 1 antibody [SP247] WB image

Western blot: 30 µg of A549 cell lysate stained with ARG53062 anti-Galectin 1 antibody [SP247] at 1:100 dilution.



ARG53062 anti-Galectin 1 antibody [SP247] IHC-P image

Immunohistochemistry: Human Placenta stained with ARG53062 anti-Galectin 1 antibody [SP247].



ARG53062 anti-Galectin 1 antibody [SP247] WB image

Western blot: NIH/3T3 cell lysate stained with ARG53062 anti-Galectin 1 antibody [SP247].



ARG53062 anti-Galectin 1 antibody [SP247] WB image

Western blot: 30 µg of Mouse kidney lysate stained with ARG53062 anti-Galectin 1 antibody [SP247] at 1:100 dilution.