

## ARG53215 anti-Cytokeratin 8 antibody

Package: 500 µl, 250 µl  
Store at: -20°C

### Summary

Product Description	Rabbit Polyclonal antibody recognizes Cytokeratin 8
Tested Reactivity	Hu
Tested Application	IHC-P, WB
Host	Rabbit
Clonality	Polyclonal
Isotype	IgG
Target Name	Cytokeratin 8
Species	Human
Immunogen	Recombinant protein corresponding to aa. 1-483 of Human Cytokeratin 8.
Conjugation	Un-conjugated
Alternate Names	Keratin, type II cytoskeletal 8; KO; CYK8; CK-8; Type-II keratin Kb8; K2C8; CARD2; Keratin-8; K8; CK8; Cytokeratin-8

### Application Instructions

Application table	Application	Dilution
	IHC-P	1:100
	WB	1:25
Application Note	<p>IHC-P: Antigen Retrieval: Boil tissue section in 10mM citrate buffer, pH 6.0 for 10 min followed by cooling at RT for 20 min.</p> <p>Incubation Time: 10 min at RT.</p> <p>* The dilutions indicate recommended starting dilutions and the optimal dilutions or concentrations should be determined by the scientist.</p>	
Positive Control	Breast Carcinoma, Lung, Skin, HeLa Cell Lysate	

### Properties

Form	Liquid
Purification	Immunogen affinity purified
Buffer	PBS (pH 7.6), 1% BSA and < 0.1% Sodium azide
Preservative	< 0.1% Sodium azide
Stabilizer	1% BSA
Storage instruction	For continuous use, store undiluted antibody at 2-8°C for up to a week. For long-term storage, aliquot and store at -20°C or below. Storage in frost free freezers is not recommended. Avoid repeated freeze/thaw cycles. Suggest spin the vial prior to opening. The antibody solution should be gently mixed before use.

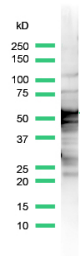
Bioinformation

Database links	<a href="#">GeneID: 3856 Human</a> <a href="#">Swiss-port # P05787 Human</a>
Background	Keratin 8 belongs to the type B (basic) subfamily of high molecular weight keratins and exists in combination with keratin 18. Keratin 8 is primarily found in the non-squamous epithelia and is present in majority of adenocarcinomas and ductal carcinomas. It is absent in squamous cell carcinomas. Hepatocellular carcinomas are defined by the use of antibodies that recognize only cytokeratin polypeptides 8 and 18.
Research Area	Cancer antibody; Signaling Transduction antibody
Calculated Mw	54 kDa
PTM	Phosphorylation on serine residues is enhanced during EGF stimulation and mitosis. Ser-74 phosphorylation plays an important role in keratin filament reorganization. O-glycosylated. O-GlcNAcylation at multiple sites increases solubility, and decreases stability by inducing proteasomal degradation. O-glycosylated (O-GlcNAcylated), in a cell cycle-dependent manner.
Cellular Localization	Cytoplasm, Membrane

Images

ARG53215 anti-Cytokeratin 8 antibody WB image

Western blot: HeLa cell lysate stained with ARG53215 anti-Cytokeratin 8 antibody.



ARG53215 anti-Cytokeratin 8 antibody IHC-P image

Immunohistochemistry: Human lung stained with ARG53215 anti-Cytokeratin 8 antibody.

