

ARG53222 anti-Ki-67 antibody [SP6]

Package: 500 µl
Store at: -20°C

Summary

Product Description	Rabbit Monoclonal antibody [SP6] recognizes Ki-67
Tested Reactivity	Hu, Ms, Rat, Marmoset, Zfish
Tested Application	FACS, ICC/IF, IHC-FoFr, IHC-Fr, IHC-P, WB
Host	Rabbit
Clonality	Monoclonal
Clone	SP6
Isotype	IgG
Target Name	Ki-67
Antigen Species	Human
Immunogen	Synthetic peptide from C-terminus of human Ki-67 protein.
Conjugation	Un-conjugated
Alternate Names	Antigen Ki-67; MIB-; KIA; MIB-1; PPP1R105

Application Instructions

Application table	Application	Dilution
	FACS	Assay-dependent
	ICC/IF	1:200-1:500
	IHC-FoFr	Assay-dependent
	IHC-Fr	1:200-1:1000
	IHC-P	1:200
	WB	1:200-1:500
Application Note	IHC-P: Antigen Retrieval: Boil tissue section in 10mM citrate buffer, pH 6.0 for 10 min followed by cooling at RT for 20 min. Incubation Time: 30 min at RT. * The dilutions indicate recommended starting dilutions and the optimal dilutions or concentrations should be determined by the scientist.	
Positive Control	Tonsil	
Calculated Mw	345 kDa and 395 kDa	

Properties

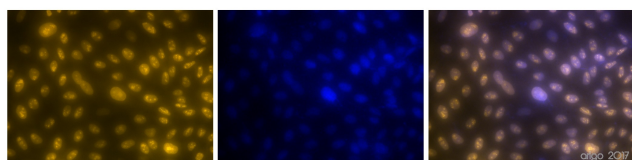
Form	Liquid
Buffer	Tissue culture supernatant in TBS (pH 7.5), 1% BSA and < 0.1% Sodium azide

Preservative	< 0.1% Sodium azide
Stabilizer	1% BSA
Storage instruction	For continuous use, store undiluted antibody at 2-8°C for up to a week. For long-term storage, aliquot and store at -20°C or below. Storage in frost free freezers is not recommended. Avoid repeated freeze/thaw cycles. Suggest spin the vial prior to opening. The antibody solution should be gently mixed before use.
Note	For laboratory research only, not for drug, diagnostic or other use.

Bioinformation

Database links	GeneID: 4288 Human Swiss-port # P46013 Human
Background	Ki-67 is a nuclear protein, which is expressed in the proliferating cells. Ki-67 is preferentially expressed during late G1-, S-, M-, and G2-phases of the cell cycle, while cells in the G0 (quiescent) phase are negative for this protein.
Highlight	<p>Related products: Ki67 antibodies; Ki67 Duos / Panels; Anti-Rabbit IgG secondary antibodies;</p> <p>Related news: Understanding Your Cells: Choose the right markers SM5-1, a promising immunotherapy for Hepatocellular Carcinoma (HCC) Neuronal Development Marker Choose the Best ZIKA Virus Antibodies Fight microcephaly with arigo Tools for studying Exosomes</p>
Research Area	Microvascular Density Study antibody; Proliferation Marker antibody
Cellular Localization	Nucleus

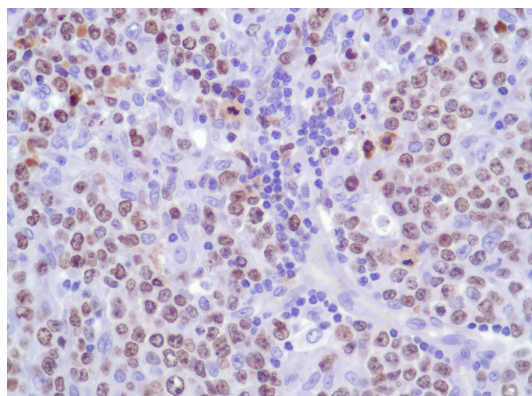
Images



ARG53222 anti-Ki-67 antibody [SP6] ICC/IF image

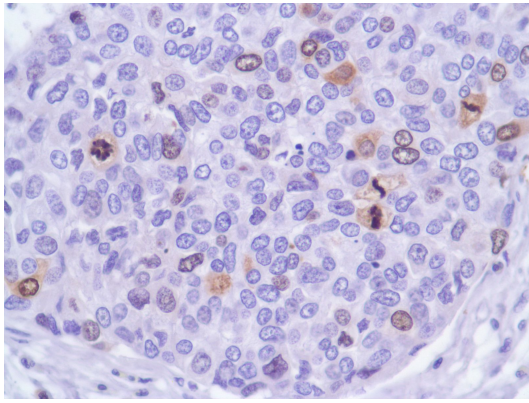
Immunofluorescence: 100% Methanol fixed (RT, 10 min) HeLa cells stained with ARG53222 anti-Ki-67 antibody [SP6] at 1:200 dilution. Left: primary antibody (orange). Middle: DAPI (blue). Right: Merge.

Secondary antibody: ARG21917 Goat anti-Rabbit IgG antibody (TRITC)



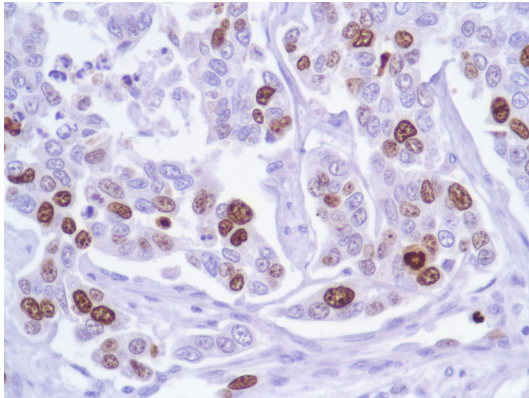
ARG53222 anti-Ki-67 antibody [SP6] IHC-P image

Immunohistochemistry: Human B Cell Lymphoma stained with Ki67 antibody [SP6] (ARG53222)



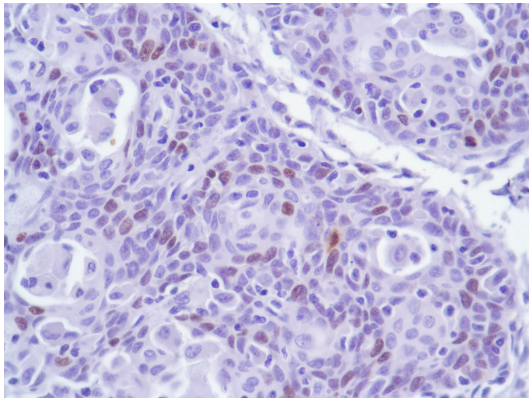
ARG53222 anti-Ki-67 antibody [SP6] IHC-P image

Immunohistochemistry: Human Bladder Transitional Cell Carcinoma stained with Ki67 antibody [SP6] (ARG53222)



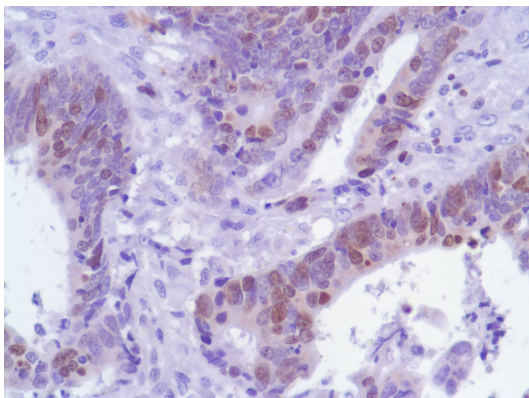
ARG53222 anti-Ki-67 antibody [SP6] IHC-P image

Immunohistochemistry: Human Breast Adenocarcinoma stained with Ki67 antibody [SP6] (ARG53222)



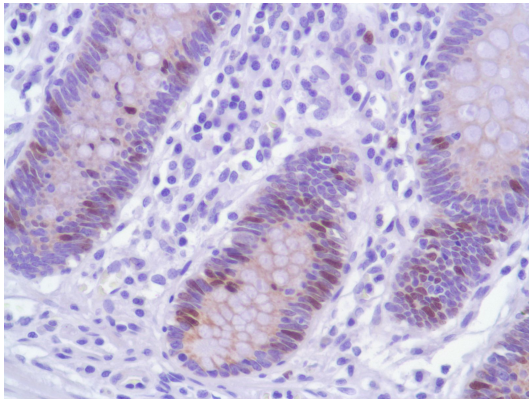
ARG53222 anti-Ki-67 antibody [SP6] IHC-P image

Immunohistochemistry: Human Cervical Squamous Cell Carcinoma stained with Ki67 antibody [SP6] (ARG53222)



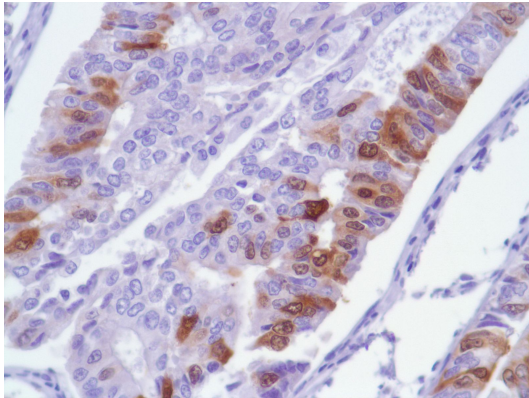
ARG53222 anti-Ki-67 antibody [SP6] IHC-P image

Immunohistochemistry: Human Colon Adenocarcinoma stained with Ki67 antibody [SP6] (ARG53222)



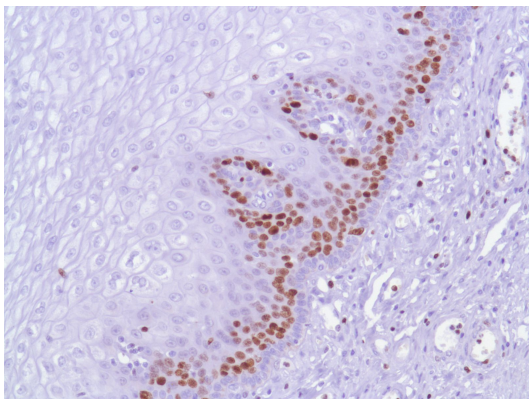
ARG53222 anti-Ki-67 antibody [SP6] IHC-P image

Immunohistochemistry: Human Colon stained with Ki67 antibody [SP6] (ARG53222)



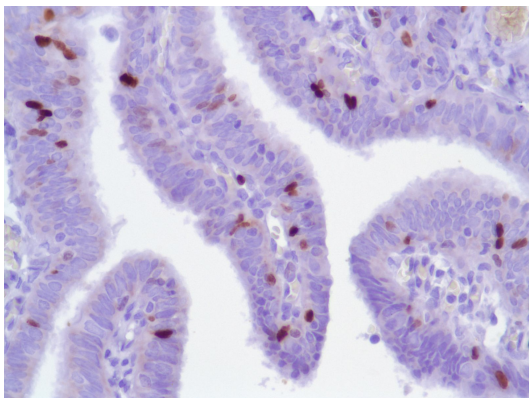
ARG53222 anti-Ki-67 antibody [SP6] IHC-P image

Immunohistochemistry: Human Endometrial Adenocarcinoma stained with Ki67 antibody [SP6] (ARG53222)



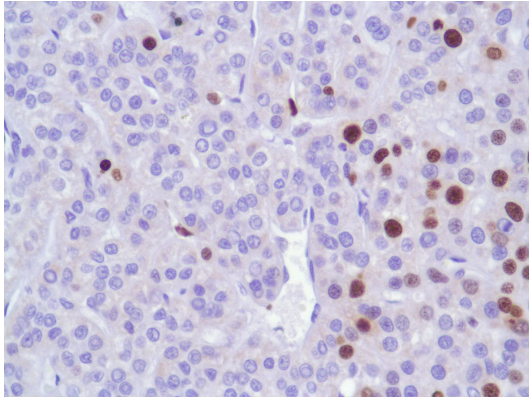
ARG53222 anti-Ki-67 antibody [SP6] IHC-P image

Immunohistochemistry: Human Esophagus stained with Ki67 antibody [SP6] (ARG53222)



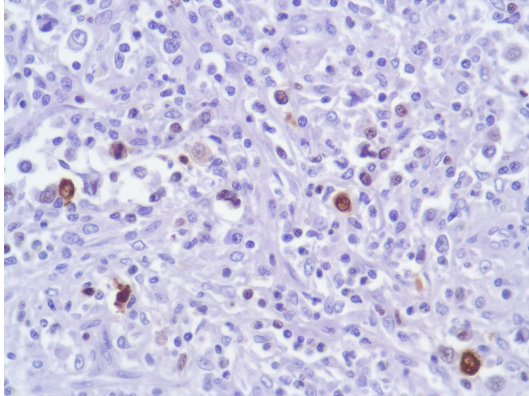
ARG53222 anti-Ki-67 antibody [SP6] IHC-P image

Immunohistochemistry: Human Fallopian Tube stained with Ki67 antibody [SP6] (ARG53222)



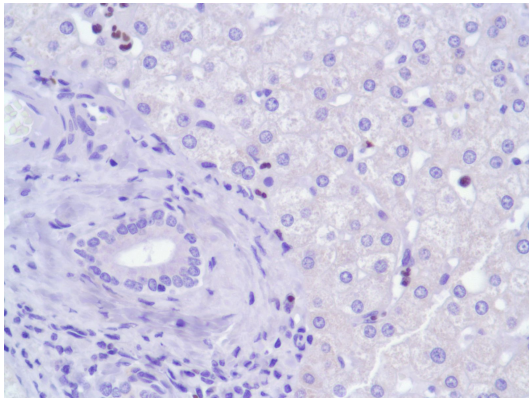
ARG53222 anti-Ki-67 antibody [SP6] IHC-P image

Immunohistochemistry: Human Hepatocellular Carcinoma stained with Ki67 antibody [SP6] (ARG53222)



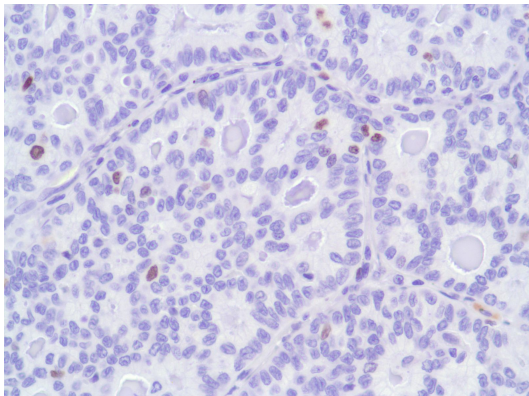
ARG53222 anti-Ki-67 antibody [SP6] IHC-P image

Immunohistochemistry: Human HK Lymphoma stained with Ki67 antibody [SP6] (ARG53222)



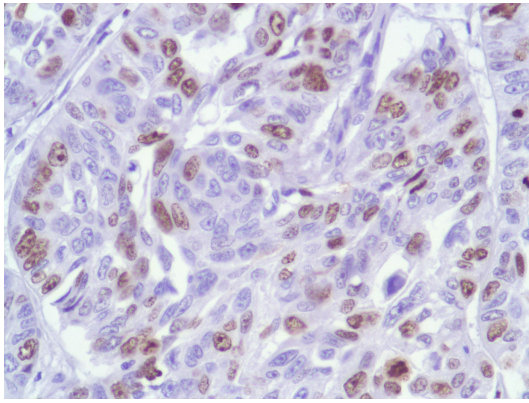
ARG53222 anti-Ki-67 antibody [SP6] IHC-P image

Immunohistochemistry: Human Liver stained with Ki67 antibody [SP6] (ARG53222)



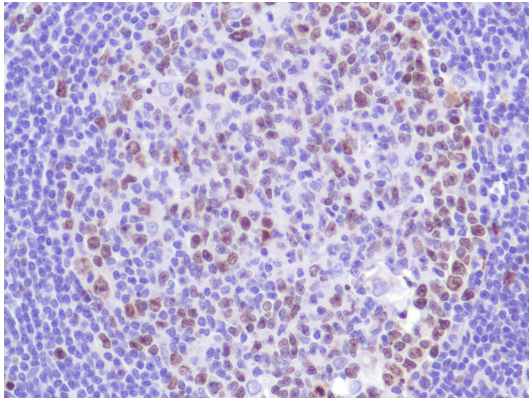
ARG53222 anti-Ki-67 antibody [SP6] IHC-P image

Immunohistochemistry: Human Lung Adenocarcinoma stained with Ki67 antibody [SP6] (ARG53222)



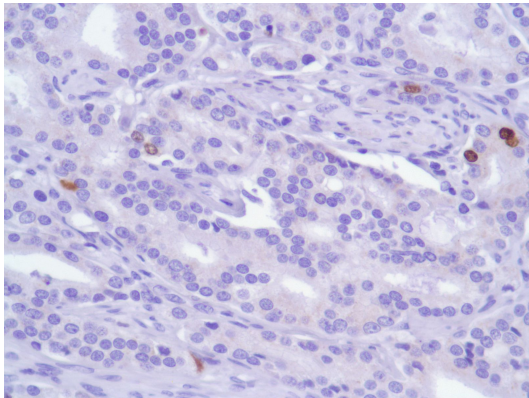
ARG53222 anti-Ki-67 antibody [SP6] IHC-P image

Immunohistochemistry: Human Lung Squamous Cell Carcinoma stained with Ki67 antibody [SP6] (ARG53222)



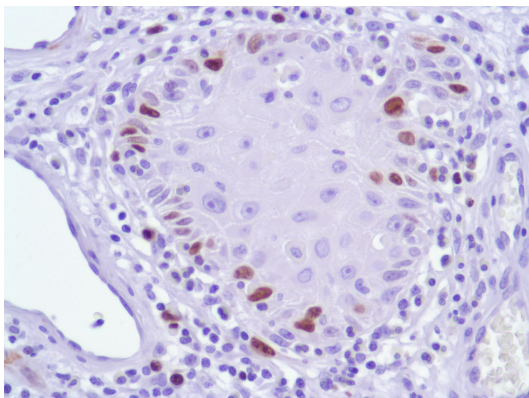
ARG53222 anti-Ki-67 antibody [SP6] IHC-P image

Immunohistochemistry: Human Lymph Node stained with Ki67 antibody [SP6] (ARG53222)



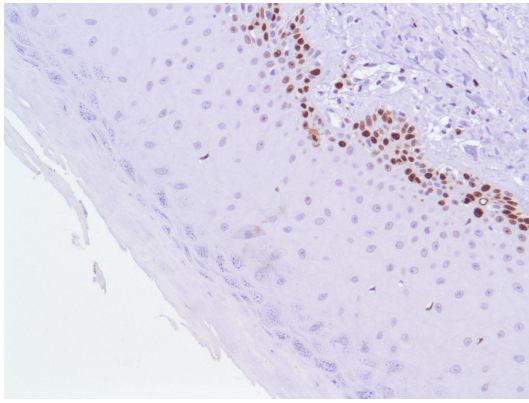
ARG53222 anti-Ki-67 antibody [SP6] IHC-P image

Immunohistochemistry: Human Prostate Adenocarcinoma stained with Ki67 antibody [SP6] (ARG53222)



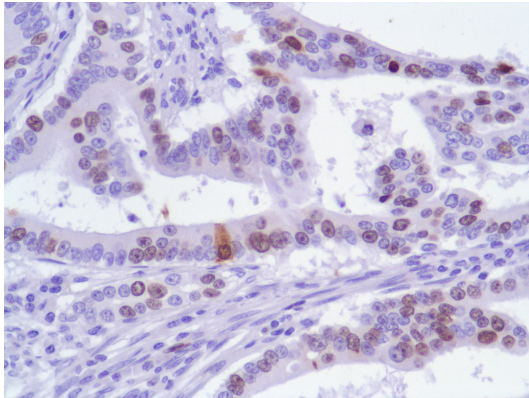
ARG53222 anti-Ki-67 antibody [SP6] IHC-P image

Immunohistochemistry: Human Skin Squamous Cell Carcinoma stained with Ki67 antibody [SP6] (ARG53222)



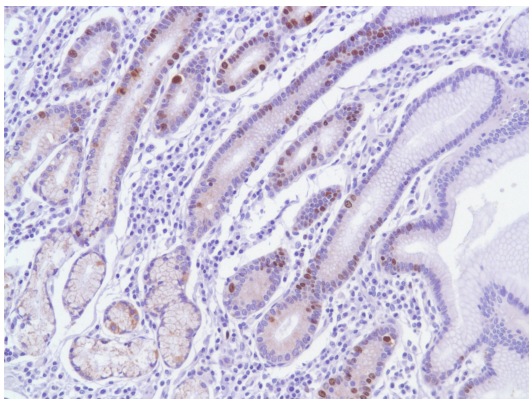
ARG53222 anti-Ki-67 antibody [SP6] IHC-P image

Immunohistochemistry: Human Skin stained with Ki67 antibody [SP6] (ARG53222)



ARG53222 anti-Ki-67 antibody [SP6] IHC-P image

Immunohistochemistry: Human Stomach Adenocarcinoma stained with Ki67 antibody [SP6] (ARG53222)



ARG53222 anti-Ki-67 antibody [SP6] IHC-P image

Immunohistochemistry: Human Stomach stained with Ki67 antibody [SP6] (ARG53222)
