

ARG53280 anti-MEF-2 antibody

Package: 500 µl
Store at: -20°C

Summary

Product Description	Rabbit Polyclonal antibody recognizes MEF-2
Tested Reactivity	Hu
Tested Application	IHC-P
Host	Rabbit
Clonality	Polyclonal
Isotype	IgG
Target Name	MEF2A
Antigen Species	Human
Immunogen	Synthetic peptide corresponding to aa 487-507 of human MEF-2.
Conjugation	Un-conjugated
Alternate Names	RSRFC4; RSRFC9; ADCAD1; mef2; Myocyte-specific enhancer factor 2A; Serum response factor-like protein 1

Application Instructions

Application table	Application	Dilution
	IHC-P	1:100
Application Note	IHC-P: Antigen Retrieval: Boil tissue section in 10mM citrate buffer, pH 6.0 for 10 min followed by cooling at RT for 20 min. Incubation Time: 30 min at RT. * The dilutions indicate recommended starting dilutions and the optimal dilutions or concentrations should be determined by the scientist.	
Positive Control	Brain	
Calculated Mw	55 kDa	

Properties

Form	Liquid
Purification	Immunogen affinity purified
Buffer	PBS (pH 7.6), 1% BSA and < 0.1% Sodium azide
Preservative	< 0.1% Sodium azide
Stabilizer	1% BSA
Storage instruction	For continuous use, store undiluted antibody at 2-8°C for up to a week. For long-term storage, aliquot and store at -20°C or below. Storage in frost free freezers is not recommended. Avoid repeated freeze/thaw cycles. Suggest spin the vial prior to opening. The antibody solution should be gently mixed before use.

Note For laboratory research only, not for drug, diagnostic or other use.

Bioinformation

Database links [GeneID: 4205 Human](#)

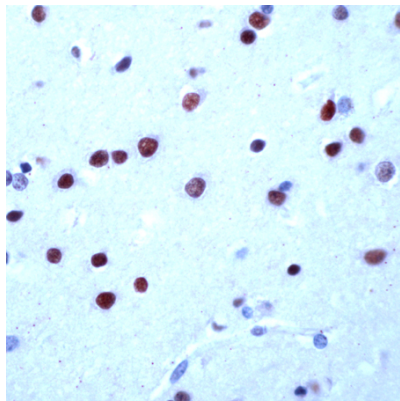
[Swiss-port # Q02078 Human](#)

Background The myocyte enhancer factors-2 (MEF-2) family of transcription factors associate with a variety of co-repressors or co-activators to regulate development and function of T cells, neuronal cells, and muscle cells. Four distinct family members arise from alternatively splices transcripts, termed MEF-2A, MEF-2B, MEF-2C, and MEF-2D. These members bind as homo- and heterodimers to the MEF-2 site in the promoter region of affected genes. Differential regulation in the expression of the 4 transcripts implies functional distinction for each during embryogenesis and development.

Resrarch Area Cell Biology and Cellular Response antibody; Gene Regulation antibody; Neuroscience antibody

Cellular Localization Nucleus

Images



ARG53280 anti-MEF-2 antibody IHC-P image

Immunohistochemistry: Human Brain stained with MEF-2 antibody (ARG53280)