

ARG53612 anti-Stathmin antibody [SP49]

Package: 100 µl, 50 µl
Store at: -20°C

Summary

Product Description	Rabbit Monoclonal antibody [SP49] recognizes Stathmin
Tested Reactivity	Hu
Tested Application	FACS, IHC-P, WB
Host	Rabbit
Clonality	Monoclonal
Clone	SP49
Isotype	IgG
Target Name	Stathmin
Species	Human
Immunogen	Synthetic peptide derived from internal region of human stathmin.
Conjugation	Un-conjugated
Alternate Names	PP17; ProsoLin; Stathmin; Protein Pr22; PR22; Lag; C1orf215; PP19; pp19; SMN; OP18; Leukemia-associated phosphoprotein p18; LAP18; pp17; Oncoprotein 18; Phosphoprotein p19; Op18; Metablastin

Application Instructions

Application table	Application	Dilution
	FACS	Assay-Dependent
	IHC-P	1:100
	WB	1:25 - 1:100
Application Note	IHC-P: Antigen Retrieval: Boil tissue section in 10mM citrate buffer, pH 6.0 for 10 min followed by cooling at RT for 20 min. Incubation Time: 30 min at RT. * The dilutions indicate recommended starting dilutions and the optimal dilutions or concentrations should be determined by the scientist.	
Positive Control	Tonsil, NIH/3T3	

Properties

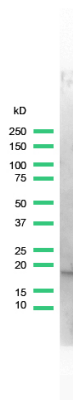
Form	Liquid
Purification	Purified by protein A/G
Buffer	PBS (pH 7.6), 1% BSA and < 0.1% Sodium azide
Preservative	< 0.1% Sodium azide
Stabilizer	1% BSA

Storage instruction	For continuous use, store undiluted antibody at 2-8°C for up to a week. For long-term storage, aliquot and store at -20°C or below. Storage in frost free freezers is not recommended. Avoid repeated freeze/thaw cycles. Suggest spin the vial prior to opening. The antibody solution should be gently mixed before use.
Note	For laboratory research only, not for drug, diagnostic or other use.

Bioinformation

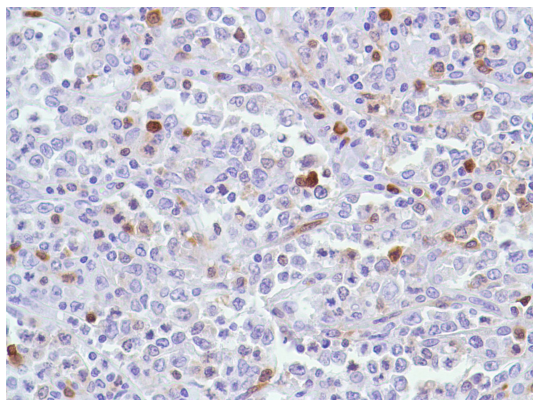
Database links	GeneID: 3925 Human Swiss-port # P16949 Human
Gene Symbol	STMN1
Gene Full Name	stathmin 1
Background	This gene belongs to the stathmin family of genes. It encodes a ubiquitous cytosolic phosphoprotein proposed to function as an intracellular relay integrating regulatory signals of the cellular environment. The encoded protein is involved in the regulation of the microtubule filament system by destabilizing microtubules. It prevents assembly and promotes disassembly of microtubules. Multiple transcript variants encoding different isoforms have been found for this gene. [provided by RefSeq, Feb 2009]
Function	Involved in the regulation of the microtubule (MT) filament system by destabilizing microtubules. Prevents assembly and promotes disassembly of microtubules. Phosphorylation at Ser-16 may be required for axon formation during neurogenesis. Involved in the control of the learned and innate fear (By similarity). [UniProt]
Research Area	Neuroscience antibody; Signaling Transduction antibody
Calculated Mw	17 kDa
PTM	Many different phosphorylated forms are observed depending on specific combinations among the sites which can be phosphorylated. MAPK is responsible for the phosphorylation of stathmin in response to NGF. Phosphorylation at Ser-16 seems to be required for neuron polarization (By similarity). Phosphorylation at Ser-63 reduces tubulin binding 10-fold and suppresses the MT polymerization inhibition activity.
Cellular Localization	Cytoplasm

Images



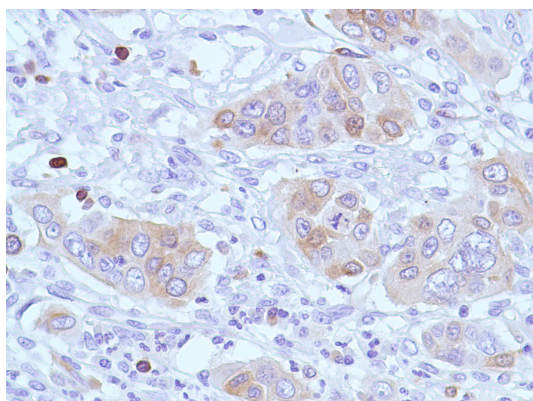
ARG53612 anti-Stathmin antibody [SP49] WB image

Western Blot: NIH3T3 stained with Stathmin antibody [SP49] (ARG53612)



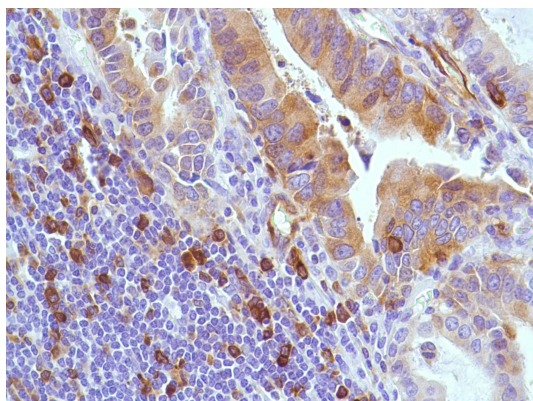
ARG53612 anti-Stathmin antibody [SP49] IHC-P image

Immunohistochemistry: Human B-Cell Lymphoma stained with Stathmin antibody [SP49] (ARG53612)



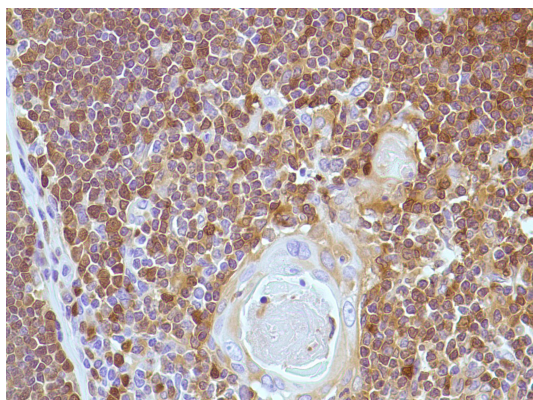
ARG53612 anti-Stathmin antibody [SP49] IHC-P image

Immunohistochemistry: Human Pancreatic Adenocarcinoma stained with Stathmin antibody [SP49] (ARG53612)



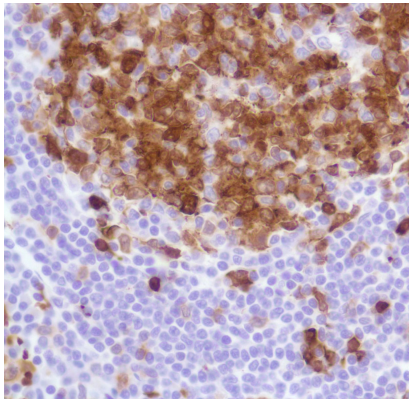
ARG53612 anti-Stathmin antibody [SP49] IHC-P image

Immunohistochemistry: Human Stomach Adenocarcinoma stained with Stathmin antibody [SP49] (ARG53612)



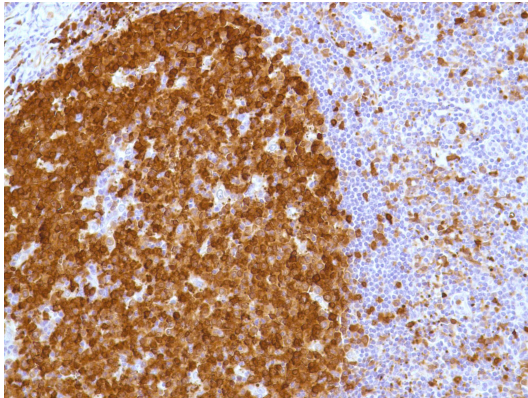
ARG53612 anti-Stathmin antibody [SP49] IHC-P image

Immunohistochemistry: Human Thymus stained with Stathmin antibody [SP49] (ARG53612)



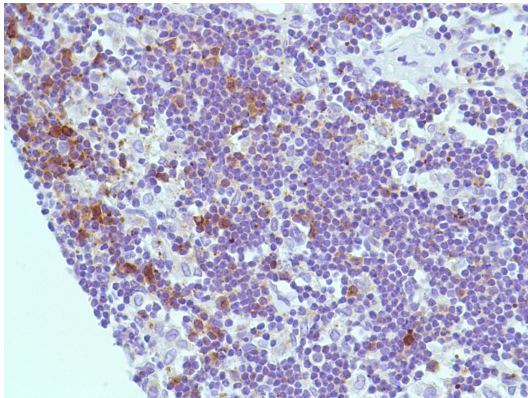
ARG53612 anti-Stathmin antibody [SP49] IHC-P image

Immunohistochemistry: Human Tonsil stained with Stathmin antibody [SP49] (ARG53612)



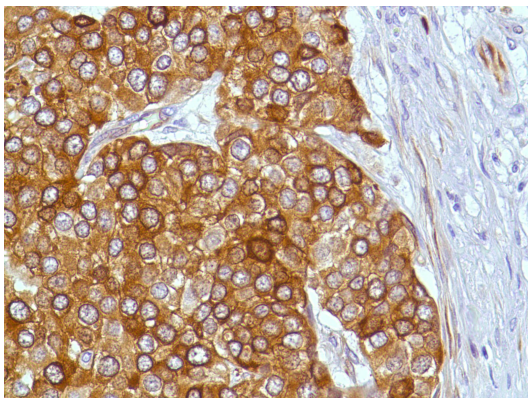
ARG53612 anti-Stathmin antibody [SP49] IHC-P image

Immunohistochemistry: Human Tonsil stained with Stathmin antibody [SP49] (ARG53612)



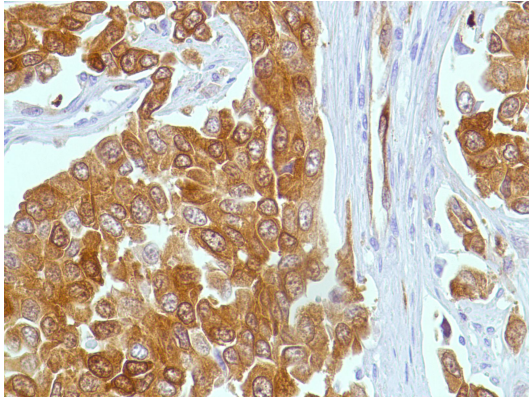
ARG53612 anti-Stathmin antibody [SP49] IHC-P image

Immunohistochemistry: Human Lymph Node stained with Stathmin antibody [SP49] (ARG53612)



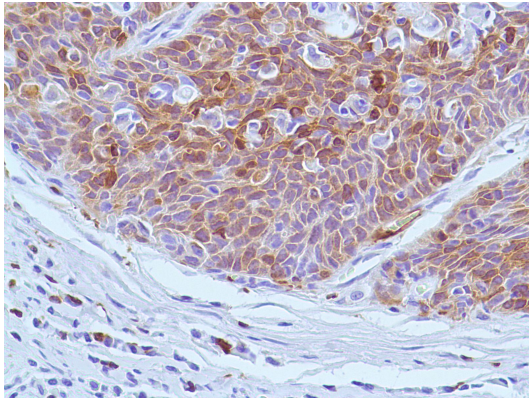
ARG53612 anti-Stathmin antibody [SP49] IHC-P image

Immunohistochemistry: Human Bladder Transitional Cell Carcinoma stained with Stathmin antibody [SP49] (ARG53612)



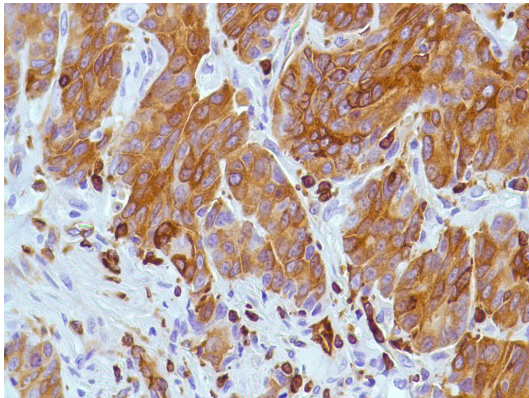
ARG53612 anti-Stathmin antibody [SP49] IHC-P image

Immunohistochemistry: Human Breast Ductal Cell Carcinoma stained with Stathmin antibody [SP49] (ARG53612)



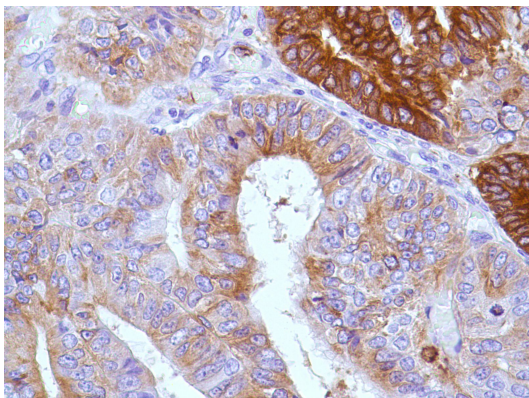
ARG53612 anti-Stathmin antibody [SP49] IHC-P image

Immunohistochemistry: Human Cervical Squamous Cell Carcinoma stained with Stathmin antibody [SP49] (ARG53612)



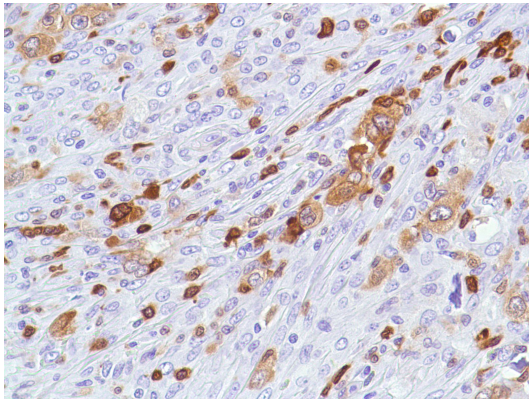
ARG53612 anti-Stathmin antibody [SP49] IHC-P image

Immunohistochemistry: Human Colon Adenocarcinoma stained with Stathmin antibody [SP49] (ARG53612)



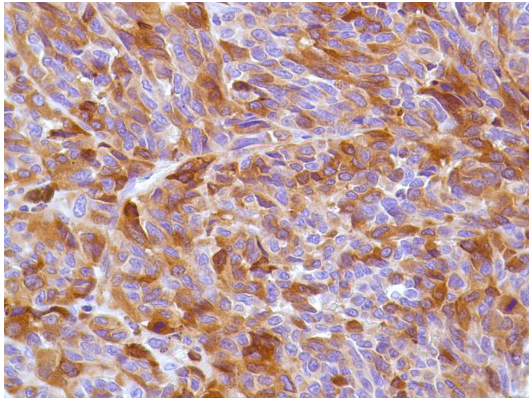
ARG53612 anti-Stathmin antibody [SP49] IHC-P image

Immunohistochemistry: Human Endometrium Adenocarcinoma stained with Stathmin antibody [SP49] (ARG53612)



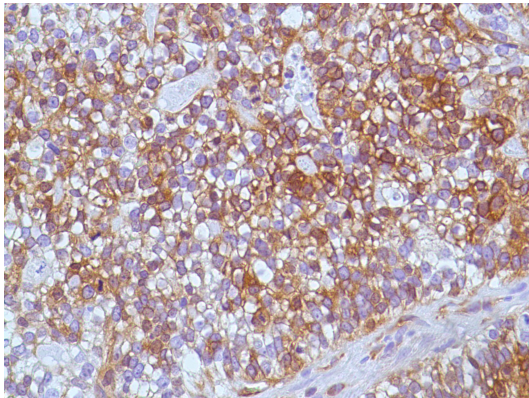
ARG53612 anti-Stathmin antibody [SP49] IHC-P image

Immunohistochemistry: Human HK Lymphoma stained with Stathmin antibody [SP49] (ARG53612)



ARG53612 anti-Stathmin antibody [SP49] IHC-P image

Immunohistochemistry: Human Melanoma stained with Stathmin antibody [SP49] (ARG53612)



ARG53612 anti-Stathmin antibody [SP49] IHC-P image

Immunohistochemistry: Human Ovarian Adenocarcinoma stained with Stathmin antibody [SP49] (ARG53612)
