

ARG53745 anti-Albumin antibody [AL-01] (Biotin)

Package: 100 µg
Store at: 4°C

Summary

| | |
|---------------------|--|
| Product Description | Biotin-conjugated Mouse Monoclonal antibody [AL-01] recognizes Albumin |
| Tested Reactivity | Hu |
| Tested Application | WB |
| Specificity | The clone AL-01 reacts only with human serum albumin, a 65-67 kDa monomeric protein in human blood plasma; it is produced in liver. No cross-reactivity was observed with other serum proteins. |
| Host | Mouse |
| Clonality | Monoclonal |
| Clone | AL-01 |
| Isotype | IgG1 |
| Target Name | Albumin |
| Species | Human |
| Immunogen | Fraction of proteins containing albumin after ammonium sulphate precipitation and DEAE-chromatography of human serum. |
| Conjugation | Biotin |
| Alternate Names | FDAH; PRO0883; PRO1341; Serum albumin; ANALBA; PRO0903 |

Application Instructions

| Application table | Application | Dilution |
|-------------------|--|-------------|
| | WB | 2 - 5 µg/ml |
| Application Note | * The dilutions indicate recommended starting dilutions and the optimal dilutions or concentrations should be determined by the scientist. | |

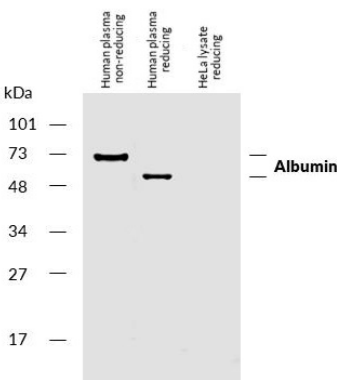
Properties

| | |
|---------------------|--|
| Form | Liquid |
| Purification Note | The purified antibody is conjugated with Biotin-LC-NHS under optimum conditions. The reagent is free of unconjugated biotin. |
| Buffer | PBS (pH 7.4) and 15 mM Sodium azide |
| Preservative | 15 mM Sodium azide |
| Concentration | 1 mg/ml |
| Storage instruction | Aliquot and store in the dark at 2-8°C. Keep protected from prolonged exposure to light. Avoid repeated freeze/thaw cycles. Suggest spin the vial prior to opening. The antibody solution should be gently mixed before use. |

Bioinformation

| | |
|----------------|---|
| Database links | GeneID: 213 Human Swiss-port # P02768 Human |
| Gene Symbol | ALB |
| Gene Full Name | albumin |
| Background | Human serum albumin (65-67 kDa) is the most abundant protein in human blood plasma (produced in the liver). It has a serum half-life of approximately 20 days. |
| Function | Serum albumin, the main protein of plasma, has a good binding capacity for water, Ca(2+), Na(+), K(+) , fatty acids, hormones, bilirubin and drugs. Its main function is the regulation of the colloidal osmotic pressure of blood. Major zinc transporter in plasma, typically binds about 80% of all plasma zinc. [UniProt] |
| Research Area | Cancer antibody; Cell Biology and Cellular Response antibody; Controls and Markers antibody; Developmental Biology antibody; Metabolism antibody; Signaling Transduction antibody |
| Calculated Mw | 69 kDa |
| PTM | Kenitra variant is partially O-glycosylated at Thr-620. It has two new disulfide bonds Cys-600 to Cys-602 and Cys-601 to Cys-606. Glycated in diabetic patients. Phosphorylated by FAM20C in the extracellular medium. Acetylated on Lys-223 by acetylsalicylic acid. |

Images



ARG53745 anti-Albumin antibody [AL-01] (Biotin) WB image

Western blot: Human plasma and HeLa cell lysate (negative control). The blots were stained with ARG53745 anti-Albumin antibody [AL-01] (Biotin) at 5 µg/ml dilution, under reducing and non-reducing conditions.