

ARG53758 anti-CD11a / LFA1 alpha antibody [MEM-25] (APC)

Package: 100 tests
Store at: 4°C

Summary

| | |
|---------------------|---|
| Product Description | APC-conjugated Mouse Monoclonal antibody [MEM-25] recognizes CD11a / LFA1 alpha |
| Tested Reactivity | Hu |
| Tested Application | FACS |
| Specificity | The clone MEM-25 reacts with CD11a (alpha subunit of human LFA-1), a 170-180 kDa type I transmembrane glycoprotein expressed on B and T lymphocytes, monocytes, macrophages, neutrophils, basophils and eosinophils. HLDA IV; WS Code NL 209 |
| Host | Mouse |
| Clonality | Monoclonal |
| Clone | MEM-25 |
| Isotype | IgG1 |
| Target Name | CD11a / LFA1 alpha |
| Immunogen | Leukocytes from a patient suffering from a LGL-type leukaemia. |
| Conjugation | APC |
| Alternate Names | Leukocyte adhesion glycoprotein LFA-1 alpha chain; LFA1A; LFA-1A; Integrin alpha-L; CD11A; Leukocyte function-associated molecule 1 alpha chain; LFA-1; CD11 antigen-like family member A; CD antigen CD11a |

Application Instructions

| Application table | Application | Dilution |
|-------------------|-------------|-------------------------------|
| | FACS | 10 µl / 10 ⁶ cells |

Application Note * The dilutions indicate recommended starting dilutions and the optimal dilutions or concentrations should be determined by the scientist.

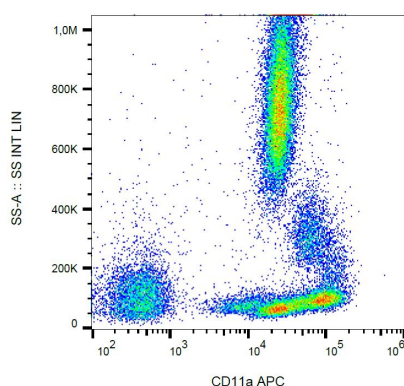
Properties

| | |
|---------------------|---|
| Form | Liquid |
| Purification Note | The purified antibody is conjugated with cross-linked Allophycocyanin (APC) under optimum conditions. The conjugate is purified by size-exclusion chromatography and adjusted for direct use. No reconstitution is necessary. |
| Buffer | PBS, 15 mM Sodium azide and 0.2% (w/v) high-grade protease free BSA |
| Preservative | 15 mM Sodium azide |
| Stabilizer | 0.2% (w/v) high-grade protease free BSA |
| Storage instruction | Aliquot and store in the dark at 2-8°C. Keep protected from prolonged exposure to light. Avoid repeated freeze/thaw cycles. Suggest spin the vial prior to opening. The antibody solution should be gently mixed before use. |

Bioinformation

| | |
|----------------|---|
| Database links | GeneID: 3683 Human Swiss-port # P20701 Human |
| Gene Symbol | ITGAL |
| Gene Full Name | integrin, alpha L (antigen CD11A (p180), lymphocyte function-associated antigen 1; alpha polypeptide) |
| Background | CD11a (LFA-1 alpha) together with CD18 constitute leukocyte function-associated antigen 1 (LFA-1), the alphaLbeta2 integrin. CD11a is implicated in activation of LFA-1 complex. LFA-1 is expressed on the plasma membrane of leukocytes in a low-affinity conformation. Cell stimulation by chemokines or other signals leads to induction the high-affinity conformation, which supports tight binding of LFA-1 to its ligands, the intercellular adhesion molecules ICAM-1, -2, -3. LFA-1 is thus involved in interaction of various immune cells and in their tissue-specific settlement, but participates also in control of cell differentiation and proliferation and of T-cell effector functions. Blocking of LFA-1 function by specific antibodies or small molecules has become an important therapeutic approach in treatment of multiple inflammatory diseases. For example, humanized anti-LFA-1 antibody Efalizumab (Raptiva) is being used to interfere with T cell migration to sites of inflammation; binding of cholesterol-lowering drug simvastatin to CD11a allosteric site leads to immunomodulation and increase in lymphocytic cholinergic activity. |
| Function | Integrin alpha-L/beta-2 is a receptor for ICAM1, ICAM2, ICAM3 and ICAM4. It is involved in a variety of immune phenomena including leukocyte-endothelial cell interaction, cytotoxic T-cell mediated killing, and antibody dependent killing by granulocytes and monocytes. [UniProt] |
| Research Area | Developmental Biology antibody; Immune System antibody; Signaling Transduction antibody |
| Calculated Mw | 129 kDa |
| PTM | In resting T-cells, up to 40% of surface ITGAL is constitutively phosphorylated. Phosphorylation causes conformational changes needed for ligand binding and is necessary for activation by some physiological agents. |

Images



ARG53758 anti-CD11a / LFA1 alpha antibody [MEM-25] (APC) FACS image

Flow Cytometry: Human peripheral blood cells stained with ARG53758 anti-CD11a / LFA1 alpha antibody [MEM-25] (APC).