

## ARG53760 anti-CD11b antibody [MEM-174] (PE)

Package: 100 tests  
Store at: 4°C

### Summary

Product Description	PE-conjugated Mouse Monoclonal antibody [MEM-174] recognizes CD11b
Tested Reactivity	Hu
Tested Application	FACS
Specificity	The clone MEM-174 recognizes CD11b antigen (Mac-1 alpha), a 165-170 kDa type I transmembrane protein mainly expressed on monocytes, granulocytes and NK-cells. The CD11b mediates neutrophil and monocyte interactions with stimulated endothelium. HLDA VI; WS Code BP 310 HLDA VI; WS Code M 18
Host	Mouse
Clonality	Monoclonal
Clone	MEM-174
Isotype	IgG2a
Target Name	CD11b
Species	Human
Immunogen	Human granulocytes
Conjugation	PE
Alternate Names	MAC1A; CR3A; CR-3 alpha chain; Cell surface glycoprotein MAC-1 subunit alpha; Integrin alpha-M; MAC-1; CD11 antigen-like family member B; Leukocyte adhesion receptor MO1; MO1A; SLEB6; Neutrophil adherence receptor; CD antigen CD11b; CD11B

### Application Instructions

Application table	Application	Dilution
	FACS	20 µl / 10 <sup>6</sup> cells
Application Note	* The dilutions indicate recommended starting dilutions and the optimal dilutions or concentrations should be determined by the scientist.	

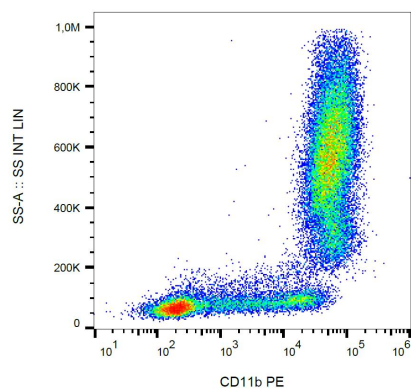
### Properties

Form	Liquid
Purification Note	The purified antibody is conjugated with R-Phycoerythrin (PE) under optimum conditions. The conjugate is purified by size-exclusion chromatography and adjusted for direct use. No reconstitution is necessary.
Buffer	PBS, 15 mM Sodium azide and 0.2% (w/v) high-grade protease free BSA
Preservative	15 mM Sodium azide
Stabilizer	0.2% (w/v) high-grade protease free BSA

Storage instruction	Aliquot and store in the dark at 2-8°C. Keep protected from prolonged exposure to light. Avoid repeated freeze/thaw cycles. Suggest spin the vial prior to opening. The antibody solution should be gently mixed before use.
Note	For laboratory research only, not for drug, diagnostic or other use.

## Bioinformation

Database links	<a href="#">GeneID: 3684 Human</a> <a href="#">Swiss-port # P11215 Human</a>
Gene Symbol	ITGAM
Gene Full Name	integrin, alpha M (complement component 3 receptor 3 subunit)
Background	<p>CD11b (integrin alpha M chain): Integrins are heterodimeric integral membrane proteins composed of an alpha chain and a beta chain. This I-domain containing alpha integrin combines with the beta 2 chain (ITGB2) to form a leukocyte-specific integrin referred to as macrophage receptor 1 ('Mac-1'), or inactivated-C3b (iC3b) receptor 3 ('CR3'). The alpha M beta 2 integrin is important in the adherence of neutrophils and monocytes to stimulated endothelium, and also in the phagocytosis of complement coated particles. Multiple transcript variants encoding different isoforms have been found for this gene. [provided by RefSeq, Mar 2009]</p>
Function	<p>CD11b: Integrin ITGAM/ITGB2 is implicated in various adhesive interactions of monocytes, macrophages and granulocytes as well as in mediating the uptake of complement-coated particles and pathogens (PubMed:9558116, PubMed:20008295). It is identical with CR-3, the receptor for the iC3b fragment of the third complement component. It probably recognizes the R-G-D peptide in C3b. Integrin ITGAM/ITGB2 is also a receptor for fibrinogen, factor X and ICAM1. It recognizes P1 and P2 peptides of fibrinogen gamma chain. Regulates neutrophil migration (PubMed:28807980). In association with beta subunit ITGB2/CD18, required for CD177-PRTN3-mediated activation of TNF primed neutrophils (PubMed:21193407). May regulate phagocytosis-induced apoptosis in extravasated neutrophils. May play a role in mast cell development. Required with TYROBP/DAP12 in microglia to control production of microglial superoxide ions which promote the neuronal apoptosis that occurs during brain development. [UniProt]</p>
Highlight	<p>Related products:  <a href="#">CD11b antibodies</a>; <a href="#">CD11b Duos / Panels</a>; <a href="#">Anti-Mouse IgG secondary antibodies</a>;  Related news:  <a href="#">New antibody panels and duos for Tumor immune microenvironment</a>  <a href="#">Anti-SerpinB9 therapy, a new strategy for cancer therapy</a></p>
Research Area	MDSC Marker antibody; Myeloid-derived suppressor cell antibody
Calculated Mw	127 kDa



ARG53760 anti-CD11b antibody [MEM-174] (PE) FACS image

Flow Cytometry: Human peripheral blood stained with ARG53760 anti-CD11b antibody [MEM-174] (PE).