

ARG53879 anti-CD56 / NCAM antibody [MEM-188] (PerCP)

Package: 100 tests, 50 tests
Store at: 4°C

Summary

Product Description	PerCP-conjugated Mouse Monoclonal antibody [MEM-188] recognizes CD56 / NCAM
Tested Reactivity	Hu, NHuPrm
Tested Application	FACS
Specificity	The clone MEM-188 reacts with a 180 kDa isoform of CD56 (NCAM) expressed in leukocytes. It has been suggested that the antibody MEM-188 could react with rhesus monkey lymphocytes. Reactivity with other NCAM isoforms has not been tested. HLDA VI; WS code A055 HLDA VI; WS Code NK26 HLDA VII; WS code 70077
Host	Mouse
Clonality	Monoclonal
Clone	MEM-188
Isotype	IgG2a
Target Name	CD56 / NCAM
Species	Human
Immunogen	KG-1 human acute myelogenous leukemia cell line
Conjugation	PerCP
Alternate Names	CD56; NCAM; CD antigen CD56; N-CAM-1; MSK39; NCAM-1; Neural cell adhesion molecule 1

Application Instructions

Application table	<table><thead><tr><th>Application</th><th>Dilution</th></tr></thead><tbody><tr><td>FACS</td><td>10 µl / 10⁶ cells</td></tr></tbody></table>	Application	Dilution	FACS	10 µl / 10 ⁶ cells
Application	Dilution				
FACS	10 µl / 10 ⁶ cells				
Application Note	* The dilutions indicate recommended starting dilutions and the optimal dilutions or concentrations should be determined by the scientist.				

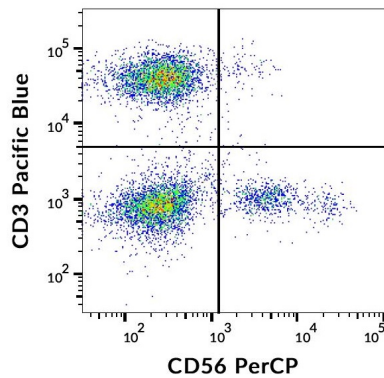
Properties

Form	Liquid
Buffer	PBS, 15 mM Sodium azide and 0.2% (w/v) high-grade protease free BSA
Preservative	15 mM Sodium azide
Stabilizer	0.2% (w/v) high-grade protease free BSA
Storage instruction	Aliquot and store in the dark at 2-8°C. Keep protected from prolonged exposure to light. Avoid repeated freeze/thaw cycles. Suggest spin the vial prior to opening. The antibody solution should be gently mixed before use.
Note	For laboratory research only, not for drug, diagnostic or other use.

Bioinformation

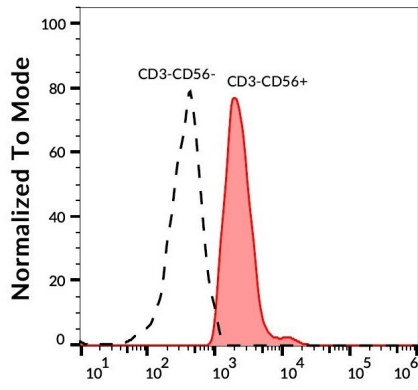
Database links	GeneID: 4684 Human Swiss-port # P13591 Human
Gene Symbol	NCAM1
Gene Full Name	neural cell adhesion molecule 1
Background	CD56 (NCAM, neural cell adhesion molecule) is a transmembrane glycoprotein of immunoglobulin family serving as adhesive molecule which is ubiquitously expressed in nervous system, usually as 120 kDa, 140 kDa or 180 kDa isoform, and it is also found on T cells and NK cells. Polysialic modification results in reduction of CD56-mediated cell adhesion and is involved in cell migration, axonal growth, pathfinding and synaptic plasticity. CD56 is a widely used neuroendocrine marker with a high sensitivity for neuroendocrine tumours and ovarian granulosa cell tumours.
Function	This protein is a cell adhesion molecule involved in neuron-neuron adhesion, neurite fasciculation, outgrowth of neurites, etc. [UniProt]
Highlight	Related Antibody Duos and Panels: ARG30313 General Lymphocyte Marker Antibody Panel (CD3, CD14, CD16, CD19, CD56) Related products: CD56 antibodies ; CD56 ELISA Kits ; CD56 Duos / Panels ; Anti-Mouse IgG secondary antibodies ; Related news: Exercise encourages NK cell mobilization to shrink tumors Tumor-Infiltrating Lymphocytes (TILs)
Research Area	Developmental Biology antibody; Neuroscience antibody; General Lymphocyte Marker Study antibody; Natural killer cells antibody
Calculated Mw	95 kDa

Images



ARG53879 anti-CD56 / NCAM antibody [MEM-188] (PerCP) FACS image

Flow Cytometry: Human peripheral blood lymphocytes stained with ARG53879 anti-CD56 / NCAM antibody [MEM-188] (PerCP).



ARG53879 anti-CD56 / NCAM antibody [MEM-188] (PerCP) FACS image

Flow Cytometry: Human peripheral blood lymphocytes stained with ARG53879 anti-CD56 / NCAM antibody [MEM-188] (PerCP).