

ARG53880 anti-CD58 antibody [MEM-63] (PE)

Package: 100 tests
Store at: 4°C

Summary

Product Description	PE-conjugated Mouse Monoclonal antibody [MEM-63] recognizes CD58
Tested Reactivity	Hu, Pig
Tested Application	FACS
Specificity	The clone MEM-63 reacts with CD58 (LFA-3), a 40-70 kDa glycoprotein distributed over many tissues, leukocytes, erythrocytes, endothelial cells, epithelial cells and fibroblasts. HLDA VI; WS Code AS A047
Host	Mouse
Clonality	Monoclonal
Clone	MEM-63
Isotype	IgG1
Target Name	CD58
Species	Human
Immunogen	NALM-6 human pre-B cell line
Conjugation	PE
Alternate Names	CD antigen CD58; LFA3; ag3; Lymphocyte function-associated antigen 3; Surface glycoprotein LFA-3; Ag3; LFA-3

Application Instructions

Application table	Application	Dilution
	FACS	20 µl / 10 ⁶ cells
Application Note	* The dilutions indicate recommended starting dilutions and the optimal dilutions or concentrations should be determined by the scientist.	

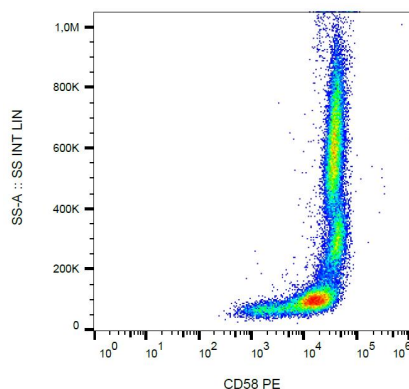
Properties

Form	Liquid
Purification Note	The purified antibody is conjugated with R-Phycoerythrin (PE) under optimum conditions. The conjugate is purified by size-exclusion chromatography and adjusted for direct use. No reconstitution is necessary.
Buffer	TBS, 15 mM Sodium azide and 0.2% (w/v) high-grade protease free BSA
Preservative	15 mM Sodium azide
Stabilizer	0.2% (w/v) high-grade protease free BSA
Storage instruction	Aliquot and store in the dark at 2-8°C. Keep protected from prolonged exposure to light. Avoid repeated freeze/thaw cycles. Suggest spin the vial prior to opening. The antibody solution should be gently mixed before use.

Bioinformation

Database links	GeneID: 965 Human Swiss-port # P19256 Human
Gene Symbol	CD58
Gene Full Name	CD58 molecule
Background	CD58 (LFA-3) is an immunoglobulin family adhesion molecule expressed by both hematopoietic and non-hematopoietic cells (often on antigen presenting cells) and serving as ligand of CD2. This interaction is important for T cell-mediated immunity. CD58 is expressed in transmembrane form and in GPI-anchored form; the later is constitutively associated with protein kinases whereas the transmembrane form activates kinase activity upon triggering. CD58 is a powerful tool for detection of minimal residual disease in acute lymphocytic leukemia, and for evaluation of liver damage related with hepatitis B.
Function	Ligand of the T-lymphocyte CD2 glycoprotein. This interaction is important in mediating thymocyte interactions with thymic epithelial cells, antigen-independent and -dependent interactions of T-lymphocytes with target cells and antigen-presenting cells and the T-lymphocyte rosetting with erythrocytes. In addition, the LFA-3/CD2 interaction may prime response by both the CD2+ and LFA-3+ cells. [UniProt]
Research Area	Immune System antibody
Calculated Mw	28 kDa

Images



ARG53880 anti-CD58 antibody [MEM-63] (PE) FACS image

Flow Cytometry: Human peripheral blood cells stained with ARG53880 anti-CD58 antibody [MEM-63] (PE).