

## ARG53930 anti-EGFR phospho (Tyr1173) antibody [EM-13]

Package: 50 µg  
Store at: -20°C

### Summary

Product Description	Mouse Monoclonal antibody [EM-13] recognizes EGFR phospho (Tyr1173)
Tested Reactivity	Hu
Tested Application	FACS, IP, WB
Specificity	The clone EM-13 reacts with human EGFR (ErbB1 / HER1) phosphorylated on tyrosine 1173.
Host	Mouse
Clonality	Monoclonal
Clone	EM-13
Isotype	IgG1
Target Name	EGFR
Species	Human
Immunogen	Synthetic phospho-peptide covering sequence around tyrosine 1173 of human EGFR.
Conjugation	Un-conjugated
Alternate Names	PIG61; ERBB1; Proto-oncogene c-ErbB-1; Receptor tyrosine-protein kinase erbB-1; NISBD2; Epidermal growth factor receptor; ERBB; HER1; EC 2.7.10.1; mENA

### Application Instructions

Application table	Application	Dilution
	FACS	1 - 4 µg/ml
	IP	Assay-dependent
	WB	1 µg/ml
Application Note	* The dilutions indicate recommended starting dilutions and the optimal dilutions or concentrations should be determined by the scientist.	
Positive Control	WB: Positive control: EGF-stimulated A431. Negative control: Non-stimulated A431.	

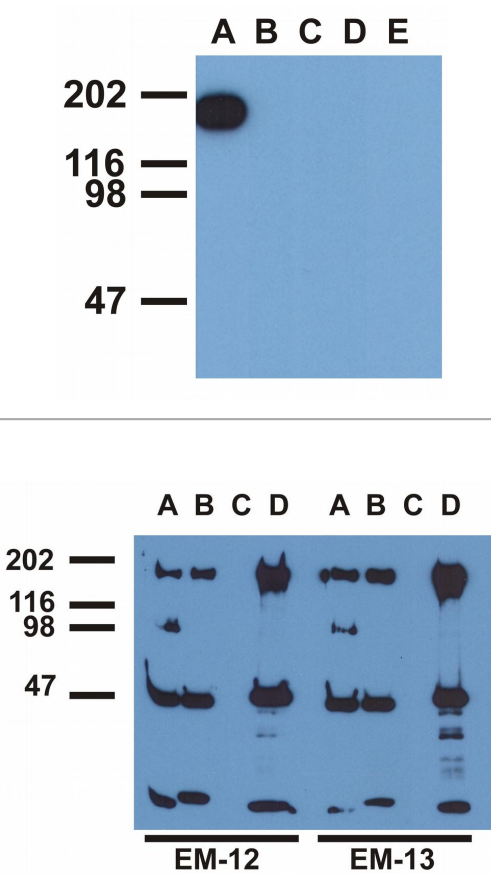
### Properties

Form	Liquid
Purification	Purified from hybridoma culture supernatant by protein-A affinity chromatography.
Purity	> 95% (by SDS-PAGE)
Buffer	PBS (pH 7.4) and 15 mM Sodium azide
Preservative	15 mM Sodium azide
Concentration	1 mg/ml

Storage instruction	For continuous use, store undiluted antibody at 2-8°C for up to a week. For long-term storage, aliquot and store at -20°C or below. Storage in frost free freezers is not recommended. Avoid repeated freeze/thaw cycles. Suggest spin the vial prior to opening. The antibody solution should be gently mixed before use.
Note	For laboratory research only, not for drug, diagnostic or other use.

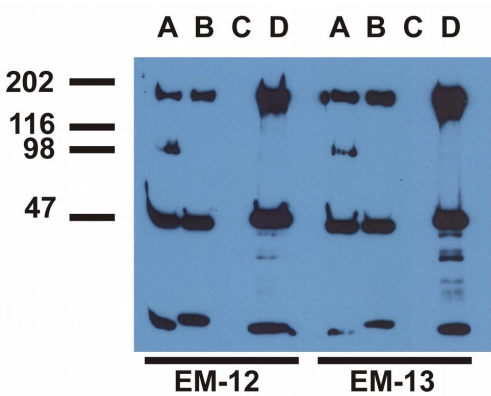
## Bioinformation

Database links	<a href="#">GeneID: 1956 Human</a>  <a href="#">Swiss-port # P00533 Human</a>
Gene Symbol	EGFR
Gene Full Name	epidermal growth factor receptor
Background	EGFR is a transmembrane glycoprotein. It is a member of the protein kinase superfamily. This protein is a receptor for members of the epidermal growth factor family. EGFR is a cell surface protein that binds to epidermal growth factor. Binding of the protein to a ligand induces receptor dimerization and tyrosine autophosphorylation and leads to cell proliferation. Mutations in this gene are associated with lung cancer. [provided by RefSeq, Jun 2016]
Function	<p>EGFR: Receptor tyrosine kinase binding ligands of the EGF family and activating several signaling cascades to convert extracellular cues into appropriate cellular responses (PubMed:2790960, PubMed:10805725, PubMed:27153536). Known ligands include EGF, TGFA/TGF-alpha, AREG, epigen/EPGN, BTC/betacellulin, epiregulin/EREG and HBEGF/heparin-binding EGF (PubMed:2790960, PubMed:7679104, PubMed:8144591, PubMed:9419975, PubMed:15611079, PubMed:12297049, PubMed:27153536, PubMed:20837704). Ligand binding triggers receptor homo- and/or heterodimerization and autophosphorylation on key cytoplasmic residues. The phosphorylated receptor recruits adapter proteins like GRB2 which in turn activates complex downstream signaling cascades. Activates at least 4 major downstream signaling cascades including the RAS-RAF-MEK-ERK, PI3 kinase-AKT, PLCgamma-PKC and STATs modules (PubMed:27153536). May also activate the NF-kappa-B signaling cascade (PubMed:11116146). Also directly phosphorylates other proteins like RGS16, activating its GTPase activity and probably coupling the EGF receptor signaling to the G protein-coupled receptor signaling (PubMed:11602604). Also phosphorylates MUC1 and increases its interaction with SRC and CTNNB1/beta-catenin (PubMed:11483589). Plays a role in enhancing learning and memory performance.</p> <p>Isoform 2 may act as an antagonist of EGF action.</p> <p>(Microbial infection) Acts as a receptor for hepatitis C virus (HCV) in hepatocytes and facilitates its cell entry. Mediates HCV entry by promoting the formation of the CD81-CLDN1 receptor complexes that are essential for HCV entry and by enhancing membrane fusion of cells expressing HCV envelope glycoproteins. [UniProt]</p>
Research Area	Cancer antibody; Signaling Transduction antibody
Calculated Mw	134 kDa
PTM	<p>Phosphorylation at Ser-695 is partial and occurs only if Thr-693 is phosphorylated. Phosphorylation at Thr-678 and Thr-693 by PRKD1 inhibits EGF-induced MAPK8/JNK1 activation. Dephosphorylation by PTPRJ prevents endocytosis and stabilizes the receptor at the plasma membrane. Autophosphorylation at Tyr-1197 is stimulated by methylation at Arg-1199 and enhances interaction with PTPN6. Autophosphorylation at Tyr-1092 and/or Tyr-1110 recruits STAT3. Dephosphorylated by PTPN1 and PTPN2.</p> <p>Monoubiquitinated and polyubiquitinated upon EGF stimulation; which does not affect tyrosine kinase activity or signaling capacity but may play a role in lysosomal targeting. Polyubiquitin linkage is mainly through 'Lys-63', but linkage through 'Lys-48', 'Lys-11' and 'Lys-29' also occurs. Deubiquitination by OTUD7B prevents degradation. Ubiquitinated by RNF115 and RNF126 (By similarity).</p> <p>Methylated. Methylation at Arg-1199 by PRMT5 stimulates phosphorylation at Tyr-1197.</p>



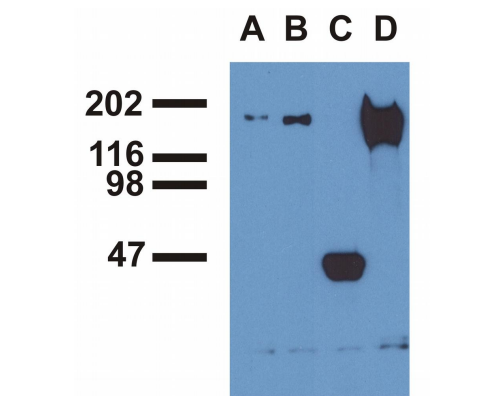
ARG53930 anti-EGFR phospho (Tyr1173) antibody [EM-13] WB image

Western blot: A. EGF-treated A431 cell lysate, B. CALU-3 cell lysate, C. MCF-7 cell lysate, D. Jurkat cell lysate, E. RAMOS cell lysate stained with ARG53930 anti-EGFR phospho (Tyr1173) antibody [EM-13].



ARG53930 anti-EGFR phospho (Tyr1173) antibody [EM-13] IP image

Immunoprecipitation: EGF-treated A431 cell was immunoprecipitated with (A) EM-12 antibody, (B) ARG53930 anti-EGFR phospho (Tyr1173) antibody [EM-13], (C) anti-EGFR commercial polyclonal antibody, (D) anti-EGFR monoclonal mAb108 antibody. The precipitates were stained with EM-12 or EM-13 antibody.



ARG53930 anti-EGFR phospho (Tyr1173) antibody [EM-13] IP image

Immunoprecipitation: EGF-treated A431 cell was immunoprecipitated with (A) EM-12 antibody, (B) ARG53930 anti-EGFR phospho (Tyr1173) antibody [EM-13], (C) anti-EGFR commercial polyclonal antibody, (D) anti-EGFR monoclonal mAb108 antibody. The precipitates were stained with commercial anti-EGFR polyclonal antibody.