

ARG54036 anti-Albumin antibody

Package: 100 µl
Store at: -20°C

Summary

Product Description	Mouse Monoclonal antibody recognizes Albumin
Tested Reactivity	Hu, Ms
Tested Application	ELISA, IP, WB
Host	Mouse
Clonality	Monoclonal
Isotype	IgG1
Target Name	Albumin
Species	Human
Immunogen	Purified Human serum albumin.
Conjugation	Un-conjugated
Alternate Names	FDAH; PRO0883; PRO1341; Serum albumin; ANALBA; PRO0903; HSA

Application Instructions

Application table	Application	Dilution
	ELISA	Assay-dependent
	IP	Assay-dependent
	WB	1:1000
Application Note	* The dilutions indicate recommended starting dilutions and the optimal dilutions or concentrations should be determined by the scientist.	

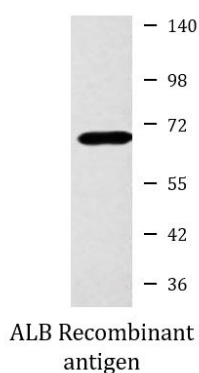
Properties

Form	Liquid
Purification	Affinity purified
Buffer	PBS (pH 7.4), 0.02% Sodium azide and 50% Glycerol
Preservative	0.02% Sodium azide
Stabilizer	50% Glycerol
Concentration	2 mg/ml
Storage instruction	For continuous use, store undiluted antibody at 2-8°C for up to a week. For long-term storage, aliquot and store at -20°C. Storage in frost free freezers is not recommended. Avoid repeated freeze/thaw cycles. Suggest spin the vial prior to opening. The antibody solution should be gently mixed before use.
Note	For laboratory research only, not for drug, diagnostic or other use.

Bioinformation

Database links	GeneID: 11657 Mouse GeneID: 213 Human Swiss-port # P02768 Human Swiss-port # P07724 Mouse
Gene Symbol	ALB
Gene Full Name	albumin
Background	Serum albumin,the main protein of plasma,has a good binding capacity for water,Ca ²⁺ ,Na ⁺ ,K ⁺ ,fatty acids,hormones,bilirubin and drugs.Its main function is the regulation of the colloidal osmotic pressure of blood.Major zinc transporter in plasma,typically binds about 80% of all plasma zinc.
Function	Serum albumin, the main protein of plasma, has a good binding capacity for water, Ca ²⁺ , Na ⁺ , K ⁺ , fatty acids, hormones, bilirubin and drugs. Its main function is the regulation of the colloidal osmotic pressure of blood. Major zinc transporter in plasma, typically binds about 80% of all plasma zinc. [UniProt]
Research Area	Cancer antibody; Cell Biology and Cellular Response antibody; Controls and Markers antibody; Developmental Biology antibody; Metabolism antibody; Signaling Transduction antibody
Calculated Mw	69 kDa
PTM	Kenitra variant is partially O-glycosylated at Thr-620. It has two new disulfide bonds Cys-600 to Cys-602 and Cys-601 to Cys-606. Glycated in diabetic patients. Phosphorylated by FAM20C in the extracellular medium. Acetylated on Lys-223 by acetylsalicylic acid.
Cellular Localization	Secreted.

Images



ARG54036 anti-Albumin antibody WB image

Western blot: 5 ng of ALB Recombinant antigen stained with ARG54036 anti-Albumin antibody at 1:1000 dilution.