

ARG54051 anti-Cytokeratin 18 antibody

Package: 100 µl, 50 µl
Store at: -20°C

Summary

Product Description	Mouse Monoclonal antibody recognizes Cytokeratin 18
Tested Reactivity	Hu, Mk
Tested Application	ICC/IF, WB
Host	Mouse
Clonality	Monoclonal
Isotype	IgG2a
Target Name	Cytokeratin 18
Species	Human
Immunogen	Purified recombinant Human Cytokeratin 18 protein fragments expressed in E. coli.
Conjugation	Un-conjugated
Alternate Names	Keratin, type I cytoskeletal 18; Cytokeratin-18; K18; CK-18; Cell proliferation-inducing gene 46 protein; Keratin-18; CYK18

Application Instructions

Application table	Application	Dilution
	ICC/IF	1:800
	WB	1:2000
Application Note	* The dilutions indicate recommended starting dilutions and the optimal dilutions or concentrations should be determined by the scientist.	
Observed Size	46 kDa	

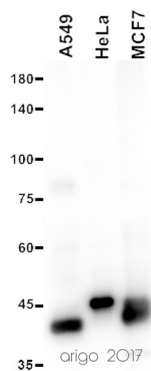
Properties

Form	Liquid
Purification	Affinity purified
Buffer	PBS (pH 7.4), 0.02% Sodium azide, 0.1mg/ml BSA and 50% Glycerol
Preservative	0.02% Sodium azide
Stabilizer	0.1mg/ml BSA, 50% Glycerol
Concentration	0.25 mg/ml
Storage instruction	For continuous use, store undiluted antibody at 2-8°C for up to a week. For long-term storage, aliquot and store at -20°C. Storage in frost free freezers is not recommended. Avoid repeated freeze/thaw cycles. Suggest spin the vial prior to opening. The antibody solution should be gently mixed before use.
Note	For laboratory research only, not for drug, diagnostic or other use.

Bioinformation

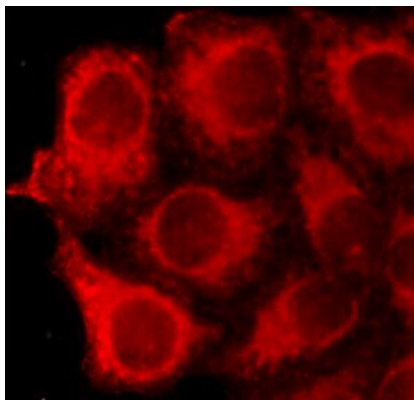
Database links	GeneID: 3875 Human Swiss-port # P05783 Human
Gene Symbol	KRT18
Gene Full Name	keratin 18, type I
Background	Cytokeratin 18, together with its filament partner Cytokeratin 8, are perhaps the most commonly found members of the intermediate filament gene family. They are expressed in single layer epithelial tissues of the body. Mutations in this gene have been linked to cryptogenic cirrhosis. Two transcript variants encoding the same protein have been found for this gene. [provided by RefSeq, Jul 2008]
Function	Cytokeratin 18 involved in the uptake of thrombin-antithrombin complexes by hepatic cells. When phosphorylated, plays a role in filament reorganization. Involved in the delivery of mutated CFTR to the plasma membrane. Together with KRT8, is involved in interleukin-6 (IL-6)-mediated barrier protection. [UniProt]
Research Area	Controls and Markers antibody; Signaling Transduction antibody
Calculated Mw	48 kDa
PTM	Phosphorylation at Ser-34 increases during mitosis. Hyperphosphorylated at Ser-53 in diseased cirrhosis liver. Phosphorylation increases by IL-6. Proteolytically cleaved by caspases during epithelial cell apoptosis. Cleavage occurs at Asp-238 by either caspase-3, caspase-6 or caspase-7. O-GlcNAcylation increases solubility, and decreases stability by inducing proteasomal degradation.
Cellular Localization	Cytoplasm > perinuclear region

Images



ARG54051 anti-Cytokeratin 18 antibody WB image

Western blot: 20 µg of A549, HeLa and MCF7 cell lysates stained with ARG54051 anti-Cytokeratin 18 antibody at 1:2000 dilution.



ARG54051 anti-Cytokeratin 18 antibody ICC/IF image

Immunofluorescence: HeLa cells fixed by anhydrous methanol for 2 hours at -20°C and stained with ARG54051 anti-Cytokeratin 18 antibody at 1:800 dilution.