

## ARG54072 anti-SAFB1 antibody

Package: 100 µl  
Store at: -20°C

### Summary

Product Description	Mouse Monoclonal antibody recognizes SAFB-1
Tested Reactivity	Hu
Tested Application	ICC/IF, IP, WB
Host	Mouse
Clonality	Monoclonal
Isotype	IgG1
Target Name	SAFB1
Species	Human
Immunogen	Purified recombinant human SAFB1 protein fragments expressed in E.coli.
Conjugation	Un-conjugated
Alternate Names	HET; HSP27 estrogen response element-TATA box-binding protein; HSP27 ERE-TATA-binding protein; SAFB1; SAF-B; SAF-B1; Scaffold attachment factor B1; HAP

### Application Instructions

Application table	Application	Dilution
	ICC/IF	1:200
	IP	Assay-dependent
	WB	1:1000
Application Note	* The dilutions indicate recommended starting dilutions and the optimal dilutions or concentrations should be determined by the scientist.	
Observed Size	130 kDa	

### Properties

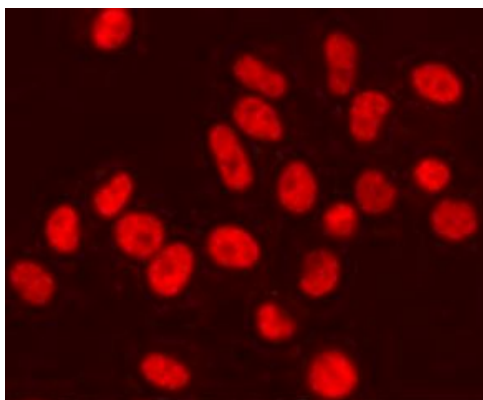
Form	Liquid
Purification	Affinity purified
Buffer	0.1M Tris-Glycine (pH 7.4), 150 mM NaCl, 0.2% Sodium azide and 50% Glycerol
Preservative	0.2% Sodium azide
Stabilizer	50% Glycerol
Concentration	1 mg/ml
Storage instruction	For continuous use, store undiluted antibody at 2-8°C for up to a week. For long-term storage, aliquot and store at -20°C. Storage in frost free freezers is not recommended. Avoid repeated freeze/thaw cycles. Suggest spin the vial prior to opening. The antibody solution should be gently mixed before use.

Note For laboratory research only, not for drug, diagnostic or other use.

## Bioinformation

Database links	<a href="#">GeneID: 6294 Human</a> <a href="#">Swiss-port # Q15424 Human</a>
Gene Symbol	SAFB
Gene Full Name	scaffold attachment factor B
Background	Binds to scaffold/matrix attachment region (S/MAR) DNA and forms a molecular assembly point to allow the formation of a 'transcriptosomal' complex (consisting of SR proteins and RNA polymerase II) coupling transcription and RNA processing By similarity. Can function as an estrogen receptor corepressor and can also bind to the HSP27 promoter and decrease its transcription. When associated with RBMX, binds to and stimulates transcription from the SREBF1 promoter By similarity. Can inhibit cell proliferation.
Function	Binds to scaffold/matrix attachment region (S/MAR) DNA and forms a molecular assembly point to allow the formation of a 'transcriptosomal' complex (consisting of SR proteins and RNA polymerase II) coupling transcription and RNA processing (By similarity). Can function as an estrogen receptor corepressor and can also bind to the HSP27 promoter and decrease its transcription. When associated with RBMX, binds to and stimulates transcription from the SREBF1 promoter (By similarity). Can inhibit cell proliferation. [UniProt]
Research Area	Gene Regulation antibody
Calculated Mw	103 kDa
PTM	Sumoylated by PIAS1 with SUMO1 and SUMO2/3, desumoylated by SENP1. Sumoylation is required for transcriptional repressor activity.
Cellular Localization	Nucleus

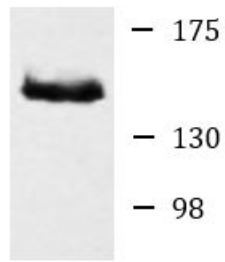
## Images



ARG54072 anti-SAFB1 antibody ICC/IF image

Immunofluorescence: HeLa cells fixed with 4% Paraformaldehyde and stained with ARG54072 anti-SAFB1 antibody at 1:200 dilution.

ARG54072 anti-SAFB1 antibody WB image



Western blot: ZR75-1 cell lysate stained with ARG54072 anti-SAFB1 antibody at 1:4000 dilution.

ZR75-1